




# Earliest-Arrival Route: A Global Optimized Communication for Networked Control Systems

M. Sundar Rajan<sup>1</sup> (✉) , J. R. Arunkumar<sup>2</sup>, R. Anusuya<sup>2</sup>, and Abraham Mesfin<sup>1</sup>

<sup>1</sup> Faculty of Electrical and Computer Engineering, Arbaminch University, Arba Minch, Ethiopia  
sundar.rajana@amu.edu.et

<sup>2</sup> Faculty of Computing and Software Engineering, Arbaminch University, Arba Minch, Ethiopia

**Abstract.** As per the present switched system theorem, data package-drop ratio decides the strength of NCSs. Through the focal point principle to offer small data package-drop ratio for dispersed NCS under parameter transmission environment, the communication improvement issue is described from universal transmission aspect. Initially, system stimulated break is illustrated function associated with time can be calculated using auto-regressive-moving-average (ARMA) pattern, and the upcoming break is forecasted by the obtained break samples. Subsequently, the widespread referred shortest route of time dependent network(SPTDN) algorithm is described and enhanced by means of introducing waiting-time previous to data packages are dispatched to subsequent unit in a route, in order to get quickly coming time than SPTDN. Subsequently, the concept of earliest-arrival time (EAT) is suggested to calculate the excellence of transmission route, the connected EAT algorithm is intended to look for upcoming EAT and the equivalent route since universal system vigorously. Advantage from the active EAT route, data packages reach at target as early as feasible, it reduces data package-drop ratio. Therefore, EAT route make sure the steadiness of shared NCSs from the opinion of world-wide system. At last, the experiment demonstrates the strength and efficiency of the suggested method.

**Keywords:** Transmission optimization · Forecasting system-stimulated break pattern · Shortest route system · Networked control system

## 1 Introduction

Conventional monitor systems are varying from NCS comprises of detecting devices, regulators, and actuators inside a system, consequently, few new procedure constantly happens in the practical system atmosphere. The major issues faced with NCSs are system- stimulated breaks, data package losses and data package disorders. In recent years, many of peoples who is doing research in this field have determined their concentration on removing these breaks, even performing a particular quantity of achievement. Numerous researchers have handled with the agreement issue theoretically by analyzing NCS arrangement [1], The feedback regulators for dynamic system [2], and creating

hypothetical concepts in several agent networks along transmission breaks [3]. Additionally, to these theoretical searching of NCS features, real life analysis were performed in the efficiency of NCS usages in a choice of areas, as like traffic handling [4], mobile detecting device systems [5], unmanned flights and distant manufacturing company monitor [6–8]. Safety issues inbuilt to NCSs have also been analyzed [9]. Modern innovations in NCS study comprises the execution of a direct related-dependent NCS [10] and the expansion of a computerized NCS laboratory, which permits consumers to execute tests distantly, attain pictorial outputs, and scrutinize the testing procedure through the internet [11]. Almost tests are determined on NCSs features, specific disturbs the support capacity of system to NCSs. added by [12], a converted system pattern of NCSs with fixed break was projected. Then both break and confusion issue is transformed into data package-loss issue by placing break edge, and the higher value of data package-drop ratio was specified. Because of the threshold, data packages with more break than threshold will be reduced. It indicates the more greater-break data packages comes into sight in a particular period, the greater the data package-drop ratio turn out to be.

For shared NCSs, numerous routes from regulator to plant may present. Various connects among units present various break feature. With the objective to minimize a dynamic route with reduced data package-drop ratio in time-dependent system, a forecasting system-stimulated break pattern is necessary. In recent times, few comparative researches have been suggested [13] determines pattern through ARMA pattern depends on information concept and except the high computation price creates itself improper to real-time applications. In addition to [14], which suggests a forecasting pattern using different algorithms and the impartiality grey pattern is suggested in [15], but relatively large errors become visible progress to the samples swiftly and extensively. Therefore, ARMA pattern is accepted in this article due to the remaining of handiness and precision.

By ARMA pattern, the present intervals are patterned, then the particular-step ahead breaks are forecasted to compute the improved route. Thus, the key objective of this article is dispatch system components online with the time-varying interval, such that a dynamic low data package-drop ratio route is preserved for signal transmission among regulator and process.

## 2 System Description

### 2.1 Forecasting Network Break Pattern

Conversely, theoretical work on NCSs has turn out to be increasingly widespread, there is no satisfying pattern for unfolding system breaks. In engineering, the system stimulated interval among two units at interval  $k$  is forever measured the part of the Round-Trip-Time (RTT), where it is indicated by  $X_k$ . A nonstop succession of breaks are composed through the sample set  $\{X_k\}$ , for  $k= 1, 2, 3$ , by each  $X_k$  denotes the time-correlation form of a break. The system break can be explained as time sequence. Thus, to get hold of the break sequence by approving an ARMA pattern.

### 2.2 Networked Control System Pattern

Assume a widespread constant state-space equation as below,

$$\dot{x}(t) = A_p x(t) + B_p u(t)$$

$x(t) \in \mathbb{R}^{n \times 1}$  and  $u(t) \in \mathbb{R}^{m \times 1}$  are state of the system and monitor sign a correspondingly,  $A_p$  is state matrix and  $B_p$  is monitor matrix of the continuous network (3),  $A_p \in \mathbb{R}^{n \times n}$ ,  $B_p \in \mathbb{R}^{n \times m}$ ,  $n$  and  $m \in \mathbb{N}$ . Subsequently a traditional system below is utilized to portray NCSs [12].

$$\begin{aligned} S^{(0)} : x(k + 1) &= Ax(k) + B_0u(k) + B_1u(k - 1) \\ S^{(1)} : x(k + 1) &= Ax(k) + B_2u(k - d) \\ S^{(2)} : x(k + 1) &= Ax(k) + B_0u(k) + B_1u(k - d), \end{aligned}$$

$h$ - sampling time interval,  $d$  - amount of the successive missing data packages at present time,  $\tau$  is system stimulated break and  $A = e^{Ap^h}$ ,

$$\begin{aligned} B_0 &= \int_0^{h-\tau} .e^{Ap^s} ds B_p \\ B_1 &= \int_{h-\tau}^h .e^{Ap^s} ds B_p \\ B_2 &= \int_0^h .e^{Ap^s} ds B_p \end{aligned}$$

Arrival data packages with break greater than  $\tau$  will be dropped by system.

### 3 Earliest Arrival Route of Time Dependent Network

#### 3.1 Shortest Route of TDN

Even if broadly referred SPTDN algorithm [16] already present for resolving the smallest route issue in this network it would not be exact precise whereas the data spreading on a local area network or web.

Figure 1 as per the TDN pattern suggested in [16], once data packages land at a unit  $v_r$ , they are distributed to next unit  $v_{r+1}$  instantly, the association is portrayed in (11). It

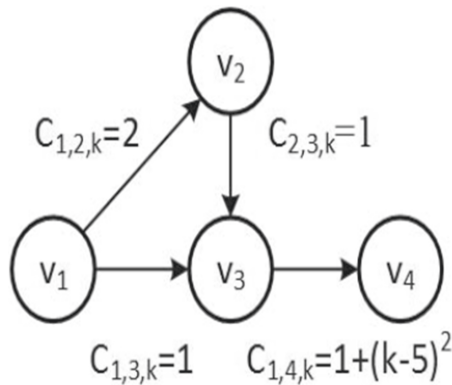


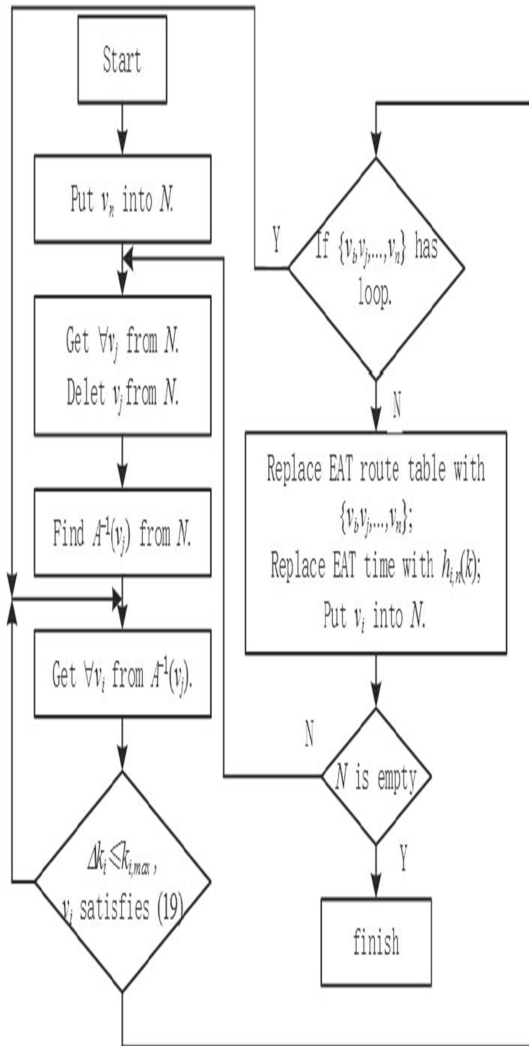
Fig. 1. Counter example of SPTDN

indicates system stimulated break only happens on the data broadcast procedure among units. It is the circumstance creates Theorem 2 correct. But, if  $v_i$  holds data packages for a particular break  $k_i$ , it may offer a brief time cost when compare to the smallest specified by 2.

**3.2 Algorithm of Look for EAT Route**

Stage1: Place the target unit  $v_n$  in lineN;

Stage 2: Obtain one component from queue N and remove it from N. Indicate it as  $v_j$ .



**Fig. 2.** Flow chart

Stage 3: Obtain  $A^{-1}(v_j)$ ;

Stage 4: Get component from  $A^{-1}(v_j)$  by step and label the present value by  $v_i$ ;

Stage 5: Compute the minimum value from  $v_j$  to  $v_n$  as per the SPTDN algorithm, and label the output as  $\Delta t_{i,max}$ . Let  $\Delta k_i \leq t_{i,max}$ ,  $\Delta k_i$  is time of delay.

Stage 6: When  $v_i$  fulfils the situation, test the path  $\{v_i, v_j, \dots, v_n\}$  whether has loop route, whose subroute  $\{v_j, \dots, v_n\}$  has obtained in path. If not, revive path table with path  $\{v_i, v_j, \dots, v_n\}$  and its coming time  $h_{i,n}(k)$ , then put  $v_j$  in N and move to stage 2; if not fall the present component  $v_i$  and move to stage 4. Until N is vacant, the path performs the output of the suggested algorithm. The flow chart is shown in Fig. 2.

### 4 Experiments

This part illustrates a test executed out to test the efficiency of the suggested EAT method. The arrangement is shown in Fig. 3. PC-104 regulator serves regulator and the process pattern is compiled to C-language executes in PC-104 Plant.  $v_1$  is higher computer of PC-104 regulator,  $v_2$  is higher computer of PC-104 plant and  $v_3$  is relay computer in the system. Feedback through  $v_3$  to  $v_1$ .

Where the transmission of system depends on UDP. Plant pattern is two-axle grinder, the matching switched method is created in [12], and the information are presented as follows. Matrices of the model (4) are.

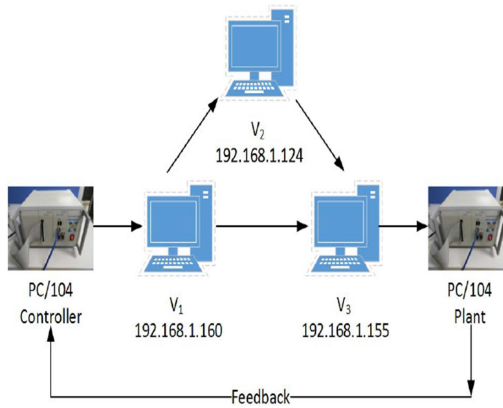


Fig. 3. Experiment topology

$$A = \begin{bmatrix} 10.0461 & 0 & 0 \\ 0 & 0.1624 & 0 & 0 \\ 0 & 0 & 1 & 0.0466 \\ 0 & 0 & 0 & 0.1676 \end{bmatrix}$$

$$B_0 = \begin{bmatrix} 0.7893 & 19.8711 & 0 & 0 \\ 0 & 0 & 0.7965 & 20.1075 \end{bmatrix}$$

$$B_1 = \begin{bmatrix} 0.7394 & 3.8752 & 0 & 0 \\ & 0 & 0 & 0.7493 & 3.9907 \end{bmatrix}$$

$$B_2 = \begin{bmatrix} 1.5287 & 23.7463 & 0 & 0 \\ & 0 & 0 & 1.5458 & 24.0982 \end{bmatrix}$$

sampling period  $T = 100$  ms, system stimulated break  $\tau = 0.3355T$ , and the factors are given following:

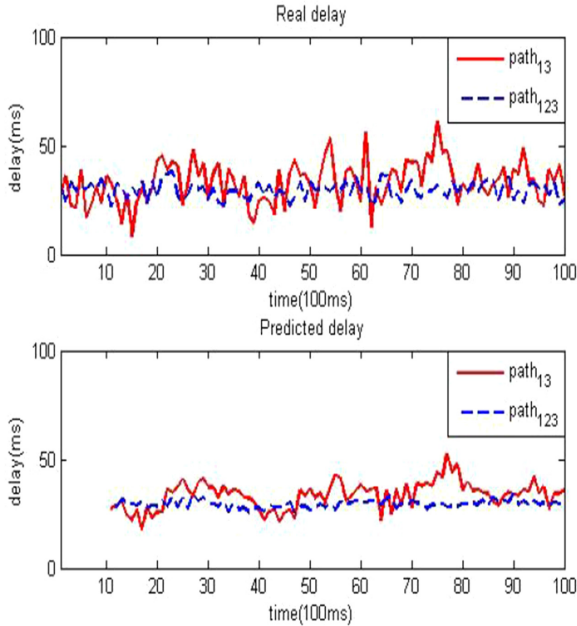
$$\varepsilon_0 = \varepsilon_3 = \varepsilon_4 = 1.15,$$

$$\varepsilon_1 = \varepsilon_2 = 0.95,$$

$\mu = 1.05$ ,  $\lambda = 1.05$ , and the gain matrix of regulator is  $K$ , where

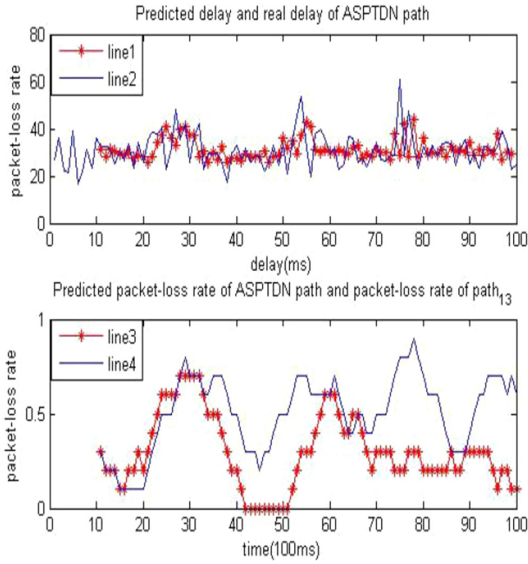
$$K = \begin{bmatrix} -0.2038 & -0.011200 & & & \\ & & & 0 & -0.2107 & -0.0118 \end{bmatrix}$$

Their real breaks and forecasted breaks produced by pattern (2). The forecasted breaks in Fig. 4 fundamentally response of the movement. It involves system stimulated break can be patterned and forecasted by ARMA pattern.



**Fig. 4.** Comparison of route feature

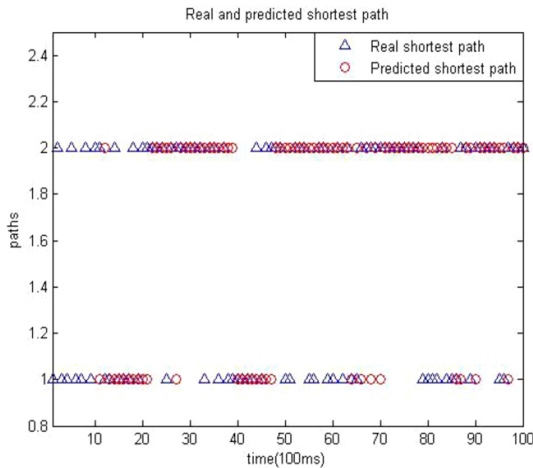
In Fig. 5, line1 displaying forecasted breaks of earliest route, line2 displaying true breaks.



**Fig. 5.** Break and data package-loss rate

Line3 is the real data package-drop ratio of EAT route and line4 denotes the real data package-drop ratio of route<sub>13</sub>.

The Fig. 6 shows the broadcast route of each time, value 1 indicates route<sub>13</sub>, 2 indicates route<sub>123</sub>. This result displays the forecasted EAT route comprises with the actual EAT route at the most of time.



**Fig. 6.** Real and forecasted EAT route

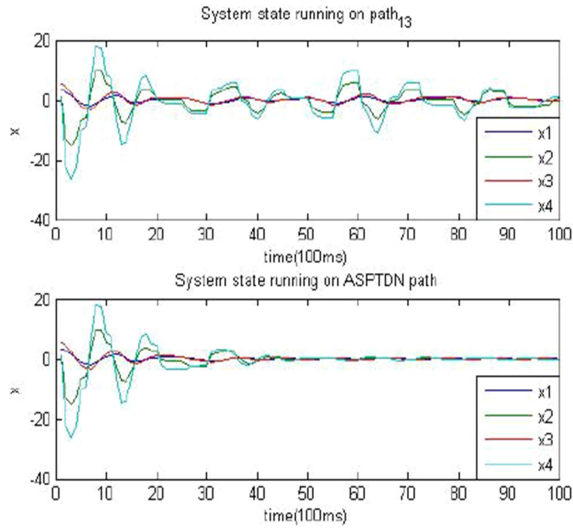


Fig. 7. System state

Figure 7 illustrates state of the system. If the monitor signal is broadcasted via route13, system can't stay stable because data package-drop ratio stimulated by route13 transforms to  $\alpha *$ . When EAT route is adopted, travelling the signal through route13 and route123 alternatively as per the proposed system to the preserve the value of  $\alpha$  should be less than  $\alpha *$ . Figure 7, route123 is to distribute the value predominantly excluding 2 time period from 12th to 21st sampling duration, remaining starts at the 40th and ends at 46th sampling duration complete stable state. Figure 7 reveals that EAT route keeps arrangement basically constant from the 45th sampling duration because of its communication, it offers low data package-drop ratio than  $\alpha *$ . This shows in the demonstration the strength of EAT route for reducing data package-drop ratio and keep up system steady.

## 5 Conclusion

This study represents two ground-breaking ideas. At first, from the particularized vision, ARMA pattern is utilized to portray the system-stimulated break. After recognizing the factors, the upcoming breaks are forecasted for specific action. This linear pattern reproduces the tendency of system-stimulated break happens on each link in system, offers forecasted breaks with the given algorithm. Subsequently, proposed system is suggested for the active route from universal system, it makes sure data packages get there as early as possible. Because of the association of data package-drop ratio and steadiness of NCSs, data packages pass through along with EAT route in order to reduce data package-drop ratio, and then assure the steadiness of NCSs. This article is dedicated to suggest an optimized monitor of NCSs. Even though the analysis has specific accomplishment, several issues are faced in the while doing the experiment. Our future work as following parts: 1) to process the pattern of system-stimulated break and enhance

its precision; 2) to transferring data streams by means of parallel multiple-routes; 3) to build a NCS with multiple units and on an inter-city scale.

## References

1. Wang, Z., Liu, G.-P.: Design and implement of multi-agent transmission platform based on system break forecast. In: Proceedings of the 33rd Chinese Control Conference (2014)
2. Gao, C., Zhang, X., Yue, Z., Wei, D.: An accelerated physarum solver for network optimization. *IEEE Trans. Cybern.* (2020)
3. Tang, B., Wang, J., Zhang, Y.: A break-distribution approach to stabilization of networked control systems. *IEEE Trans. Control Network Syst.* **2**(4), (2015)
4. Caruntu, C.F.: A less conservative condition for flexible control lyapunov functions used in networked forecastive control systems. In: 20th International Carrouteian Control Conference (ICCC) (2019)
5. Liu, Z.-Q., Wang, Y.-L., Chen, P., Oi, A.-C., Yang, X.-F.: Forecastive control-based consensus of networked unmanned surface vehicle formation systems. In: IEEE 27th International Symposium on Industrial Electronics (ISIE) (2018)
6. Caruntu, C.F., Lazar, C., Vargas, A.N.: Chance-constrained pattern forecastive monitor for vehicle drive trains in a cyber-physical framework. *Int. Conf. Eng. Technol. Innovation (ICE/ITMC)* (2017)
7. Ying, L., Chen, Q., Zhu, H.: Robust pattern forecastive monitor for a class of systemed monitor systems with time-varying breaks. *IEEE Workshop Electr. Comput. Appl.* (2014)
8. Rajan, M.S., Mesfin, A., Sando, S.: An effective and active bandwidth distribution in networked control system. *Int. J. Eng. Adv. Technol.* (2020)
9. Henrik, S., Saurabh, A., Karl, H.J.: Cyberphysical security in networked control systems. *IEEE Control Syst. Magazine* **19**(1), 20–23 (2015)
10. Lai, C.L., Pau-lo, H.: Design the remote control system with the time-delay estimator and the adaptive smith predictor. *IEEE Trans. Control Industr. Inform.* **6**(1), 73–80 (2010)
11. Hu, W.S., Liu, G.P., David, R., Qiao, Y.L.: Design and implementation of web-based control laboratory for test rigs in geographically diverse locations. *IEEE Trans. Control Industr.* **55**(6), 2343–2354 (2008)
12. Zhang, W.A., Yu, L., Feng, G.: Optimal linear estimation for networked systems with communication constraint. *Automatica* **47**(9), 1992–2000 (2011)
13. Peter, X.L., Meng, Q.H.M., Gu, J.: Internet roundtrip delay prediction using the maximum entropy principle. *J. Commun. Netw.* **5**(1), 65–72 (2003)
14. Sun, C., Young, J.K., Simon, B., Dimitri, M.: Prediction of weather-induced airline delays based on machine learning algorithms. In: Digital Avionics Systems Conference, pp. 1–6, 25–29 September 2016
15. Tu, X., Yang, S., Fei, M.R.: Internet time-delay prediction based on unbiased grey model. In: World Congress on Intelligent Control and Automation, pp. 860–864 (2011)
16. Tan, G.Z., Gao, W.: Shortest path algorithm in timie-dependent networks. *Chinese J. comput.* **25**(2), 165–172 (2002)