



# Smart Drowsiness Detection System with Microcontroller Integration

Satyarth Motupalli<sup>1</sup>, J. V. R. Ravindra<sup>2</sup>, G. A. E. Satish Kumar<sup>2</sup>(✉),  
R. Phani Vidhyadhar<sup>2</sup>, Ramavathar Yadav Kanneboina<sup>2</sup>, Varun Kumar Reddy<sup>2</sup>,  
and Siddarth Tammineni<sup>2</sup>

<sup>1</sup> Department of ECE, Chaitanya Bharathi Institute of Technology, Hyderabad, Telangana, India

<sup>2</sup> Department of ECE, Vardhaman College of Engineering, Hyderabad, Telangana, India  
jayanthi@ieee.org, {gaesathi, rphaniv}@vardhaman.org

**Abstract.** An embedded system is designed to address the issue of drowsy driving by using a microcontroller and a pulse sensor. This system combines multiple sensors, including the pulse sensor, with a microcontroller to monitor a driver's vital signs and behaviour. The microcontroller acts as the central processing unit, collecting data from the sensors, analyzing it, and making informed decisions. Specifically, the pulse sensor measures heart rate and heart rate variability, which can provide insights into a driver's physiological state, especially when drowsiness leads to changes in these parameters. The compact size and low power consumption of this embedded system make it suitable for integration into various vehicles, from personal cars to commercial fleets. In conclusion, this abstract emphasizes the potential of integrating such a system into vehicles to enhance road safety by detecting drowsy drivers and reducing accidents associated with drowsy driving.

In essence, this technology embodies the spirit of looking out for one another. It transforms every journey into a secure experience where drivers and passengers can travel with confidence, knowing they are shielded by a caring, understanding companion. It's not just about avoiding accidents; it's about fostering a culture of safety, where we all contribute to making our roads a better place for everyone.

**Keywords:** Pulse Sensor · Heart Rate · Microcontroller · Driver Safety · Real-time Monitoring · Alert System · Smart Detection · Safety Technology · Visual and Auditory Alerts

## 1 Introduction

The prevalence of drowsy driving as a leading cause of road accidents underscores the critical need for effective driver monitoring systems [1]. This paper introduces an innovative embedded system designed to detect drowsy drivers using a microcontroller and a pulse sensor, intending to contribute to road safety [2].

Our proposed system leverages the capabilities of a microcontroller, serving as the central processing unit, to collect and analyze data from multiple sensors. Key among these sensors is the pulse sensor, typically positioned on the driver's fingertip or car

steering [3]. This sensor measures heart rate and heart rate variability, parameters known to exhibit significant changes during drowsiness. By continuously monitoring these physiological indicators, our system can accurately identify irregularities associated with drowsy driving.

The compact size and low power consumption of our embedded system make it adaptable for integration into a wide range of vehicles, [4] from personal cars to commercial fleets. This paper presents a comprehensive exploration of our system's design, operation, and potential impact on enhancing road safety by detecting and alerting drowsy drivers, ultimately reducing accidents caused by this perilous behavior.

As we delve into the details of this Smart Drowsiness Detection System, you'll discover the fascinating technology behind it, the integration of sensors, and how the microcontroller plays a crucial role in making split-second decisions to keep you safe and alert. So, let's embark on this journey together and explore the cutting-edge features that make this system a valuable companion in our daily lives.

## 2 Objectives

- The primary aim of this project is to greatly improve the safety and security of drivers, enhancing their overall well-being and protection while on the road.
- The system will alert the drivers using a buzzer and alarm system.
- To design a system that is used to measure the pulse of a driver using a pulse sensor and the frequency of drowsy drivers.

## 3 Literature Review

Seok-Woo Jang and Byeongtae Ahn [5], According to their research. By combining image recognition and IoT, their system not only identifies signs of driver fatigue but also proactively prevents potential accidents. It utilizes real-time image analysis to monitor driver behavior and employs IoT connectivity to interact with vehicle systems, such as steering assistance or alerting mechanisms. This comprehensive approach demonstrates a promising path towards significantly reducing drowsy driving-related accidents, thereby enhancing road safety and overall driver well-being in our increasingly connected automotive landscape.

Rateb Jabbar and his team [6] introduce a pioneering approach to tackling the issue of driver drowsiness using Convolutional Neural Networks (CNNs) within Android applications. Their study is a noteworthy contribution, as it effectively harnesses CNN techniques to analyze facial expressions and continuously monitor driver attentiveness in real time. This innovation holds immense potential for bolstering road safety by preventing accidents that stem from drowsy driving. Nevertheless, their work undeniably marks a significant stride toward deploying advanced AI technologies to address a critical concern in the realm of transportation safety.

Pawan Bharadwaj et al.'s [7] work builds upon these foundations by proposing an integrated system that combines drowsiness detection with accident-avoidance measures. While promising, further real-world testing and validation are needed to ascertain

its practicality and efficacy. Nevertheless, their search represents a commendable step toward enhancing road safety by proactively tackling the issue of driver drowsiness.

Bhargava Reddy et al. [8] address a pressing concern in automotive safety. It employs model compression techniques in deep neural networks, enabling real-time drowsiness de-detection suitable for embedded systems. It builds upon prior studies exploring drowsiness detection and model compression, demonstrating an innovative fusion of these concepts. Though promising, practical implementation and validation in diverse driving conditions are essential for its efficiency.

## 4 Proposed Systems and Methodology

The proposed system aims to enhance road safety by developing a drowsy driver detection system using a pulse sensor and an STM32 microcontroller. The system's methodology involves continuous monitoring of the driver's pulse rate using the pulse sensor, which is strategically placed within the vehicle [9]. The STM32 microcontroller processes this real-time data and analyzes it to detect irregularities or significant drops in the driver's pulse rate, which could indicate drowsiness. Upon detection of potential drowsiness, the system activates various alert mechanisms, such as audio alarms or seat vibrations, to alert the driver.

### A. Architectural Diagram

The architecture of an embedded system for drowsy driver detection integrates a Pulse Sensor and an STM32 microcontroller. The Pulse Sensor captures the driver's heart rate by shining light through the skin and measuring blood flow fluctuations microcontroller processes this data in real time (Fig. 1).

It employs algorithms to analyze heart rate patterns and detect signs of drowsiness or fatigue [12]. When drowsiness is detected, the system triggers alerts, such as audible alarms or seat vibrations, to awaken the driver. Additionally, it records data for post-incident analysis and preventive measures. This architecture offers a proactive approach to enhancing road safety by addressing the critical issue of drowsiness drivers (Fig. 2).

The system monitors the driver's heart rate using a pulse sensor, taking photos of this data regularly. These photos are then sent to the microcontroller, the main part of the system. The microcontroller translates these photos into understandable digital information using a part called the ADC.

This algorithm examines the heart rate data for specific changes. For instance, if the heart rate suddenly drops or becomes irregular, the algorithm recognizes these changes as potential signs of drowsiness. These patterns usually indicate that a person is becoming less alert, suggesting they might be getting drowsy or even falling asleep while driving. When the system spots these signs, it sends an alert to the driver, telling them to take a break and avoid driving when they're feeling drowsy.

### B. Work Flow

The workflow of the drowsy driver detection project using a Pulse Sensor and STM32 microcontroller follows a structured flowchart-like process. It commences with the Pulse Sensor continuously monitoring the driver's heart rate, transmitting this real-time data

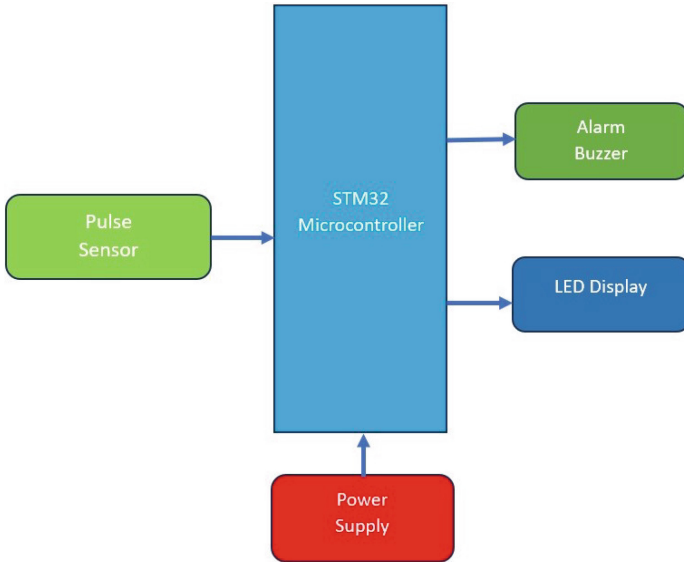


Fig. 1. Block Diagram

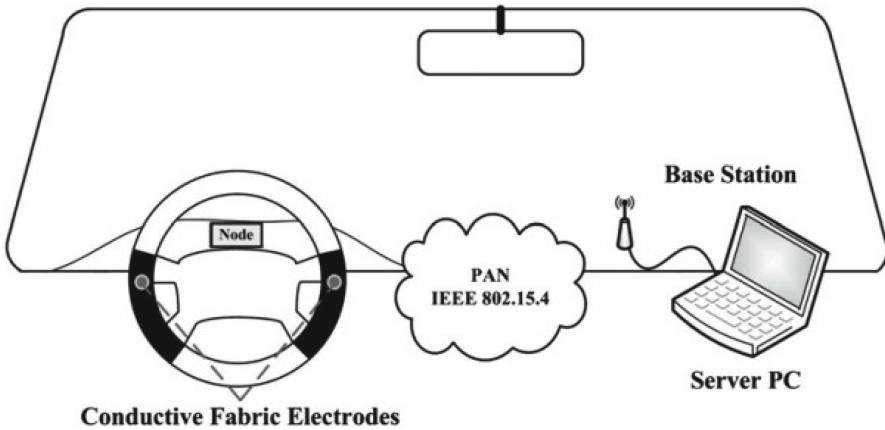


Fig. 2. Connection between Control Signal to Warning System

to the STM32 microcontroller, the system’s core. Within the microcontroller, complex algorithms analyze heart rate patterns, swiftly identifying signs of drowsiness.

The “Data Processing” stage processes the heart rate data, extracting crucial information such as baseline heart rate and patterns indicative of drowsiness. The pivotal “Drowsy Driver Detection” decision point evaluates if the driver is drowsy by comparing real-time heart rate data with predefined thresholds.

Upon detection, the system activates alert mechanisms like audio alarms or seat vibrations to awaken the driver while concurrently logging data for future analysis.

This systematic workflow ensures proactive and efficient drowsy driver detection, significantly enhancing road safety and mitigating potential accidents caused by drowsy driving [13].

Finally, the system interfaces with a “User Interface” to convey information to the driver. This flowchart provides a systematic overview of the steps involved in creating an embedded drowsy driver detection system, emphasizing the importance of hardware-software integration and real-time monitoring for road safety (Fig. 3).

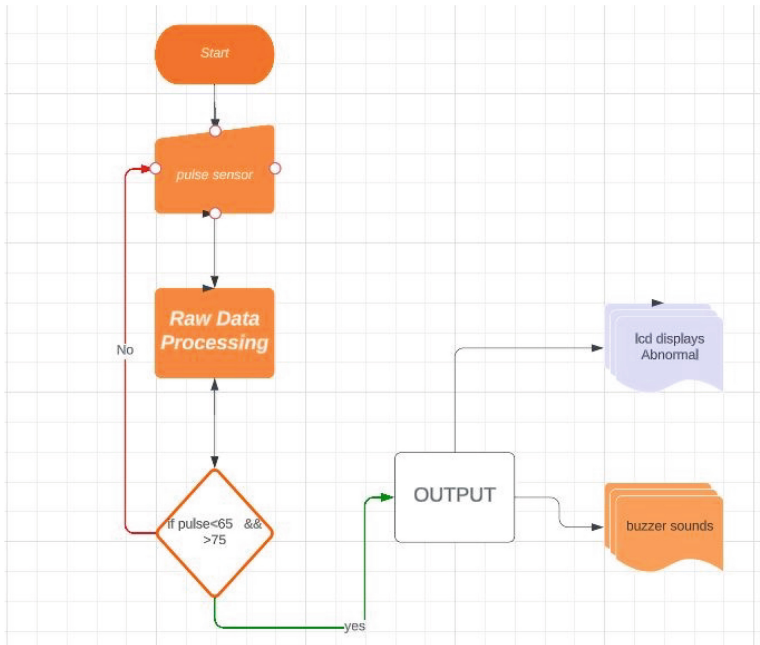
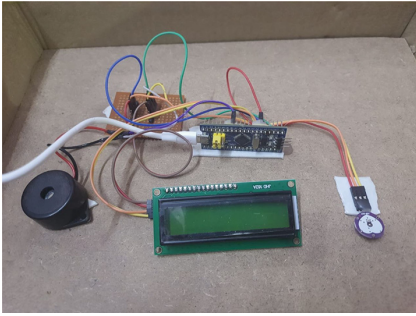


Fig. 3. Flow chart Execution

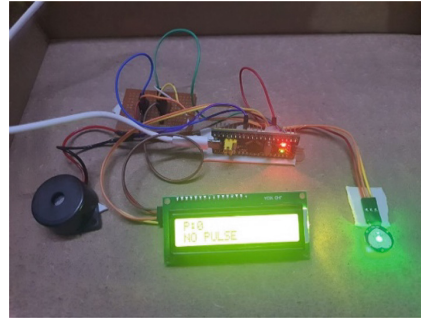
## 5 Results and Discussion

The total equipment setup of the project is shown in the below figure. The results and discussion of the drowsy driver detection project utilizing a Pulse Sensor and STM32 microcontroller are promising. The system effectively detected instances of driver drowsiness during testing scenarios [14]. When drivers exhibited reduced heart rate patterns indicative of drowsy, the alert mechanisms were triggered promptly, and they responded positively to these alerts.

There were some instances where false positives occurred, often due to factors like temporary heart rate fluctuations unrelated to drowsiness. Fine-tuning the algorithms and considering additional physiological data for a more accurate assessment of drowsiness could help mitigate these false alarms [15] (Figs. 4 and 5).



**Fig. 4.** Equipment Setup



**Fig. 5.** Output of a practical model



**Fig. 6.** Practical model in a real-time environment

In the given below Figs. 6, 7 and it show how the prototype will work and how it collects data and gives an alert. When a driver/person driving a vehicle and suddenly feels drowsy the heart rate of the person becomes abnormal and it is detected by the sensors on the steering and gives an alarm or buzzer sound.

## 6 Conclusion and Future Scope

In conclusion, the implementation of an embedded system-based drowsy driver detection system using a pulse sensor and microcontroller offers a promising solution for mitigating the risks associated with driver drowsiness. The integration of a pulse sensor allows for real-time monitoring of the driver's heart rate, providing valuable insights into their physiological state.

In the future, the integration of additional sensors, such as eye-tracking or vehicle-based sensors, to gather a more comprehensive set of data for drowsiness detection. The system can also be enhanced by incorporating machine learning algorithms to improve the accuracy of drowsiness detection.

Furthermore, the system can be extended to include remote monitoring capabilities, allowing for real-time monitoring of multiple drivers and generating alerts to fleet managers or emergency services in case of drowsy driving incidents. The project can also be expanded to include integration with autonomous vehicles, where the system can take control of the vehicle in case of driver drowsiness.

## References

1. Perkins, E., et al.: Challenges of driver drowsiness prediction: the remaining steps to implementation. *IEEE Trans. Intell. Veh.* (2022)
2. Priya Dharshini, R., Binuja, B.: *Driver Drowsiness and Alcohol Detection System Using Arduino* (2020)
3. Gowri, S.M., et al.: Internet of things based accident detection system. In: 2019 Third International Conference on I-SMAC (IoT in Social, Mobile, Analytics and Cloud) (I-SMAC). IEEE (2019)
4. Soares, S., et al.: Analyzing driver drowsiness: from causes to effects. *Sustainability* **12**(5), 1971 (2020)
5. Jang, S.-W., Ahn, B.: Implementation of detection system for drowsy driving prevention using image recognition and IoT. *Sustainability* **12**(7), 3037 (2020)
6. Jabbar, R., et al.: Driver drowsiness detection model using convolutional neural networks techniques for android application. In: 2020 IEEE International Conference on Informatics, IoT, and Enabling Technologies (ICIoT). IEEE (2020)
7. Bharadwaj, P., et al.: Drowsiness Detection and Accident Avoidance System in Vehicles, pp. 79–87 (2019)
8. Reddy, B., et al.: Real-time driver drowsiness detection for an embedded system using model compression of deep neural networks. In: *Proceedings of the IEEE Conference on Computer Vision and Pattern Recognition Workshops* (2017)
9. Mollicone, D., et al.: Predicting performance and safety based on driver fatigue. *Accid. Anal. Prevent.* **126**, 142–145 (2019)
10. Ed-Doughmi, Y., Idrissi, N., Hbali, Y.: Real-time system for driver fatigue detection based on a recurrent neuronal network. *J. Imaging* **6**(3), 8 (2020)
11. Ashfakur Rahman Arju, M., Khan, N.H., Hoque, K.E., Jisan, A.R., Tareque, S.M., Hasan, M.Z.: A framework for detecting driver drowsiness based on eye blinking rate and hand gripping pressure. In: Uddin, M.S., Bansal, J.C. (eds.) *Proceedings of International Joint Conference on Computational Intelligence*. AIS, pp. 289–304. Springer, Singapore (2020). [https://doi.org/10.1007/978-981-13-7564-4\\_26](https://doi.org/10.1007/978-981-13-7564-4_26)
12. Albadawi, Y., Takruri, M., Awad, M.: A review of recent developments in driver drowsiness detection systems. *Sensors* **22**(5), 2069 (2022)
13. Bajaj, J.S., Kumar, N., Kaushal, R.K.: Feasibility study on amalgamation of multiple measures to detect driver drowsiness. *ECS Trans.* **107**(1), 1951 (2022)

14. Bhagyashree, S.R., Sonal Singh, T., Kiran, J., Padmini, L.S.: Vehicle speed warning system and wildlife detection systems to avoid wildlife-vehicle collisions. In: Sridhar, V., Padma, M., Rao, K. (eds.) *Emerging Research in Electronics, Computer Science and Technology*. LNEE, vol. 545, pp. 961–968. Springer, Singapore (2019). [https://doi.org/10.1007/978-981-13-5802-9\\_84](https://doi.org/10.1007/978-981-13-5802-9_84)
15. Singh, D., Pati, B., Panigrahi, C.R., Swagatika, S.: Security issues in IoT and their countermeasures in smart city applications. In: Pati, B., Panigrahi, C., Buyya, R., Li, K.C. (eds.) *Advanced Computing and Intelligent Engineering*. AISC, vol. 1089, pp. 301–313. Springer, Singapore (2020). [https://doi.org/10.1007/978-981-15-1483-8\\_26](https://doi.org/10.1007/978-981-15-1483-8_26)