



# Evaluation of Business English Teaching Mode in the Context of Large Model Sample

Suofei Xie(✉)

Guilin University, Guangxi 541000, China  
tangtangxingqiu@163.com

**Abstract.** Although we can also be an important part of the teaching mode, we can analyze it through a variety of teaching modes, but there are inaccurate operations in the process of vitality analysis, so we should carry out budget analysis of business English in a large number of contexts, and realize the change and evaluation of the education fund mode on the basis of the analysis of juvenile doctors. Through a large number of business and comprehensive judgments in the environment, we can understand and communicate in English, hear English, and realize your future teaching goals. In the process of collating, analyzing and studying business English, educational methods and educational lesson plans are of great significance to its development, so it is necessary to make a comprehensive judgment on it.

**Keyword:** Decision tree method · Technology · Teaching and research · Business English teaching

## 1 Introduction

Because of the rapid development, Business English can improve the overall effect of English, and describe the vocabulary and legal composition of English in depth, and give full play to the overall level of English teaching [1–4].

## 2 Related Concepts

### 2.1 Mathematical Description of Big Data Deep Mining Algorithms

To eliminate the occurrence and influence of the overall situation corresponding to the pathological influence, it is necessary to make a hypothetical analysis of goodwill and put forward the following hypotheses. Hypothesis 1: The teaching mode sample is  $x_i$ , the teaching mode sample set is  $k_i$ , the evaluation index of the teaching research results is  $y_i$ , the business English teaching mode sample judgment function  $F(x_i \triangleq 0)$ . As shown in Eq. (1).

$$F(x_i) = \sum x_i \cup y_i \cdot \xi \quad (1)$$

### 2.2 Choice of Business English Teaching Program

Hypothesis 2: Children without English education.  $I(x_i)$  and the weight coefficient of Grammatical commitment of English.  $w_i$ , then the teaching and research program selection is shown in Eq. (2).

$$I(d_i) = z_i \cdot F(x_i, y_i) \forall \int w_i \propto \xi \tag{2}$$

### 2.3 Processing of Teaching Model Samples

Before analyzing the sample data, we should judge the key points in business English and the different values and data of business transportation, complete the overall integration of data, and differentiate the key contents and key structures in the business field. he sharing of big data in-depth mining algorithms. The teaching and research model sample is a system test mode sample and needs to be standardized. The teaching content should be practical, contemporary and cross-cultural, and pay attention to the combination of theory and practice. At the same time, the selection of teaching materials should also conform to the teaching objectives and students' actual level is shown in Fig. 1.

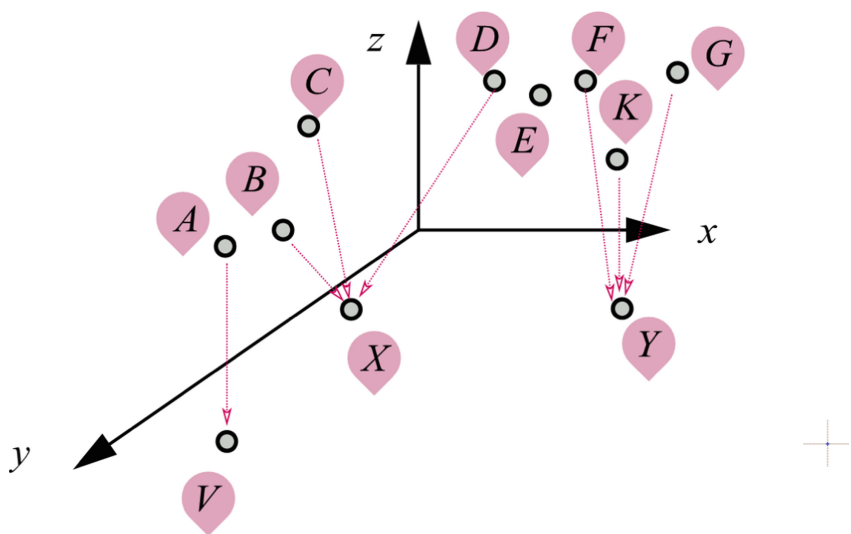


Fig. 1. Results of the selection of teaching mode

The choice of this mode can better analyze business relations, find out the problems of goodwill, and judge the standardization and content of business travel, so the above plays an important role in analysis and research. Supply also has its own shortcomings and defects, so it is necessary to make a more comprehensive judgment on the content of business English.

### 3 Strategies for Teaching and Research

Collect the data you need and collect relevant data through survey questionnaires and interview content. The survey participants are mainly students, teachers, and other learners of Business English. Therefore, in the process of selecting and analyzing Business English models, it is necessary to standardize and unify the data.

Presentation of results: The overall analysis of biological English needs to be carried out in combination with various contents, so it should be binding to some extent, otherwise the results of English will be contrary to reality, so in the analysis process, it is necessary to make a comprehensive analysis of all indicators in commodities. Seriously list the contents in the negotiation.

### 4 Practical Cases of Teaching and Research

#### 4.1 Introduction to Teaching and Research Model Samples

In order to facilitate the teaching of business English, this paper uses 68 teaching and research model samples as research models, and the test time is 8 weeks specific sports. A sample of business English teaching modes is shown in Table 1.

**Table 1.** Relevant parameters of teaching and research

Scope of teaching	Scope of application	Teaching effectiveness	Evaluation results
Open classes	Europe	63.34	63.39
	Asia	63.34	65.14
Specialized courses	Europe	65.57	63.20
	Asia	63.43	63.12
Elective course	Europe	62.57	64.37
	Asia	63.34	63.39

The sample processing process of the teaching mode in Table 1 is shown in Fig. 2.

In the process of data analysis, we can find that the method proposed by some people has good stability in the process of data arrangement and change, but the value of instinctive production method in all data volumes is relatively low, which shows that the data processing effect is not ideal, but the overall average value is ideal, mainly because there are certain errors in the data, which requires in-depth mining., big data deep mining algorithms' calculation speed, accuracy, and rationality are better.

Big data deep mining algorithm.

Statistical analysis method.

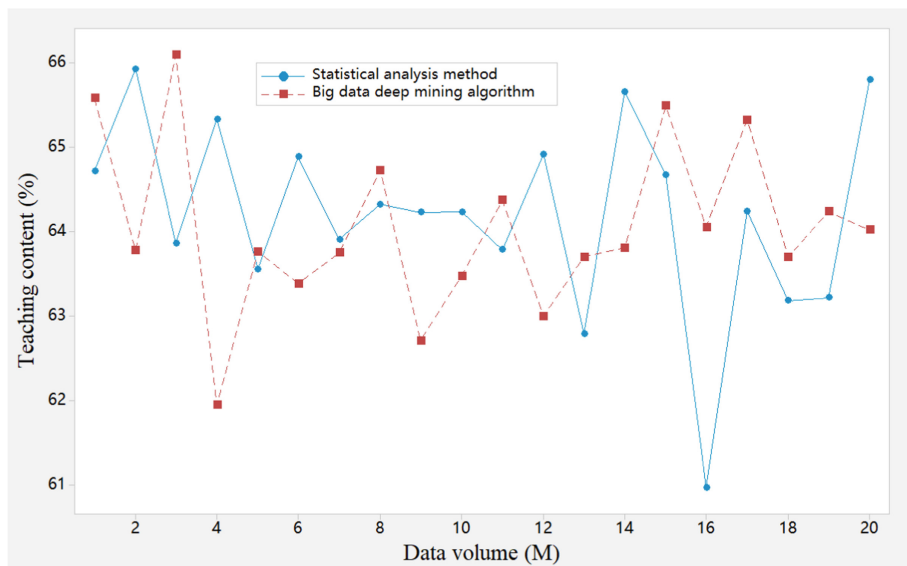


Fig. 2. Processing process of teaching model samples

## 4.2 Teaching and Research

With English as Chinese in English, what are the important components of English?, is also an effective way to reform and give preferential methods to business English. In the process of choosing modes and methods, business English should make a multi-objective analysis of business English according to the existing situation, and at the same time, it should use your comprehensive indicators in business English. as shown in Table 2.

Table 2. Overall status of teaching and research programs

Type	Evaluation rate	Analysis rate
Read	62.91	63.53
Writing	64.66	63.22
Grammar	64.10	64.10
Mean	62.06	64.39
$\chi^2$	3.253	2.216
$P = 0.043$		

### 4.3 Accuracy and Rationality of Business English Teaching Programs

That is, in the design of business English, we should analyze the overall environment, teaching platform and teaching conditions of business English, and make multi-index budget under feasible conditions.were shown in Fig. 3.

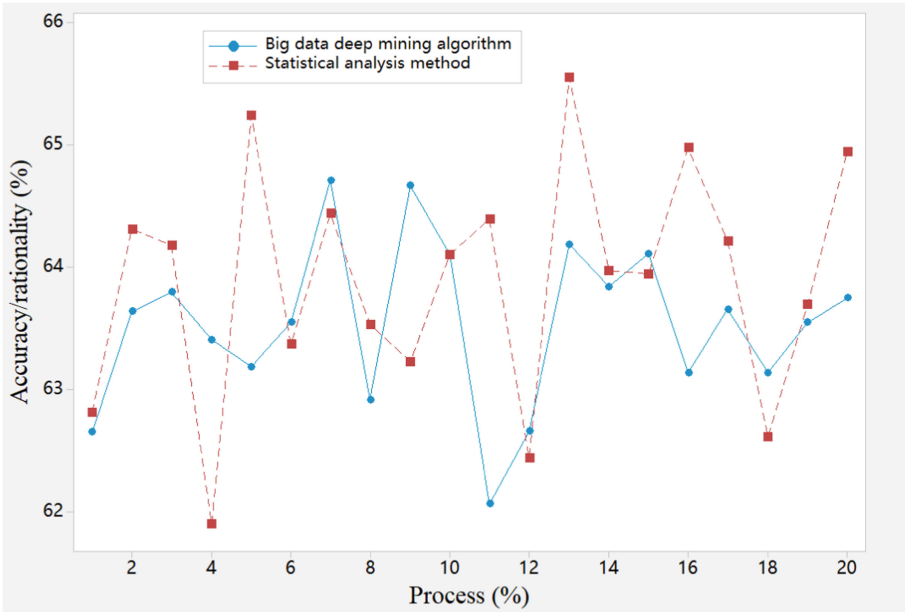


Fig. 3. The accuracy of different algorithms

In the next analysis process, we can find that the method proposed in this paper is relatively stable, especially in the processing process of 4%, 6% and 14%, the original data is 10 points stable, but the previous data has changed greatly, mainly because the original data can not be simplified in data flow processing, and it is easy to have the problem of complex statistical data in the data processing process. Are shown in Table 3.

Table 3. Comparison of shared business English teaching methods by different methods

Algorithm	Precision	Teaching range	Error
Big data deep mining algorithms	92.69	2.29	2.69
Manual teaching evaluation method	83.71	4.86	3.71
<i>P</i>	3.021	3.194	6.022

Because these things and the application of related intelligent methods can make up for the deficiencies of negotiation, and at the same time can promote the development of business. Therefore, it is necessary to make continuous changes in business English in the later period to judge whether goodwill is obvious, and its specific results show that businessmen and people have better spirits. And result Fig. 4 is shown.

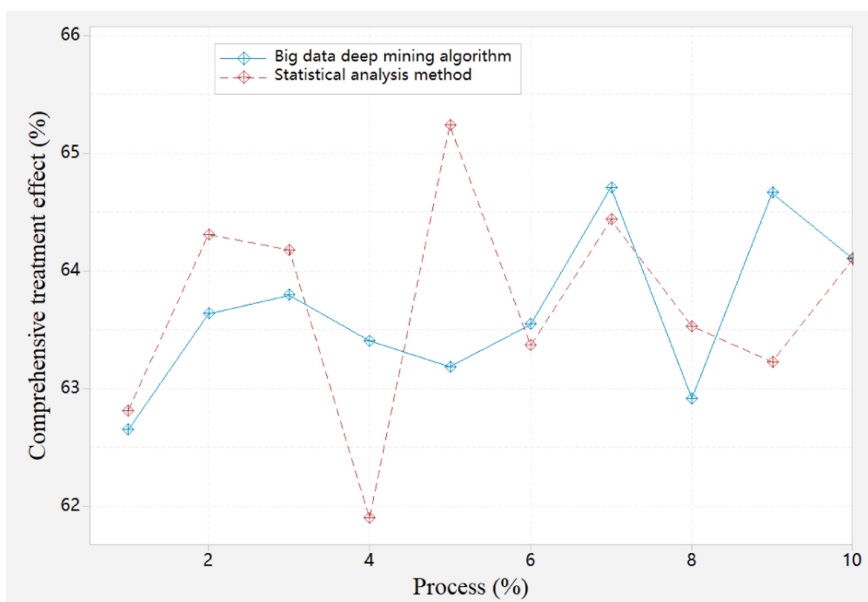


Fig. 4. Comprehensive evaluation results of big data deep mining algorithm

If the collation and processing process of the current research method is honest, the original method has changed greatly between 4 and 6%, and this data and figures also show that the method is theoretical and coordinated when dealing with various complex data, and can tell unified and accurate results.

## 5 Conclusion

The most important content in biological homework English has high value, and its research methods and contents also have certain particularity, so it is necessary to optimize its processing methods and processing modes. This paper puts forward an intelligent algorithm to optimize the teaching mode of business English, realize the overall analysis of the teaching mode of business application, and improve the educational level of business. However, there are some problems in instinct research, that is, there are some shortcomings in the process of data collection and collation, so we will focus on in-depth analysis in the future.

**Acknowledgements.** The 14th Five-Year Plan of National Business Education and Research 2022 project "Research on the Training of New Media Business English Marketing Talents under the Background of Guangxi Digital Service Trade" (No.: SKJYKT-220682).

## References

1. Huang, J.Y.: Main features of business English translation and teaching model optimization based on the logistic model. *Comput. Intell. Neurosci.* (2022)
2. Liu, F., Deng, L.Y.: Design of a multimodal teaching method for business English in a wireless network environment. *Sci. Programm.* (2022)
3. Liu, H.Y., Miao, Y.J., Zhang, S.: Computational technologies for IoT networks application in English classroom teaching. *Secur. Commun. Netw.* (2022)
4. Liu, W.J.: A study on the integration of business English teaching and intercultural communication skills cultivation model based on intelligent algorithm. *Secur. Commun. Netw.* (2022)
5. Zhang, L.: Improved collaborative filtering automatic assessment system for teaching English writing in college. *Adv. Multimedia* (2022)