



# Image Semantic Segmentation for Enhanced Communication

A. Vijaya Lakshmi, Raparathi Rohan<sup>(✉)</sup>, Chirag Karthik,  
and A. Aravind Reddy

Vardhaman College of Engineering, Hyderabad, India  
{vijayalakshmiwardhan,raparthirohan20ece,chiragkarthik20ece,  
bandaruaravindreddy20ece}@vardhaman.org

**Abstract.** Semantic segmentation, a prominent deep-learning technique in computer vision, involves the assignment of specific labels or categories to each pixel within an image. This advanced approach goes beyond traditional image classification by dividing the image into multiple segments and offering precise labeling for individual pixels. This pixel-level categorization facilitates a comprehensive understanding of the image's content, thereby enabling precise object localization. Semantic segmentation finds wide-ranging applications across various domains, including autonomous driving, medical imaging, and satellite imagery analysis. It stands as a fundamental component in the quest to enable machines to perceive and interpret visual data in a manner analogous to human perception. The ability to categorize pixels at such a granular level empowers computer vision systems to attain a high level of scene comprehension, enabling them to discern between different objects and their boundaries. This enhanced understanding of the visual world supports sophisticated tasks such as object detection, instance segmentation, and scene parsing.

**Keywords:** Augmented Reality · Pixel-level Categorization · Scene Comprehension · Computer Vision · semantic segmentation

## 1 Introduction

Semantic segmentation represents a groundbreaking advancement in computer vision, allowing for the precise labeling of individual pixels in an image, thereby facilitating accurate object localization and comprehensive scene comprehension. Its impact extends to various domains, including urban planning, disaster management, and augmented reality, and it significantly contributes to the development of self-driving technology in autonomous vehicles [1].

The continuous evolution of deep learning has propelled the growth of semantic segmentation, with the effectiveness of models like FCNs, U-Net, and DeepLab. Overcoming challenges such as class imbalance and limited data, techniques such as semi-supervised and active learning have been employed. Additionally, domain adaptation ensures the robust performance of semantic segmentation models in diverse environmental conditions [2].

Reliable AI-driven decision-making relies on the estimation of uncertainty. Integrating semantic segmentation with LiDAR, GPS, and 3D data enhances spatial understanding, leading to more informed decisions. In conclusion, semantic segmentation is a transformative technology that pushes the boundaries of accuracy and efficiency in computer vision. Its potential transcends topological imagery, promising innovative applications across a wide range of industries [3]. As technology continues to advance, and interdisciplinary collaboration flourishes, semantic segmentation is set to revolutionize how we interpret and leverage visual data in our dynamic world.

Semantic segmentation, a groundbreaking technique within computer vision, possesses the capacity to fundamentally reshape our comprehension and interpretation of visual data. Through the precise assignment of class labels to each pixel in an image, it transcends conventional image classification, offering a detailed analysis crucial in various real-world applications. Recent advancements in deep learning and neural network architectures have significantly elevated the accuracy and efficiency of semantic segmentation models, opening up possibilities for transformative applications across multiple domains [4].

The motivation to explore and advance state-of-the-art semantic segmentation techniques arises from the escalating demand for precise and meticulous analysis of topological images, notably aerial photographs and satellite imagery. These images contain vital information about Earth's surface and find application in urban planning, environmental monitoring, disaster response, and infrastructure development. Semantic segmentation equips decision-makers with granular insights, facilitating informed decisions concerning sustainable urban growth, efficient resource management, and disaster readiness.

Additionally, semantic segmentation's potential extends beyond topological images. In fields like augmented reality (AR) and virtual reality (VR), it plays a pivotal role in overlaying virtual objects onto real-world scenes, enhancing user experiences and communication. In the automotive industry, semantic segmentation contributes to the development of safe autonomous vehicles, where precise scene understanding is vital for navigation and hazard detection.

The rationale for exploring advanced deep learning architectures, including fully convolutional networks (FCNs), U-Net, and DeepLab, lies in their proven track record across various computer vision tasks, including semantic segmentation. These architectures harness the power of convolutional neural networks to efficiently process spatial information and extract meaningful features, resulting in accurate and precise segmentation [5]. By adapting and fine-tuning these architectures specifically for topological image analysis, we aim to unlock their full potential in this critical domain.

In the digital age, communication has evolved beyond traditional text and voice interactions. Visual content has become an integral part of how we convey information, ideas, and emotions. However, to enable effective communication, it is crucial that the visual content is understood and interpreted accurately [6]. This understanding often depends on the ability to discern objects, regions, and context within images. Image Semantic Segmentation is a fundamental

computer vision task that addresses this need by partitioning an image into semantically meaningful segments, allowing for enhanced communication through visual content [7].

Furthermore, this research will meticulously compare the performance of advanced deep learning architectures, including but not limited to fully convolutional networks (FCNs), U-Net, and DeepLab. The objective is to identify the most efficient and accurate models capable of effectively handling the intricacies presented by vast geospatial datasets and the ever-changing environmental conditions. Addressing the challenges inherent to topological image segmentation is another critical aspect of this research. These challenges encompass class imbalances, limited annotated data availability, and shifts in the data distribution. Innovative strategies such as semi-supervised learning, active learning, and domain adaptation will be explored to bolster the robustness and generalization capabilities of the segmentation models in real-world scenarios [8,9]. To enhance the practicality of these models, uncertainty estimation methods will be integrated to quantify and communicate prediction confidence. Additionally, adversarial defense mechanisms will be implemented to fortify the models against deceptive attacks, especially crucial in applications where data integrity is paramount [10,11].

This project will also delve into the fusion of semantic segmentation with other geospatial data sources like LiDAR point clouds and GPS data, facilitating a more holistic understanding of the spatial environment. Rigorous performance evaluations using metrics such as Intersection over Union (IoU), Mean Average Precision (mAP), and pixel-wise accuracy will be conducted to gauge the models' deployability in real-world geospatial analysis scenarios. Collaboration with domain-specific experts in cartography, geospatial analysis, and remote sensing will ensure the relevance and applicability of the developed semantic segmentation models. Ethical considerations and responsible AI practices will be at the forefront to mitigate potential biases and unforeseen consequences, particularly in domains impacting human lives and the environment [12,13].

## 2 Related Work

In this section we detail about previous methods, models used for unsupervised person re-id. We also present the limitations of these related works. It gives a brief about previous papers related to this project.

In [1] addresses the emerging field of semantic communication for image data, aiming to transmit essential information efficiently. Unlike previous work in natural language processing, it focuses on images, which are rich in semantics and bandwidth-sensitive. The authors introduce a novel approach called RL-ASC (Reinforcement Learning-based Adaptive Semantic Coding) that goes beyond pixel-level encoding. They define semantic concepts for images, propose a semantic encoder, and develop an image reconstruction criterion based on semantic similarity. They also create an RL-based bit allocation model to preserve task-related information effectively. Their Generative Adversarial Nets (GANs)-based

semantic decoder produces visually pleasing and semantically consistent images even under low bit rate conditions, demonstrating noise robustness.

In [2] Semantic communication goes beyond Shannon’s paradigm by prioritizing the transmission of meaningful information from the source, rather than focusing solely on the accuracy of individual symbols or bits. This approach utilizes deep learning to develop theoretical frameworks and system designs, introducing novel performance metrics distinct from traditional error rates. The article concludes by highlighting unresolved questions in the field.

In [3] Indoor RGB-D semantic segmentation faces challenges due to complex environments. This paper introduces a novel approach, the NAM model, which leverages pre-segmentation labels and RGB-D features for improved accuracy. Extensive experiments demonstrate superior performance compared to existing methods on popular neural network architectures.

In [4] the authors introduce an innovative approach to address the challenge of adapting pretrained semantic segmentation models to significantly different target domains in remote sensing data. They propose an unsupervised adversarial domain adaptation network that transforms deep features into 2-D feature curves. These curves are used to minimize the dissimilarity between the source and target domain data, employing conditional generative adversarial networks (cGANs). The method proves effective in enhancing semantic labeling accuracy when applying a pretrained model to the target domain, as demonstrated on the ISPRS 2-D Semantic Labeling dataset. Notably, it performs well even across diverse cities and sensors, outperforming existing domain adaptation techniques in cross-domain semantic segmentation.

In [5] introduces CF-Net, a novel network designed for efficient multiscale semantic information extraction, especially for small-scale objects in images, like aerial photos. CF-Net enhances accuracy through a channel attention refinement block for informative feature selection and a cross fusion block to expand the receptive field of low-level feature maps.

In [6] the realm of remote sensing semantic segmentation, the cost of annotation has been a challenge. To address this, recent research highlights the effectiveness of consistency training in semi-supervised learning. However, existing methods lack consideration for model uncertainty, which leads to semantic ambiguity in outputs. To tackle this, the proposed Certainty-Aware Consistency Training (CACT) strategy comprises two novel components: Certainty-Aware Consistency Correction (CACC) and Class-Balanced-Adaptive Threshold (CBAT). CACC enhances prediction quality by focusing on reliable predictions based on certainty maps. CBAT employs dynamic thresholds to filter out unreliable predictions. Experiments on multiple datasets, including DLRSD, WHDL, and Potsdam, affirm the superior performance of this framework in semi-supervised remote sensing semantic segmentation.

In [7] UNet++ addresses limitations in medical image segmentation models like U-Net and FCN by using an ensemble of U-Nets of varying depths and redesigning skip connections for flexible feature fusion. It outperforms baseline models consistently across different datasets and enhances segmentation of

varying-size objects. Additionally, Mask RCNN++ based on UNet++ design improves instance segmentation, and pruned UNet++ models achieve faster inference with modest performance trade-offs.

In [8] discusses the challenges of automating tree segmentation in forests using satellite and aerial images, focusing on spectral variations, data scarcity, and occlusions. The study conducts extensive experiments with deep learning models, exploring the integration of hand-crafted spectral vegetation indices like NDVI, concluding that combining these indices in a three-channel input alongside advanced semantic segmentation architectures can enhance tree segmentation accuracy compared to high-resolution visible or near-infrared inputs, without added computational complexity.

In [9] the realm of deep learning-based semantic segmentation, the conventional process of feature extraction, often involving subsampling, poses a challenge by sacrificing intricate image details, leading to the loss of small-scale objects and blurry segmentation boundaries. This paper presents a novel approach to address this issue: a semantic edge optimization model. It leverages an end-to-end semantic edge detection network to acquire semantic edge features from the image and subsequently integrates these features with the semantic segmentation ones. This fusion process enhances the preservation of critical edge information within the final segmented image. On benchmark datasets like CamVid and Cityscape, this optimization model demonstrates notable improvements, surpassing the original semantic segmentation model by 1.4% and 1.5% in mean IoU performance.

In [10] the realm of remote sensing, addressing the challenge of ultra-high resolution images, which contain intricate spatial details, required innovative approaches. The study employed fully convolutional deep learning networks for semantic segmentation of such images. A novel segmentation strategy was devised to simplify training without compromising dataset integrity. Experiments conducted on the Potsdam ultra-high resolution remote sensing dataset showcased promising results, with a remarkable 93.7% Mean Intersection over Union (MIoU) and 97.39% Pixel Accuracy (PA) achieved on the training set. This approach offers a robust solution for effectively segmenting ultra-high resolution remote sensing images.

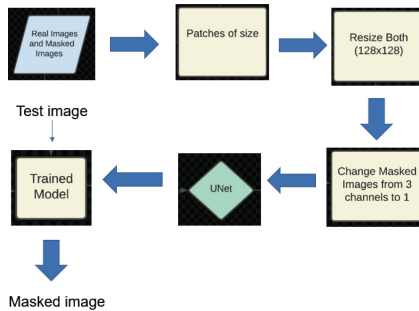
### 3 Image Semantic Segmentation

In this project, we collect and preprocess a diverse topological image dataset, including aerial imagery and street-level photographs. We implement UNet for semantic segmentation and utilize ResNet for weight initialization to enhance training. The UNet model is trained on the dataset, and we explore model ensemble techniques for improved segmentation performance. Additionally, we employ R-CNN for object masking, using ResNet as the backbone for feature extraction and bounding box regression. Model evaluation is conducted using metrics like IoU, mAP, and pixel-wise accuracy to assess segmentation quality. Finally, we consider the feasibility of real-world deployment for

the models, taking into account their computational requirements and potential practical applications.

The proposed methodology combines various advanced techniques to enhance topological image segmentation for imagery. It begins with curating a diverse dataset and applying data augmentation to increase its size and diversity. Core segmentation models, including UNet, ResNet, and R-CNN, are used, with UNet for pixel-level segmentation, ResNet for weight initialization, and R-CNN for object masking. Ensemble learning is explored to improve segmentation accuracy and robustness by combining multiple model predictions. Additionally, semi-supervised and self-supervised learning methods are investigated to leverage unlabeled data for improved generalization. Uncertainty estimation techniques help measure model confidence, critical in safety-critical applications. Robustness is assessed by evaluating models against adversarial attacks, and defenses are developed accordingly. Domain adaptation techniques are used to ensure models can generalize across different aerial image sources. Performance 26 evaluation includes metrics like IoU, mAP, and pixel-wise accuracy, considering computational efficiency and memory requirements for real-world deployment. Overall, this comprehensive methodology aims to advance topological image segmentation for aerial imagery and contribute to dynamic cartography and GIS applications.

### 3.1 Block Diagram

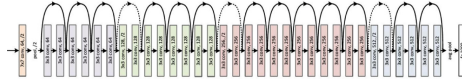


**Fig. 1.** Block diagram of Image Semantic Segmentation

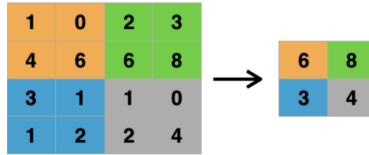
The Fig. 1 details about block diagram which is divided into distinct stages represented by different blocks, each serving a specific purpose. The process begins with “Real images,” which are unaltered images from sources like cameras, and “Masked images,” where specific regions are segmented out using binary or alpha masks. The technique of “Patchifying” is introduced to efficiently process large images in semantic segmentation by dividing them into smaller overlapping patches. These patches are then “Resized” to match model requirements, ensuring memory and computational efficiency. Subsequently, the concept of “Change



textures, and patterns. In topological image segmentation, ResNet kickstarts the UNet architecture or other custom models, with fine-tuning focusing on task-specific layers. The deeper ResNet layers retain their pre-learned image features, accelerating training and enhancing performance in advanced deep learning applications, such as semantic segmentation in cartography.



**Fig. 3.** Resnet



**Fig. 4.** Max Polling

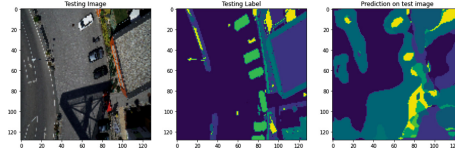
The above Fig. 4 is max pooling example. It operates by dividing the input image into smaller regions and selecting the maximum pixel value from each region. This process effectively reduces the spatial dimensions of the image while retaining essential features. Max pooling helps in capturing important patterns, edges, and textures, making it easier for the neural network to recognize and segment objects within the image. It aids in downsampling the image, reducing computational complexity, and enhancing the model’s ability to generalize. Max pooling is a non-linear operation that aids in extracting salient information for accurate image segmentation in deep learning-based projects.

## 4 Results and Discussion

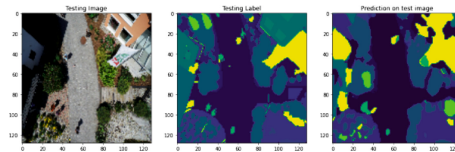
### 4.1 Results

The below figures shows the predicted results by the trained model. The model is trained with aerial images captured by the drone. In an image semantic segmentation project, the primary objective is to assign precise semantic labels to individual pixels within an input image, essentially dividing it into distinct regions based on content. Specifically, in the context of using drone imagery, the outcome is a segmentation map where each pixel is color-coded to signify its corresponding class, such as buildings, roads, trees, or water bodies. The segmentation model’s success is measured by its ability to accurately delineate

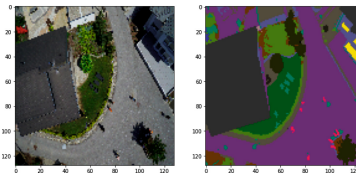
object boundaries, identify regions of interest, offer fine-grained segmentation within classes, ensure label consistency across the image, maintain the original spatial resolution, and perform efficiently in real-time. Additionally, the model should exhibit robustness in handling variable lighting, weather, and environmental conditions, facilitating effective analysis and decision-making for diverse drone-based applications (Figs. 5 and 6).



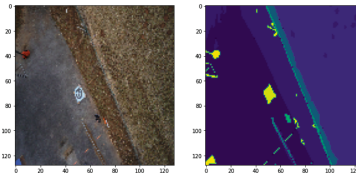
**Fig. 5.** Predicted Result-1



**Fig. 6.** Predicted Result-2



**Fig. 7.** Masked Image-1



**Fig. 8.** Masked Image-2

The above Figs. 7 and 8 are the masked images of image semantic segmentation, the primary objective is to assign semantic labels to individual pixels within an input image, effectively partitioning the image into distinct categories.

This process generates a visually informative output where each pixel is color-coded based on its semantic classification, offering a clear delineation of elements within the aerial image. These categories typically encompass buildings, roads, vegetation, water bodies, and vehicles, each represented by a unique color for easy identification. Depending on the dataset and model capabilities, additional objects like pedestrians and streetlights may also be categorized. The resulting segmented image serves as a map-like depiction, invaluable for applications spanning urban planning, land cover analysis, environmental monitoring, and drone autonomous navigation.

### 4.2 Training and Validation Accuracy



Fig. 9. Accuracy and Validation plot



Fig. 10. Accuracy and Validation plot

The above Figure is graph of Accuracy vs Number of Epochs. In an image semantic segmentation project, monitoring training and validation graphs is crucial for assessing model performance. By the 100th epoch, the training loss should have reached a low, stable point, indicating model convergence. Sudden loss spikes later on may suggest overfitting. While not ideal, accuracy can still show improvement over epochs. In validation, loss trends should mirror

training, demonstrating good generalization. Additionally, validation IoU/mIoU (Intersection over Union/mean Intersection over Union) should steadily rise, surpassing values from earlier epochs, indicating improved performance on unseen data. These metrics help ensure the model is effectively learning and generalizing semantic segmentation tasks (Figs. 9 and 10).

## 5 Conclusions and Future Scope

Semantic segmentation of aerial imagery is a groundbreaking field with immense potential across various domains, including urban planning, environmental monitoring, disaster response, and infrastructure development. By harnessing advanced deep learning techniques and powerful tools such as UNet, ResNet, and R-CNN, researchers and practitioners can achieve precise pixel-level image analysis, enabling a profound understanding of intricate landscapes and objects. The utilization of UNet, ResNet, and R-CNN in topological image segmentation yields promising results. UNet's U-shaped architecture and skip connections enable accurate and detailed segmentations, while ResNet's weight initialization enhances training efficiency and performance. R-CNN excels in object masking, further refining the segmentation process.

The future of this field holds exciting opportunities, including merging artistic vision with AI advancements to create visually stunning maps that resonate emotionally with users. Real-time dynamic maps, multi-modal data fusion, interactive user-driven maps, and ethical considerations for inclusive mapping are areas for further enrichment. Integrating semantic segmentation with aerial imagery in tools like Spyder and Visual Studio Code streamlines workflows, enhances efficiency, and promotes collaboration. These versatile IDEs, with Python support, Jupyter Notebook integration, Git capabilities, and interactive consoles, empower researchers to tackle complex tasks iteratively for optimal results.

In the realm of image semantic segmentation, a promising future unfolds as artistic creativity merges with cutting-edge AI. By infusing artistic styles into AI-generated segmentations, visually captivating maps that retain geographical precision while evoking emotions can be crafted. This fusion promises maps that engage and resonate deeply across domains like tourism, education, and heritage preservation. Dynamic maps that adapt in real-time using AI-driven segmentation and data from sensors and social media stand to provide instant updates on traffic, weather, and events. Further evolution lies in multi-modal data integration, combining aerial imagery, LiDAR, and street-level photos for more accurate results. Interactive user-driven maps, tailored through AI-powered segmentation and user feedback, offer customization and usability. Yet, ethical dimensions remain crucial, demanding unbiased, inclusive models that mitigate inequalities. The future holds transformative potential at the crossroads of artistic vision and AI progress, revolutionizing image segmentation's impact on our evolving world.

## References

1. Huang, D., Gao, F., Tao, X., Du, Q., Lu, J.: Toward semantic communications: deep learning-based image semantic coding. *IEEE J. Sel. Areas Commun.* **41**(1), 55–71 (2023). <https://doi.org/10.1109/JSAC.2022.3221999>
2. Lokumarambage, M.U., Gowrisetty, V.S.S., Rezaei, H., Sivalingam, T., Rajatheva, N., Fernando, A.: Wireless end-to-end image transmission system using semantic communications. *IEEE Access* **11**, 37149–37163 (2023). <https://doi.org/10.1109/ACCESS.2023.3266656>
3. Zheng, Y., Yuan, X., Qiu, S., Li, W., Zhong, G., Sarem, M.: A novel semantic segmentation algorithm for RGBD images based on non-symmetry and anti-packing pattern representation model. *IEEE Access* **11**, 36290–36299 (2023). <https://doi.org/10.1109/ACCESS.2023.3266251>
4. Liu, W., Su, F.: Unsupervised adversarial domain adaptation network for semantic segmentation. *IEEE Geosci. Remote Sens. Lett.* **17**(11), 1978–1982 (2020). <https://doi.org/10.1109/LGRS.2019.2956490>
5. Peng, C., Zhang, K., Ma, Y., Ma, J.: Cross fusion net: a fast semantic segmentation network for small-scale semantic information capturing in aerial scenes. *IEEE Trans. Geosci. Remote Sens.* **60**, 1–13 (2022). <https://doi.org/10.1109/TGRS.2021.3053062>
6. Guo, Y., Wang, F., Xiang, Y., You, H.: Semisupervised semantic segmentation with certainty-aware consistency training for remote sensing imagery. *IEEE J. Sel. Top. Appl. Earth Obs. Remote Sens.* **16**, 2900–2914 (2023). <https://doi.org/10.1109/JSTARS.2023.3255553>
7. Zhou, Z., Siddiquee, M.M.R., Tajbakhsh, N., Liang, J.: UNet++: redesigning skip connections to exploit multiscale features in image segmentation. *IEEE Trans. Med. Imaging* **39**(6), 1856–1867 (2020). <https://doi.org/10.1109/TMI.2019.2959609>
8. Zhang, Y., Zhang, Y., Zhang, Q.: Semantic segmentation of traffic scene based on DeepLabv3+ and attention mechanism. In: 2023 3rd International Conference on Neural Networks, Information and Communication Engineering (NNICE), pp. 542–547 (2023). <https://doi.org/10.1109/NNICE58320.2023.10105805>
9. Hu, H., Cai, H., Ma, Z., Wang, W.: Semantic segmentation based on semantic edge optimization. In: 2021 International Conference on Electronic Information Engineering and Computer Science (EIECS), pp. 612–615 (2021). <https://doi.org/10.1109/EIECS53707.2021.9587939>
10. Zhang, H., Jiang, Z., Xu, J., Yao, X.: Semantic segmentation of ultra-high resolution remote sensing images based on fully convolutional neural networks. In: 2023 4th International Conference on Computer Vision, Image and Deep Learning (CVIDL), pp. 159–165 (2023). <https://doi.org/10.1109/CVIDL58838.2023.10164846>
11. Xie, X., Xu, Z., Tao, J., Yuan, J.Y., Wu, S.D.: Semantic segmentation algorithm for night traffic scene based on visible and infrared images. In: 2022 3rd Asia Conference on Computers and Communications (ACCC), pp. 103–108 (2022). <https://doi.org/10.1109/ACCC58361.2022.00024>
12. Tran, T., Kwon, O.-H., Kwon, K.-R., Lee, S.-H., Kang, K.-W.: Blood cell images segmentation using deep learning semantic segmentation. In: 2018 IEEE International Conference on Electronics and Communication Engineering (ICECE), pp. 13–16 (2018). <https://doi.org/10.1109/ICECOME.2018.8644754>

13. Chen, H., Yang, S., Lyu, T.: Multitask semantic segmentation network using adaptive multiscale feature fusion. In: 2022 International Conference on Computing, Communication, Perception and Quantum Technology (CCPQT), pp. 64–69 (2022). <https://doi.org/10.1109/CCPQT56151.2022.00018>
14. Deng, C., Liang, L., Su, Y., He, C., Cheng, J.: Semantic segmentation for high-resolution remote sensing images by light-weight network. In: 2021 IEEE International Geoscience and Remote Sensing Symposium IGARSS, pp. 3456–3459 (2021). <https://doi.org/10.1109/IGARSS47720.2021.9554244>