

Telemetry System at Ground Control Station of Atmospheric Balloon Payload Using Delphi 7

Helfy Susilawati¹, Akhmad Fauzi Ikhsan², Mugits Rabbani³, Ade Rukmana⁴, Teddy Mulyadi Hidayat⁵

{helfy.susilawati@uniga.ac.id¹, txfauzi@gmail.com², mugitrade@gmail.com³,
ade77rukmana@gmail.com⁴, teddy.mulyadi@uniga.ac.id⁵}

Universitas Garut¹, Universitas Garut², Universitas Garut³, Universitas Garut⁴, Universitas Garut⁵

Abstract. Telemetry is a communication process by which an object measurement is sent to a remote point through a wired or wireless data transmission process. This study designs a telemetry system using Delphi 7, which is used to display data parameter from an atmospheric balloon payload. Information transmission from the payload to the computer is facilitated by 433 MHz radio modules. Information from the payload is processed and displayed on the application interface in the form of numerical and graphical data. These data are saved as a *.txt file. The interface is designed using 9600 8N1 (9600 baud, 8 data bits, no parity, and 1 stop bit) serial protocols. The displayed parameters include air temperature, air pressure, air humidity, altitude, transverse lines and longitudinal lines. The data history can be read by notepad or other similar Windows applications.

Keywords: Telemetry, 433 MHz radio, Delphi 7

1 Introduction

A payload is the substance carried by a sonde balloon or a radiosonde into the atmosphere about 10 km above sea level. The radiosonde works at a frequency of 433 MHz. It measures atmospheric parameters and monitors conditions above the maritime area and transmits data to the Ground Control Station (GCS) [1]. The payload consists of one or more instruments including an electronic control system and software [2]. Radio telemetry is frequently used for its mobility and applicability in turbulent locations with entrapped air, such as hydroelectric dam tailraces [3]. A telemetry technology measures a parameter of an object. The measurements are transmitted to receiving equipment through a wired and wireless network [4]. The data transmission is usually one-way, from the sensor to the data logger system [5]. It is necessary to ensure error-free data transmission and reproduction [6]. Therefore, data transmission from the payload to GCS requires software that serves as a data receiver, data reader, and data processor. The software interface displays data changes in the 3DR 433 MHz radio (ground). The software also connects the antenna tracker to personal computer at the ground segment (GS).

The telemetry system has been previously used underwater to study fish behavior [7] and in medical-surgical units for monitoring purposes [8]. Telemetry is frequently used in the monitoring of complicated medical patients without rigorous evidence supporting its use.[9] For another case, most of the research on modern healthcare systems, especially in health monitoring, is suggested for long term monitoring of patients to collect health status information or localization and

tracking information. [10] In this study, the telemetry system is used to monitor air temperature, pressure, humidity at a particular latitude and longitude in a particular time. Such information is sent as a payload to the monitoring device interface which will be displayed using Delphi 7 in the form of numerical and graphical data and stored as a *.txt (tab separated value) file format.

2 Method

This study was conducted using a prototyping. Prototyping is one method of exploring, both individually and collaboratively, a solution space (mathematical entity) for a problem [11] Prototyping method through a procedure consisting of planning, specification, design, and results [12]. The prototype-based model is specially characterized by one idea, the object is the only abstraction provided to the programmer [13]. A prototype is an enactable mock-up or model of a software system that enables evaluation of features or functions through user and developer interaction with operational scenarios. [14] But, for the software, prototype has a bit different. The basic activities or phases to be performed for developing a software system are Determination of System's Requirements, Design of system, Development (coding) of software, and System Testing [15] Data obtained from the radio is displayed on a PC. The output data is sent to Arduino Tracker, which also is shown in the display as illustrated in Figure 1.

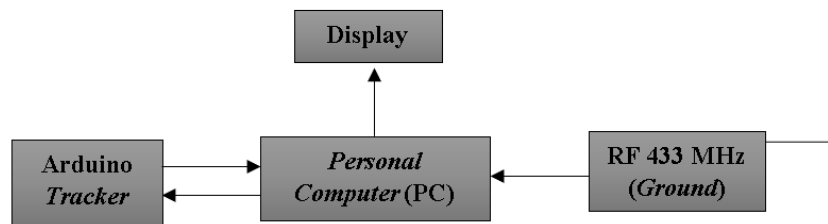


Figure 1. PC Block Diagram with Tracker

Figure 1 shows that data will be sent by a payload to a PC. An interface is required to read the received data. The PC will send the data to Arduino tracker, and in its turn, Arduino tracker will send back the data to the PC to be displayed on the interface.

3 Result and Analysis

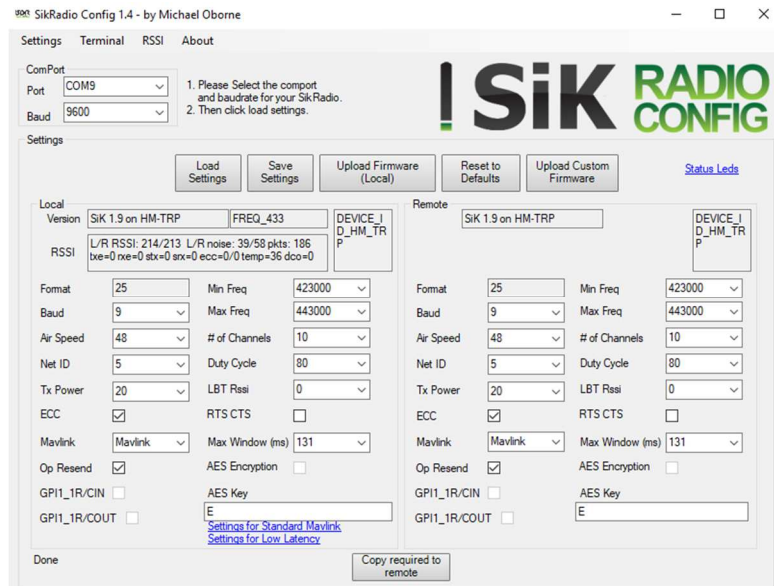


Figure 2. Radio module setting

Figure 2 shows an application to configure the radio frequency in order to synchronize the air module with the ground module so that the air module can send data from the payload to the ground module to be displayed on the interface. This configuration requires two PCs and two RF modules.



Figure 3. Connecting Ground RF Module to Air RF Module

Figure 3 illustrates the connection between the air RF module and the ground RF module. The connection is indicated by the constant light (not blinking).



Figure 4. Communication Testing between Transmitter and Receiver Module

Figure 4 presents the communication testing between transmitter and receiver module. It shows that the two modules are successfully connected, indicating that the RF 433 Mhz is ready to use.

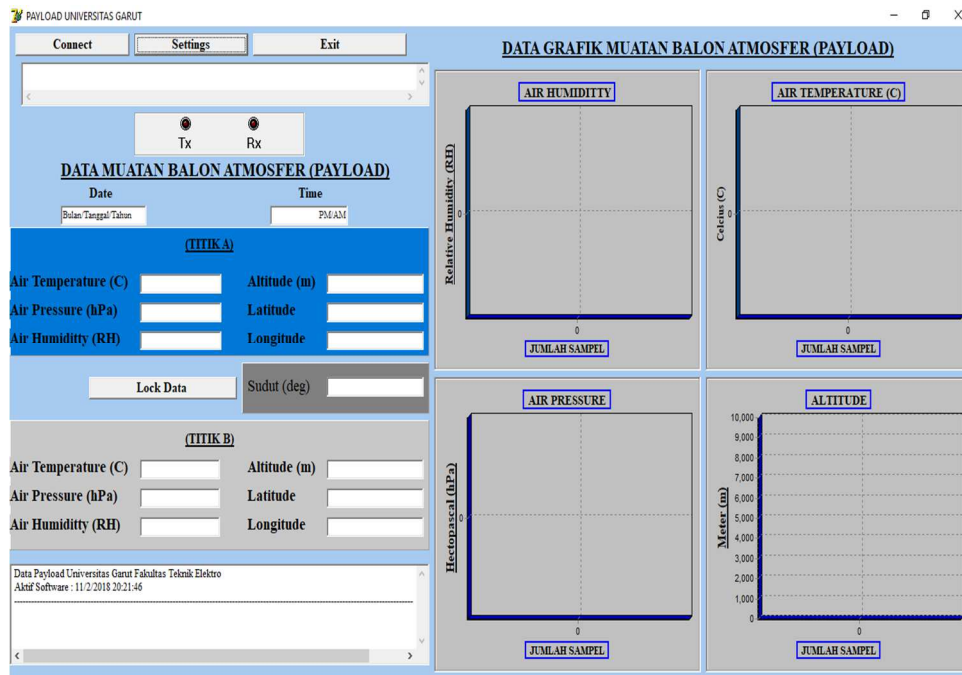


Figure 5. Delphi User Interface

Figure 5 shows the interface on which data from the payload can be displayed.

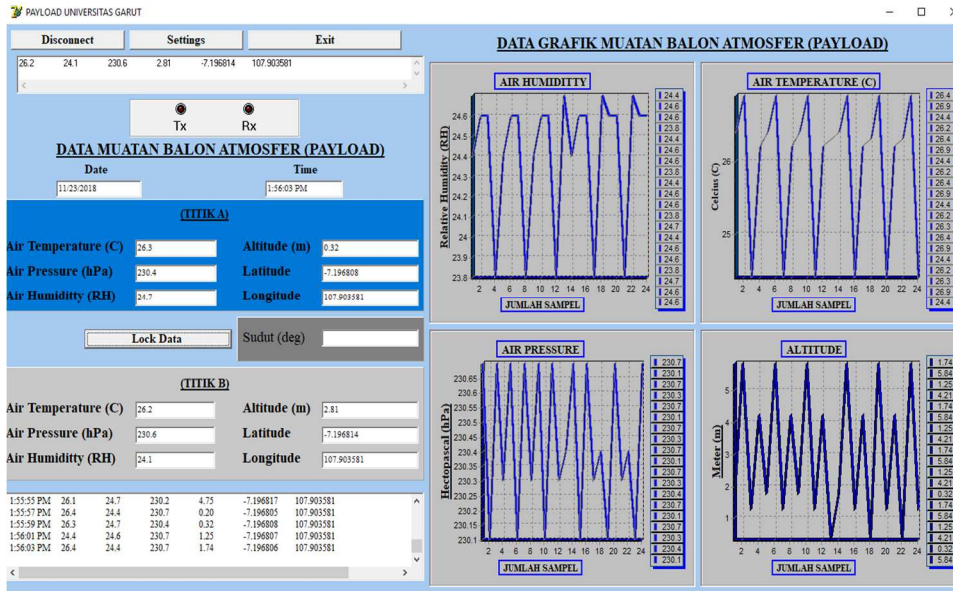


Figure 6. Data as Displayed on the User Interface

Figure 6 shows how data is displayed on the interface. It shows that all component works well.

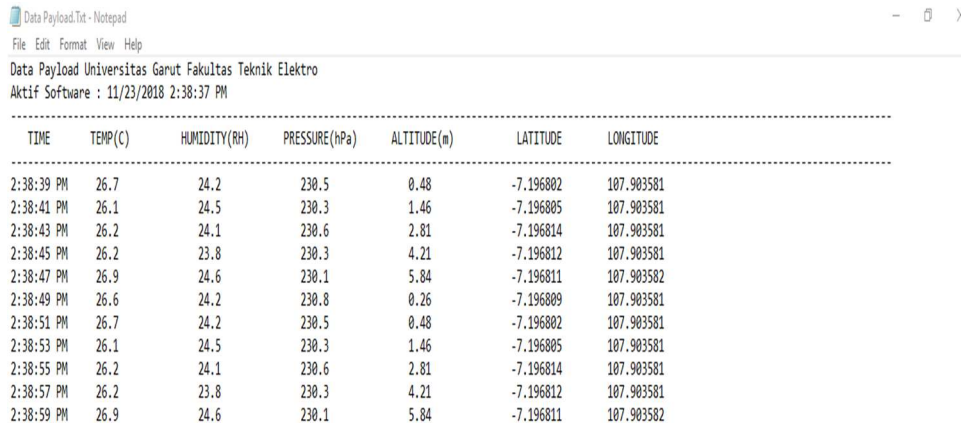


Figure 7. Payload Data History as Displayed on Notepad

Figure 7 shows how data is recorded in the form of *.txt file. The users can anytime check this history. This data is stored using a 5 second interval.

Table 1. Payload Data with Error List

TIME	PRESSUR E (hPa)	TEMP (C)	HUMIDIT Y (RH)	LAT	LONG	ALT
4:32:12 PM	928.10	25.94	63.20	- 7.113160	107.90270 2	745.70
4:32:17 PM	928.05	25.94	63.10	- 7.113160	107.90270 2	745.40
4:32:22 PM	928.12	25.94	63.20	- 7.113135	107.90271 7	745.50
4:32:27 PM	928.11	25.81	62.40	- 7.113109	107.90278 6	742.90
4:32:32 PM	928.15	25.75	63.10	- 7.113066	107.90283 9	743.40
4:32:37 PM	928.09	25.75	63.50	- 7.113059	107.90284 7	743.30
4:32:42 PM	928.13	25.81	65.30	- 7.113069	107.90284 7	743.40
4:32:47 PM	928.12	25.81	65.00	- 7.113117	107.90283 9	742.70
4:32:52 PM	928.12	25.75	64.60	- 7.113123	107.90284 7	743.20
4:32:57 PM	928.12	25.81	66.30	- 7.113142	107.90283 9	743.20
4:33:02 PM	928.17	25.81	65.20	- 7.113162	107.90286 2	743.70
4:33:07 PM	928.10	25.75	64.50	- 7.113172	107.90285 4	743.60
4:33:12 PM	928.15	25.81	66.70	- 7.113172	107.90285 4	743.60
4:33:17 PM	928.17	25.87	68.20	- 7.113178		
4:33:22 PM	107.902839	743.00				
4:33:27 PM	928.11	25.75	65.80	- 7.113219	107.90281 6	743.20
4:33:32 PM	928.15	25.69	66.00	- 7.113300	107.90281 6	742.70
4:33:37 PM	928.15	25.50	65.20	- 7.113283	107.90288 5	744.20
4:33:42 PM	928.10	25.44	64.80	- 7.113280	107.90289 3	744.50
4:33:47 PM	928.05	25.44	65.70	- 7.113280	107.90290 0	745.40
4:33:52 PM	928.04	25.44	65.00	- 7.113268	107.90290 8	746.40
4:33:57 PM	928.07	25.37	65.20	- 7.113263	107.90291 5	747.60

4:34:02 PM	928.04	25.31	65.30	-	107.90291	746.90
				7.113254	5	
4:34:07 PM	928.06	25.25	64.90	-	107.90293	747.10
				7.113225	8	
4:34:12 PM	928.05	25.25	66.10	-	107.90295	748.20
				7.113220	4	
4:34:17 PM	928.04	25.25	67.60	-	107.90295	748.40
				7.113219	4	
4:34:22 PM	928.05	25.25	66.20	-	107.90295	748.10
				7.113293	4	
4:34:27 PM	928.09	25.19	66.00	-	107.90297	749.70
				7.113324	6	
4:34:32 PM	928.08	25.19				
4:34:37 PM	66.20	-	107.902984	750.50		
		7.113328				
4:34:42 PM	928.07	25.12	65.60	-	107.90298	751.30
				7.113327	4	
4:34:47 PM	928.07	25.12	66.20	-	107.90298	751.90
				7.113326	4	
4:34:52 PM	928.08	25.12	66.40	-	107.90298	753.00
				7.113323	4	
4:34:57 PM	928.07	25.12	67.10	-	107.90299	752.80
				7.113326	2	
4:35:02 PM	928.09	25.19	69.40	-	107.90298	752.80
				7.113328	4	
4:35:07 PM	928.08	25.19	69.50	-	107.90293	751.90
				7.113332	8	
4:35:12 PM	928.17	25.12	68.50	-	107.90289	750.60
				7.113302	3	
4:35:17 PM	928.12	25.06	67.70	-	107.90285	749.80
				7.113294	4	
4:35:22 PM	928.15	25.06	66.90	-	107.90285	748.60
				7.113298	4	
4:35:27 PM	928.17	25.06	67.50	-	107.90284	747.40
				7.113300	7	
4:35:32 PM	928.15	25.00	67.80	-	107.90283	746.80
				7.113302	9	
4:35:37 PM	928.15	25.00	66.70	-	107.90283	747.20
				7.113301	9	
4:35:42 PM	928.17	25.00	67.00	-	107.90283	747.30
				7.113302	9	
4:35:47 PM						
4:35:52 PM	928.16	25.00	66.90	-	107.90284	746.80
				7.113304	7	

4:35:57	928.22	25.00	67.40	-	107.90281	746.10
PM				7.113292	6	
4:36:02	928.30	25.00	67.20	-	107.90282	745.90
PM				7.113241	4	
4:36:07	928.24	24.94	67.00	-	107.90283	745.50
PM				7.113196	2	
4:36:12	928.28	24.94	67.10	-	107.90283	745.70
PM				7.113191	2	
4:36:17	928.30	24.94	66.90	-	107.90278	745.90
PM				7.113174	6	
4:36:22	928.31	24.94	66.50	-	107.90273	747.10
PM				7.113148	2	
4:36:27	928.24	24.94	67.00	-	107.90272	747.50
PM				7.113149	5	
4:36:32	928.18	24.94	66.60	-	107.90271	748.10
PM				7.113149	7	
4:36:37	928.21	24.94	67.20	-	107.90271	747.90
PM				7.113149	7	
4:36:42	928.19	24.94	67.60	-	107.90270	747.50
PM				7.113150	9	

Table 1 shows that the data is recorded in a 5 second interval. The yellow parts show that some data are missing. The amount data passing through a system from input to output or throughput can be calculated using the following formula:

$$\text{Throughput} = \frac{\text{Amount of transmitted data}}{\text{Transmission interval time}} \dots\dots\dots (1)$$

The amount of transmitted data is calculated using the following formula:

$$\text{Data character range} \times \text{user bits} \dots\dots\dots (2)$$

Table 1 shows that the data has 79 characters; each character has 1 byte or 8 bits. Therefore, the amount of transmitted data is 15.8 bytes/s:

$$\text{Throughput} = \frac{79}{5} = 15.8 \text{ bytes/second}$$

To fix this error, we call the data again in another time. The error still can not to fix the data at the same time when the error appear.

4 Conclusion

The designed interface managed to display information received from a payload in the form of numerical and graphical data. These data are stored in a 5 second interval in the form of *.txt file format. Sometimes, errors occur during data recording. The throughput is 15.8 bytes per second, and the number of transmitted characters is 79, meaning that the transmitted data is 632 bits or 79 bytes.

5 Acknowledgement

This publication is made possible by the support of Universitas Garut, Indonesia

References

- [1] "Homepage | Komurindo-Kombat 2018." [Online]. Available: <http://komurindo-kombat.lapan.go.id/>. [Accessed: 15-Jan-2020].
- [2] "150.000 Ground Segment Satelit Satria Ditender Terpisah - Teknologi Bisnis.com." [Online]. Available: <https://teknologi.bisnis.com/read/20190613/101/933430/150.000-ground-segment-satelit-satria-ditender-terpisah>. [Accessed: 15-Jan-2020].
- [3] H. Junianto, "Sistem Komunikasi Satelit."
- [4] H. Liu, H. Dai, S. Wu, and S. Huang, "Chord-based Resource Identifier-to-Locator Mapping and Searching for the Future Internet," *TELKOMNIKA (Telecommunication Comput. Electron. Control.*, vol. 12, no. 3, p. 703, Sep. 2014, doi: 10.12928/v12i3.99.
- [5] "Modern Telemetry - Google Buku." [Online]. Available: [https://books.google.co.id/books?id=7XSfDwAAQBAJ&pg=PR2&lpg=PR2&dq=Krejcar,+O.+Modern+Telemetry.+Rijeka,Croatia:+Intech.+.\(2011\).&source=bl&ots=R5nMMYVlBf&sig=ACfU3U0DdA8PBjApnjN46BzZIC--91gBnA&hl=id&sa=X&ved=2ahUKewi9mLitl4XnAhUPA3IKHf7eC0oQ6AEwAXoECAoQAQ#v=onepage&q=Krejcar%2C%20O.Modern%20Telemetry.Rijeka%2CCroatia%3AIntech..\(2011\).&f=false](https://books.google.co.id/books?id=7XSfDwAAQBAJ&pg=PR2&lpg=PR2&dq=Krejcar,+O.+Modern+Telemetry.+Rijeka,Croatia:+Intech.+.(2011).&source=bl&ots=R5nMMYVlBf&sig=ACfU3U0DdA8PBjApnjN46BzZIC--91gBnA&hl=id&sa=X&ved=2ahUKewi9mLitl4XnAhUPA3IKHf7eC0oQ6AEwAXoECAoQAQ#v=onepage&q=Krejcar%2C%20O.Modern%20Telemetry.Rijeka%2CCroatia%3AIntech..(2011).&f=false). [Accessed: 15-Jan-2020].
- [6] A. Devarajan *et al.*, "Electronic instrumentation capabilities for scientific ballooning in India," *cosp*, vol. 42, p. PSB.1-45-18, 2018.
- [7] "-Length, weight, and tagging data for small- mouth bass implanted with... | Download Table." [Online]. Available: https://www.researchgate.net/figure/Length-weight-and-tagging-data-for-small-mouth-bass-implanted-with-radio_tbl1_254310689. [Accessed: 15-Jan-2020].
- [8] "CX-D80 DAI NIPPON, CX-D80H DAI NIPPON, CX 330 DAI NIPPON - FUORI PRODUZIONE, Ermes - Distribuzione di stampanti termografiche per carte plastiche." [Online]. Available: http://www.ermes-online.it/cgi-bin/pub/wa_public.cgi?_mode=list_prod&cat_level=2&cat2_id=3&gclid=Cj0KCQiAjfVwBRcKARIsAIqSWlOnYqZlwtfND9MBSQuVXxwq6J6BN6wqijxu9Y7rZYXrohVrimqbQ1MaAqX9EALw_wcB. [Accessed: 15-Jan-2020].
- [9] "ESC Training Grants." [Online]. Available: https://www.escardio.org/Education/Career-Development/Grants-and-fellowships/ESC-training-grants?gclid=Cj0KCQiAjfVwBRcKARIsAIqSWlPkvfJK8KFYeigLdaEHefzTqy4EOXSC9AjYdSZ4EbMShZLtyasOs2MaAi4yEALw_wcB. [Accessed: 15-Jan-2020].
- [10] "Fixed-Wing Air Ambulance - RACQ LifeFlight Rescue." [Online]. Available: <https://www.lifeflight.org.au/air-ambulance/?gclid=Cj0KCQiAjfVwBRcKARIsAIqSWIMQ5YI50OALcd1edhh56pBp->

i8-k8l_7CiWs_pha5o63deJXkzw_JUaAtmREALw_wcB. [Accessed: 15-Jan-2020].

- [11] “Trainings & Workshops - QGLUE.” [Online]. Available: https://www.q-glue.com/trainings-workshops/?utm_source=google&gclid=Cj0KCQiAjfvwBRckARIsAIqSWIN1ZP1viPOapSSHQ5v8_5jreyUPD7-OhggMBVSXETQfJOS6VVERx7gaAmlwEALw_wcB. [Accessed: 15-Jan-2020].
- [12] “Interactive prototypes made easy - Free plan available - by Pidoco.” [Online]. Available: https://pidoco.com/en/lp/prototype?piwik_campaign=en_P20_prototype&piwik_kwd=design_prototypes. [Accessed: 15-Jan-2020].
- [13] “Amazon.com: object oriented programming.” [Online]. Available: https://www.amazon.com/s?k=object+oriented+programming&adgrpid=78912437182&gclid=Cj0KCQiAjfvwBRckARIsAIqSWIN5a6bxutj9DVM1VTICPrFwVMLRvWa6QGfWfg2-XX5m_tjkJT8j5lgaAqwcEALw_wcB&hvadid=393487771131&hvdev=c&hvlocphy=9072569&hvnetw=g&hvpos=1t1&hvqmt=b&hvrnd=6401957316709008079&hvtargid=kwd-10653816&hydacr=14395_10954176&tag=hydglogoo-20&ref=pd_sl_6c0j3cf2oq_b. [Accessed: 15-Jan-2020].
- [14] “Recreation Software – Radically Simplified | RecDesk.” [Online]. Available: http://recdesk.com/?gclid=Cj0KCQiAjfvwBRckARIsAIqSWIODA0J3UBLaE_-Cl80f9zp4Eb_Q0YB24ZZoo6tJXIJAEvT-wAzE4eAaAo6tEALw_wcB. [Accessed: 15-Jan-2020].
- [15] “Graduate programs.” [Online]. Available: https://www.tue.nl/studeren/graduate-school/graduate-programs/?gclid=Cj0KCQiAjfvwBRckARIsAIqSWINi8fckHCCkmBUdqcnZLX2z0gIUvDem63nGL_0cqtJf3_ytjn0mTlwaAhQPEALw_wcB. [Accessed: 15-Jan-2020].