

## A Survey on Internet of Things Architectures

P.P. Ray<sup>1,\*</sup>

<sup>1</sup>Department of Computer Applications, Sikkim University, India

### Abstract

Internet of Things is a platform where every day devices become smarter, every day processing become intelligent, and every day communication become informative. While the Internet of Things is still seeking its own shape, its effects have already started in making incredible strides as a universal solution media for the connected scenario. Architecture specific study does always pave the conformation of related field. The lack of overall architectural knowledge is presently resisting the researchers to get through the scope of Internet of Things centric approaches. This literature surveys Internet of Things oriented architectures that are capable enough to improve the understanding of related tool, technology, and methodology to facilitate developer's requirements. Directly or indirectly, the presented architectures propose to solve real-life problems by building and deployment of powerful Internet of Things notions. Further, research challenges have been investigated to incorporate the lacuna inside the current trends of architectures to motivate the academics and industries get involved into seeking the possible way outs to apt the exact power of Internet of Things. A main contribution of this survey paper is that it summarizes the current state-of-the-art of Internet of Things architectures in various domains systematically.

**Keywords:** Internet of Things (IoT), Architecture, Cyber Physical System.

Received on 24 November 2015, accepted on 19 January 2016, published on 01 December 2016

Copyright © 2016 P.P. Ray *et al.*, licensed to EAI. This is an open access article distributed under the terms of the Creative Commons Attribution licence (<http://creativecommons.org/licenses/by/3.0/>), which permits unlimited use, distribution and reproduction in any medium so long as the original work is properly cited.

doi: 10.4108/eai.1-12-2016.151714

### 1. Introduction

Internet of Things (IoT) refers to the stringent connectedness between digital and physical world [8], [19], [20]. Various researchers have described IoT in multitude form:

- “a dynamic global network infrastructure with self-configuring capabilities based on standard and interoperable communication protocols where physical and virtual 'Things' have identities, physical attributes, and virtual personalities and use intelligent interfaces, and are seamlessly integrated into the information network” [132].
- “3A concept: anytime, anywhere and any media, resulting into sustained ratio between radio and man around 1:1” [29].

- “Things having identities and virtual personalities operating in smart spaces using intelligent interfaces to connect and communicate within social, environmental, and user contexts” [13]. The semantic meaning of “Internet of Things” is presented as “a world – wide network of interconnected objects uniquely addressable, based on standard communication protocols”.

We will consider the definition provided by the ITU:

- “A global infrastructure for the information society enabling advanced services by interconnecting (physical and virtual) things based on, existing and evolving, interoperable information and communication technologies” [142].

As per Gartner [1], 25 billion devices will be connected to the internet by 2020 and those connections will facilitate the used data to analyze, pre-plan, manage, and make

\*Corresponding author. Email:ppray@cus.ac.in

intelligent decisions autonomously. The US National Intelligence Council (NIC) has embarked IoT as one of the six “Disruptive Civil Technologies” [12]. In this context, we can see that service several sectors, such as: transportation, smart city, domotics, smart health, e-governance, assisted living, e-education, retail, logistics, agriculture, automation, industrial manufacturing, and business/process management etc., are already getting benefited from various architectural forms of IoT [9],[10],[11].

IoT architecture may be treated as a system which can be physical, virtual, or a hybrid of the two, consisting of a collection of numerous active physical things, sensors, actuators, cloud services, specific IoT protocols, communication layers, users, developers, and enterprise layer. Particular architectures do act as a pivot component of IoT specific infrastructure while facilitating the systematic approach towards dissimilar components resulting solutions to related issues. A well defined form of IoT architecture is currently available for knowledge purpose:

- *“a dynamic global network infrastructure with self-configuring capabilities based on standard and interoperable communication protocols where physical and virtual 'Things' have identities, physical attributes, and virtual personalities and use intelligent interfaces, and are seamlessly integrated into the information network”* [132].

The exponential growth of low cost mobile devices and MEMS technology have pushed up the growth of IoT and allied technologies in a multitude form. It is expected that actual representation of IoT is going to blink around 2025. The graphical notion representing the growth is devised by International Telecommunication Union (ITU) on its meeting held in March, 2015 in Geneva. The full fledged exploration of wearable technology, cognitive computing, and artificial intelligence seem to come very later on the graph, presented in this occasion.

Available architectures explore multiple opportunities to seek the advantageous part of IoT while encouraging the developer and user groups to get application specific solutions. But, the central issue of these architectures is the lack of full interoperability of interconnected things in abstraction level. This leads to invoke many proclaimed problems, such as: degraded smartness of high degree, less adaptability, limited anonymity, poor behavior of the system, reduced trust, privacy, and security. IoT architectures do pose several network oriented problems due to its limitation of homogeneity approach. Several institutions, standardization bodies, and researchers are currently engaged with the development of bringing uniformity in the architectures to fulfill the required technological needs. This paper presents a precise picture of the present state-of-the-art in the IoT architectures based on 129 research papers selected for this purpose. More specifically, this article:

- educates the reader with a state-of-the-art description of domain specific IoT architectures;

- presents the trends in several sectors of practices;
- identifies research problems that researchers shall face in near future;
- prescribes future directions.

The remainder of the paper is organized as follows. Section 2 presents domain specific state-of-the-art in IoT. Section 3 presents the open research issues associated to IoT architectures and futuristic road map showing Io-\* (Internet of \*) concept, on which researchers should focus more in near future.

## 2. Survey on Domain Specific IoT Architecture

This section prescribes the works done so far by the scientists around the globe [35]. Various domain specific architectures based on the broad areas, such as: RFID [34], service oriented architecture, wireless sensor network, supply chain management, industry, healthcare, smart city, logistics, connected living, big data, cloud computing, social computing, and security are described in this section. The selection of these domains depends upon current scenario of IoT applicability. It has been tried to incorporate as much directions into this article, but due to the size constraints, present limitations have been made.

### 2.1. RFID

#### *EPC*

The term “IoT” was initially proposed to refer to uniquely identifiable interoperable connected objects with Radio-Frequency IDentification (RFID) technology [133]. Later on researchers did relate IoT with other technologies, such as: sensors, actuators, GPS devices, and mobile devices. The “thing” oriented approach of the IoT is in fact attributed by the Auto-ID Labs [14] in early 2000’s where IoT has got its original shape. Since its inception, Auto-ID along with EPCglobal [15] targeted to architect the actual model of the IoT. These institutions have normally focused their works on the development of the Electronic Product Code™ (EPC) to necessitate and support the wide spread usage of RFID tags in modern trading network. Industry driven standard such as the EPCglobal Network™ is the outcome of this business. The primary purpose of this kind of industry standard is mainly to get well designed so as to have improvement over the object visibility particularly the location and status aware objects. This is obviously not only the single button of the shirt but from a larger point of view, IoT should not be an infrastructure where an EPC system shall persist just containing RFIDs as the only devices; these are only the tip of the burg, the complete story lies far away!

#### *uID*

Unique / Universal / Ubiquitous Identifier (uID) architecture is another alternative in IoT, the central idea of which is just the incorporation and development of

middleware aware [130] deliverables. As per my intervention, the RFID based item traceability as well as addressability is not the notion of the IoT, further it should pave more stringent tasks in case of different objects [16].

#### *NFC and Other Technologies*

As per [17], it has been perceived that the RFID still holds the driving force for IoT. Due to low cost and small size, RFID has dominated the marketing strategy since its origin. However, the authors state that huge pool of heterogeneous devices and network protocols will soon cover up the IoT. As of them, Near Field Communications (NFC), Wireless Sensor and Actuator Networks (WSAN), Wireless Identification and Sensing Platforms (WISP), and RFID together will show a new horizon towards IoT. A United Nations (UN) report has recently informed the fact that mankind is approaching towards a new decade of RFID enabled ubiquitous systems where human being shall be dwarfed by internet oriented objects as they are going to be the majority in number [18].

Appropriate IoT based modelling may solve the situation by storing and communicating in valuable ways [24]. In this context, RFID readers and tags [30] shall consist of new holistic system where each tag may be characterized by a unique identity. These forms of tags are appropriate for monitoring of cattle in far house and for personification of man. RFID reader broadcasts a signal into its periphery that activates the nearby tags to reply using its unique key. Real-time information passing may help in implementation of rigorous stratification between objects of interest [55]. RFID tag acts as an ID of concern device where it is attached in form of an adhesive sticker [31]. Smaller versions of RFID tags are being currently produced by many manufacturers. Hitachi has developed the smallest version of RFID tag as: 0.15mm x 0.15mm x 7.5µm in dimension recently.

#### *Beyond RFID*

Consortium of CASAGRAS has envisaged the concept of IoT to go beyond the concept of RFID in future. As per their published report, things could benefit human being if they are submerged with networks while allowing communicating with other digital devices in the world. CASAGRAS consortium strongly believes in two statements: (a) IoT connects physical and/or virtual objects, and (b) proliferation of IoT into traditional networking systems [21]. At this point, I apprehend their thought about IoT which shall become an institution which shall perform autonomous services by capturing data from interoperable and transparent networking media. Authors of [52] propose to integrate NFC around the posters or panels, which provide valuable information about the description, cost, and schedule about transportation system to induce digital marker with help of mobile phones by knowing the facts, such as: ticket availability, seat availability, real-time stoppage information etc. RFID enablement is a keen component of IoT invasion. Which is seconded by [57], that presents RFID based EPC network enabled Representational State Transferful (RESTful) i.e., software architecture for

distributed hypermedia systems, IoT platform architecture to validate the usage of REST in IoT domain.

## 2.2. Service Oriented Architecture

Service oriented architecture (SOA) is an approach which is used to create architecture based on the use of system services. The inbuilt SoA approach is currently being invoked in IoT domain, utilizing the concept of middleware i.e., a software layer superimposed between application and technology layer which hides the unnecessary pertinent details from the developed hence reducing the time of product development, helping the design workflow be simpler to ease the process of marketing the commercial outcomes in short time duration [37].

#### *RFID Involvement*

Researchers have developed an RFID-SN i.e., RFID enabled Sensor Network, [36] comprising of RFID tag, reader, and computer system for understanding system behavior. *Fosstrak one* has developed a novel RFID related application based on SoA management [44]. Scientists have proposed an EPC network [45] configured RFID reader based system by catering multiple data related services on its application layer e.g., aggregation, filtering, lookup and directory service, tag identifier management, and privacy, utilizing the SoA paradigm.

#### *Middleware Enablement*

A RFID based 3 layered middleware architecture relies on three associative functionalities such as: tag association, the place association, and the antenna association with user [46]. A holistic IoT architecture is proposed that consists of heterogeneous devices, Embedded Internet Systems (EIS), standard communication protocols, and SoA paradigm which utilizes the CoAP protocol and standard services by enabling the exchange of sensor data with an IoT based cloud and a private cloud, while disseminating web based human-machine interface for configuration, monitoring and visualization of structured sensor data [74]. The INOX platform [95] advocates similar approach which consists of three layers, such as: (a) Service layer – supports and contains the services using APIs, (b) Platform layer – contains necessary management and orchestration to deploy services and the virtualization technologies enriching hardware layer; and (c) Hardware layer – contains of sensors and smart objects. Article [38] advocates to reuse inbuilt techniques while composing of hardware and software together at the time of implementing a SoA in the concern setup. A common linkage between the SoA and a middleware has been proposed with an integrated architectural approach, leveraging the advantages of the SoA through enhancement of device functionality, communications, and integrated services [39]. An SoA based 5 layered IoT-middleware architecture is shown in [40], where objects do lie at the bottom and the object abstraction, service management (provides services like: dynamic discovery, status monitoring, and service configuration of

the objects. Semantic [26],[27] operations such as: QoS, lock, police and context management are also performed [42]), service composition and application layers are placed just consecutive above of each other. Furthermore a domotic infrastructure which is based on SoA oriented IoT, is developed in the literature where sensor and actuator based automatic energy consumption logic has been implied. In this perspective, the authors of [39] and [40] have used two advanced computer languages, such as: *Business Process Execution Language (BPEL)* (defined as: business processes that interact with external entities through Web Service operations (Web Service Definition Language (WSDL)) [41]) and *Jolie* (target application, specific set of objects or limited geographical scenario) to implement the SoA enabled middleware.

### 2.3. Wireless Sensor Network

Wireless Sensor Network (WSN) [137], [138] is one of

transmits information to a remote server through proxy like interface by employing web sockets.

#### Environment Monitoring

The *e-SENSE* project [47] has employed a WSN by a 3 layered logical approach to provide intelligent support to the user group by application, middleware, and connective measures [139]. *UbiSec&Sens* [48] is another example of WSN based supportive system which is similar to the *e-SENSE* but security layer is added as extra on top of it. Functional design and implementation of a complete WSN platform can be used for monitoring of long-term environmental monitoring based IoT applications [58]. The objectives of this design satisfy numerous parameters, such as: cheap structure, enablement of pool of sensors, fast deployment, longevity of device, less maintenance, and high Quality of Service. WSN based application has been devised on agriculture and forestry where IoT plays a key role [72]. An architectural design across the middleware, hardware, and network layer results in a unique WSN platform – “*Sprouts*”, which is

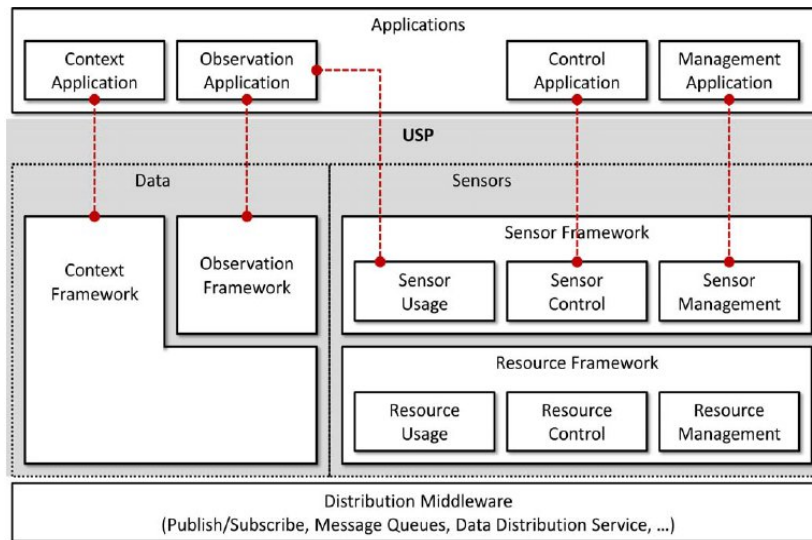


Figure 1. Stratification in the USP architecture.

the keen parts of IoT system. It consists of a finite number of sensor nodes (mote) mastered by a special purpose node (sink) by employing multi layered protocols organization [32]. Primarily energy efficiency, scalability, reliability, and robustness etc. parameters are sought when designing a WSN powered system.

#### Systems

Mostly used WSN systems do incorporate IEEE 802.15.4 protocol for provisioning *Wireless Personal Area Networks (WPAN)* for communication purpose [33]. The top layers of inbuilt protocol stacks do necessitate IPv6 addressing facility to enhance the controlling ability of vast number of nodes, while increasing the size of the payload in transmitted packets along with maximized lazy time (sleep) of nodes. It has already been demonstrated by [43], that implements embedded TCP/IP stacks into the objects e.g., TinyTCP, mIP, and IwIP, which in turn

versatile, open source, and multi-standard in nature [73]. Studies have found the challenges related to the usage of mobile phones as spontaneous gateways of WSNs in IoT systems, by showing the usage of a name – based *Future Internet Architecture (FIA)*, while delivering the information of a temperature sensor data from an Android phone directly to multiple applications via in-network multicast over the same network test bed [110].

#### Infrastructure Monitoring

IoT based dam safety application – *Tailings Dam Monitoring and Pre-alarm System – (TDMPAS)* has been developed and implemented which incorporates cloud services to accomplish with the real-time monitoring of the saturated water line, water level and dam deformation [93]. *TDMPAS* helps the engineers to acquire cautious alarm information remotely, prior to actual accident which would have been occurred. *Unified Sensing Platform (USP)* [94] has been designed as the blueprint of

what enables the seamless integration of multi-dissimilar objects and their efficient use by efficient, reusable and context aware way. Authors also presents the 3 layered (distribution middleware, *USP*, and application) *USP* architecture (see Figure 1) which stratifies publish/subscribe, message queues, data distribution services etc., through data and sensor based *USP* layer. Sensor and resource frameworks perform sensor oriented usage and control operations by efficient resource management catering contextual observation towards various top level applications.

*Agriculture*

Agriculture based IoT is envisaged by developing a prototype platform [96] that controls network information integration to study the actual situation of agricultural production while operating from a remote location. This study employs WSN as the backbone of the implementation. A recent work has proposed a 6 layered agriculture architecture that incorporates WSN as a subsidiary element to enhance multi-culture analysis, user experience, and predictive analysis [171].

*Aquaculture*

An IoT based aquaculture while providing real-time information system called “E-Nose” has been developed to pursue the information of water quality via mobile internet and WSN to the users. The system performs forecasting of the change of the trend of water quality based collected data [106].

*Distributed Sensor Network*

*Emergent Distributed Bio-Organization (EDBO)* model is conceived to harness emergent phenomena in *Artificial Distributed Systems (ADS)* [144]. EDBO nodes are represented by agents – “BioBots” which use two-way relationships to form an overlay network. Each BioBot is capable to handle a limited number of relationships to other BioBots in an autonomous environment. BioBot serves as a wrapper for abstracting, data, functionality, and services based on user queries. It facilitates the propagation of queries through the network in an autonomous manner where its behavior is based on several bio-inspired heuristic mechanisms that helps to take participate in decision making. The architecture

leverages the combination of multiple BioBot empowered by Cyber Physical System (CPS) nodes positioned in distributed locations. Users can invoke their requests upon the EDBO which is then processed by collective decisions made by the BioBot with intervention of CPS nodes.

2.4. Supply Chain Management and Industry

Supply Chain Management (SCM) may be defined as the flow of goods and services while including the movement and storage of raw materials, work-in-process inventory, and finished goods from point of origin to point of consumption.

*SoA, RFID, and NFC Integration*

SCM related visionary works [49],[54] incorporating SoA architecture have been performed where sensor based applications are made in the field of supply chain market providing the quality based perishables items in smarter way. *Metro* [172] has implemented a commodity based retail support to the customers by integrating RFID technology on top of SoA enabled SCM [50]. Research has been started to gain real-time access in SCM empowered ERP systems by involving RFID based NFC solutions [51]. An IoT based real-time sharing architecture for manufacturing industry has been proposed which includes SCM as the central building block [82]. For instance, [82] is an IoT based warehouse inventory and SCM information sharing platform system that includes: RFID based storage, position and handheld readers, RFID tags, and similar kind of devices. Supplier, manufacturer, and dealer information oriented servers communicate with loading and inventory workers through the pre-installed database system which occupies the central position in the devised system. A 3 layered (such as: perception layer, network layer, and service layer) IoT based e-commerce architecture is devised to consider active, personalized, and intelligent features to disseminate the user’s need and services [107]. Article [53] presents the impact analysis about the efficient supply chain management over the cost of perishable

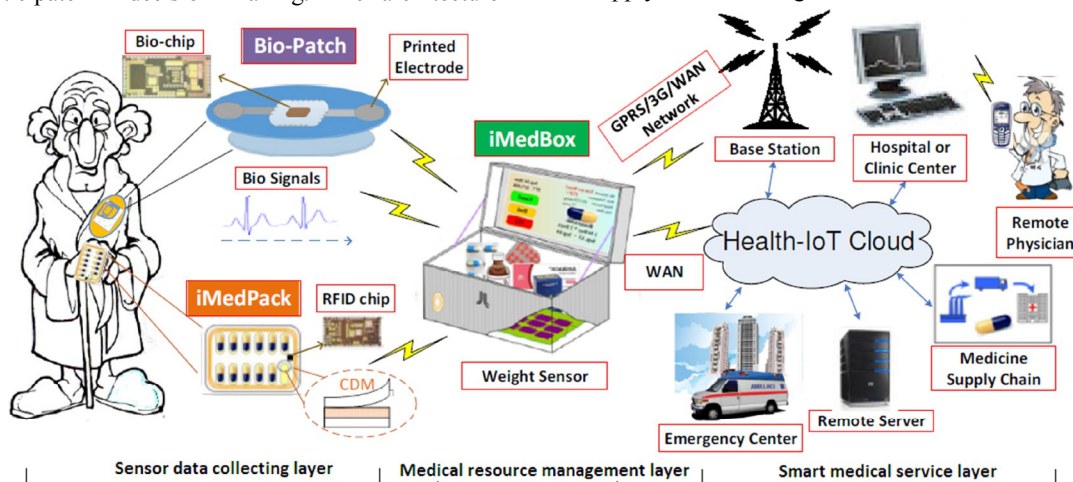


Figure 2. iHome Health-IoT platform.

goods at retail. The authors have investigated a novel way to lower down the carbon foot prints in retails by inclusion of sensor based systems into the perishables goods.

#### SCM as Service

*IoT Mashup-as-a-Service (IoTMaaS)* [89] is proposed to comply with heterogeneity of devices by obliging the model driven architecture facilitating SCM for the purpose of making harmony with stakeholders like end users, device manufacturers, and cloud computing providers [28]. EPC global object service oriented *Resource Name Service (RNS)* [98] platform provides equitable name service for the IoT employing resource locating service, auxiliary authentication service, and anti-counterfeiting service to enhance open loop information sharing between numerous IoT components in industry and related applications, especially for SCM framework. *Business Operation Support Platforms (BOSP)* have been developed which focuses on carriers that play lead role in IoT industry chain. The given 3 layered architecture is made of access layer, devices management layer, and ability formation layer; fulfilling the technicalities such as multi network, device control, application specific jobs orientation to the system [63].

## 2.5. Health Care

Recently, smart healthcare system development and dissemination has become possible by the convergence of various IoT architectures.

#### Home Health Care

Authors have proposed *iHome Health-IoT platform* (see Figure 2) for in-home health care services based on the IoT; illustrating a 3 layered open-platform based *intelligent medicine box (iMedBox)* to pursue various medical facilities integrated with sensors, devices, and communicate by means of WAN, GPRS, and/or 3G [56]. Services like *intelligent pharmaceutical packaging (iMedPack)* is enabled by RFID and actuation capability which are enabled by functional materials, flexible, and wearable *bio-medical sensor device (Bio-Patch)*. Bio-Patch takes decision when to call remote physician, emergency centre, hospital, test clinic, and supply chain medicine retailers. [2] presents a novel IoT based architecture for finding home health status by informing residents the critical notions of the house. Few frameworks monitor health of elderly people by utilizing standardized technologies is presented [4], [5].

Sebastian *et. al.* [3] elaborates the architecture of IoT in sports especially based on soccer where health care is given the most priority. Model driven tree and generalized domain model architectures are consecutively appeared in [6], and [7] to solve health and related issues in real life.

#### e-Health

A privacy preservation framework [60] provides a negotiation based architecture to find a solution for utility-privacy trade-off in IoT data management, especially in *e-health* domain. Authors also report on the

usage of the MB2 abstractions and how the implementation needs to be evolved over time to the current design to tackle with health issues [61].

#### m-Health

An amalgamated concept of *Internet of m-health Things (m-IoT)* is provided by introducing the 4G based health applications for non-invasive glucose level sensing with advanced opto-physiological assessment technique and diabetes management [71].

#### Ubiquitous Health

Investigation towards a semantic data model to store and interpret IoT data on a resource-based data accessing method (*UDA-IoT*), to acquire and process medical data ubiquitously to improve the accessibility to IoT data resources have been made [62]. The presented concept is studied around the emergency medical services scenario. Various paths for conjugation between cloud computing and IoT for efficient managing and processing of sensor data by wearable health care sensors are in practice that demonstrates IoT application on pervasive health care [68].

#### Hospital Management

IoT based architecture [80] of smart hospital is implemented to improve efficacy of present hospital information system, such as: fixed information point, inflexible networking mode, and related parameters. *Automating Design Methodology (ADM)* system for smart rehabilitation of old age population is devised by a group of researchers [99]. Such kind of ontology based platform creates a rehabilitation strategy and reconfigures the medical resources according to patients' specific requirements quickly and automatically.

#### WSN Integration

A WSN based remote identification system has been designed using the *Android Study of Internet of Things (HCIOT)* platform in "Community Health" to employ the concept of IoT together with an improved *Particle Swarm Optimization (PSO)* method to efficiently enhance physiological multi-sensors data fusion measurement precision [77].

## 2.6. Smart Society

Present world can be moulded into a well connected smart society by leveraging innovative architectural concepts of IoT. This section unfolds the research works performed to carry the world into a smart place to live through smart city, developed logistics and smart living formulations.

#### Road Condition Monitoring

Road condition monitoring and alert generation [67] has been done using the in-vehicle Smartphone as connected sensors, to an IoT platform, while providing a novel energy-efficient-phone-orientation-agnostic accelerometer analytics in phone authentic road condition mapping employing privacy concern. At the same time, the HyperCat IoT catalogue specification [90] is prescribed as the tool to adapt an IoT platform by providing an IoT hub focused on the highways industry

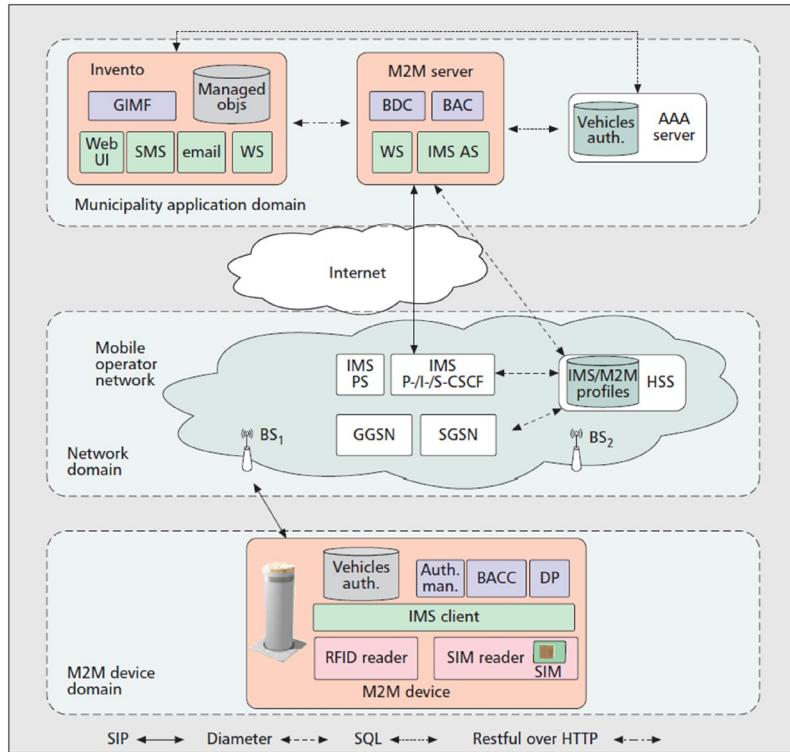


Figure 3. M2M-based distributed architecture.

called “Smart Streets” which paves a new dimension to set an interoperable IoT ecosystem in near future.

*Traffic Management*

Investigations have been conformed [59] to seek the possibility of implementing Machine-to-Machine (M2M) solutions in the field of road traffic management that integrates *IP Multimedia Subsystem (IMS)* i.e., it realizes the advanced service management platforms able to integrate different infrastructures and service components according to specific application domain requirements, based service infrastructure. Vehicular network using IoT based middleware [117] has been introduced to efficiently manage on road vehicles.

*Municipal Involvement*

A 3 layered M2M-based management platform (see Figure 3) based distributed architecture is proposed for municipality application domain [59]. Authors have truly utilized numerous terms to mention the architecture, such as: *GIMF*: Geospatial information management framework, *Web UI*: Web user interface, *BAC*: Bollard authorization component, *IMS PS*: IMS presence server, *IMS P-/I-/S-CSCF*: IMS proxy-/interrogating-/serving-call session control function, *BN*: Base node, *SGSN*: Serving GPRS support node, *BACC*: Bollard actuator control component, *WS*: Web services, *BDC*: Bollard diagnosis component, *IMS AS*: IMS application server, *HSS*: Home subscriber server, *GGSN*: Gateway GPRS support node, and *DP*: Diagnosis procedure. Device, network and application layers cumulate the overall concept behind their approach. Session Initiation Protocol (SIP) (extensions specified by the Internet Engineering

Task Force (IETF) and 3GPP IMS-related standards) controls the IMS client as the session control endpoint, and participates in session setup and management.

*Link Data for Society*

Peer focus has been kept on the communication and networking aspects of the devices that are used for sensing and measurement of the real world objects [64], [140]. The presented semantically modelled linked data architecture performs the connectivity between IoT instances of objects to the web resources which supports the publication of extensible and interoperable descriptions in the form of linked data.

*Smart City*

A smart city experiment [65] describes the deployment and experimentation architecture of the large scale IoT experimentation at the “Santander city”. The same has been presented as a three-tier architecture consisting of an *IoT device tier*, an *IoT gateway (GW) tier* and server tier to facilitate the *SmartSantander* infrastructure. The *IoT node tier* consisting of IoT devices with less resource, less processing power and less power consumable capability. The *IoT gateway node tier* links the IoT devices at the edges of the network to a core network infrastructure in a remotely programmable manner. The devices in this layer are more resource oriented but lesser than the server layer. The *server tier* hosts data repository functionality. This layer is most powerful of all three, in terms of heavy computing machineries, capability for real world data mining, knowledge engineering, and visualization in cloud infrastructure.

An evaluation framework for IoT platforms has recently been devised by using the publicly available information about the platforms' features and supporting services for smart city [79]. To enable the implementation of a generalized smart city solution, an M2M communication platform is addressed to comply with the requirements and design aspects of a reference as an enabler for Smart Cities [86]. An IoT centric novel model of smart city has been introduced [97] where a top-down architectural principle is followed to mandate the overall uniformity. A recent publication introduces a federated *Smart City Platform (SCP)* developed in the context of the ALMANAC FP7 EU project. The article further discusses on the lessons learned during their initial experimental application of the SCP to a smart waste management scenario in a European city [183]. The ALMANAC SCP is aimed at integrating IoT, capillary networks, and metro access to deliver smart services to the citizens of the subject area. The key element of the employed SCP is a "middleware" that supports functionalities, such as: semantic interoperability between heterogeneous resources, devices, services, and data management. The proposed platform is built upon a dynamic federation of private and public networks while supporting *End-to-End* security that enables the integration of services.

#### *Urban Management*

A novel IoT-LAB test bed [69] highlights the experimentations that can significantly improve the value of performance evaluation campaigns through the experiments satisfying proof-of-concept validator. The main target is to test the significance of the underlying architecture whether it is suitable for smart employability or not. *Urban Information System (UIS)* [70] is a platform for the realization of IoT based smart cities enabled with smart sensors and networking support materialized through data management and cloud based integration to form a transformational part of the existing cyber physical system while employing noise mapping in proper fashion. Researchers have developed a unified smart platform based on the "Google Map" to integrate a Geo-IoT application – Remote Digital Home Control [84].

#### *Accidental Measures*

An IoT based emergency management system has been proposed [85] which handles the catastrophic events in a specialized way.

#### *Smart Cycling*

SENSAPP [88] is designed as a prototypical cloud open-source service based application to store and exploit data collected by the IoT. The coarse-grained point of view clearly states that sensor architect and data miner software process the IoT data collected from sensor attached with a bi-cycle. The database and functional registry system cope up with notification related tasks. User can easily access and utilize the information remotely using third party software.

#### *Home Entertainment*

Television is a media of entertainment at home. A group of researchers [92] have developed a system for generating lightning fast reports from intelligent IoT

based network communication platform, correlating the real-time DSL access line and IPTV together. A RESTful Web Service having unique URI address to implement applications like: environmental perception and vehicular networks implying physical and virtual objects. IoT enabled real-time multimedia often use User Data Protocol (UDP) for transmission of data which makes huge amount of packet loss due to network congestion and channel noise. To counter this [118] has developed an IoT oriented architectural platform to solve the front end bandwidth using a novel multimedia transmission protocol over UDP. An open source solution has also been proposed [83] where Arduino based hardware platform is used for proper functioning of a smart home, which is an example of a typical cyber physical system, consists of input, output and energy monitoring activities. IoT cloud platform is also integrated with the implemented setup.

#### *Smart Logistics*

Railways are the heart of any logistics. An IoT based intelligent identification system for railway logistics has been proposed for efficient logistics management [114].

#### *Smart Tourism*

Tourism and smart city have come together with help of IoT in China as presented in a recent literature [115]. Architectural concept behind IoT based tourism is a novel approach which is artistically evolved from it.

#### *Smart Environment*

Authors [81] have observed the interaction between objects of spatial regions with pertinent mobile devices, while enabling multi-modal human to environment interaction for sake of advanced context-aware (location, identity, preferences) data and service discovery. This also implies on the filtering and consumption within both indoor and outdoor environments by fostering web as an application programming platform where external parties may create mash-ups while mixing the functionality offered by users.

#### *m-Learning*

A functional model is proposed to cater the needs of futuristic mobile-learning (m-learning) through IoT [182]. While discussing, authors envisage a technology transfer model that may be leveraged by 4 factors, such as: (a) creating optimal learning environment for m-learning, (b) providing mass resources for m-learning, (c) making individual service of m-learning, (d) enriching evaluation method. *m-learning mode based on Internet of Things(IOT-ML)* architecture is given by the authors that has the capabilities to perform several tasks like: preliminary analysis, creation of learning situation, acquiring learning resources, and evaluating the learning infrastructure by taking rigorous feedback and push/pull based learning environment.

## 2.7. Cloud Service and Management

This section provides the architectural solutions paved to encounter cloud computing and big data problems. Cloud

computing provides platform, infrastructure, and software as a service to the client systems for managing, accessing, and processing purpose ordinarily in form of pay-as-you go, or free [129], [141].

*Information Exchange Cloud*

A recently deployed IoT broker system [75] functions as an information exchange centre, relaying periodic messages from heterogeneous sensor devices to IoT clients to enhance shortest processing time (SPT) algorithm for scheduling web based IoT messages by implementing priority queue model.

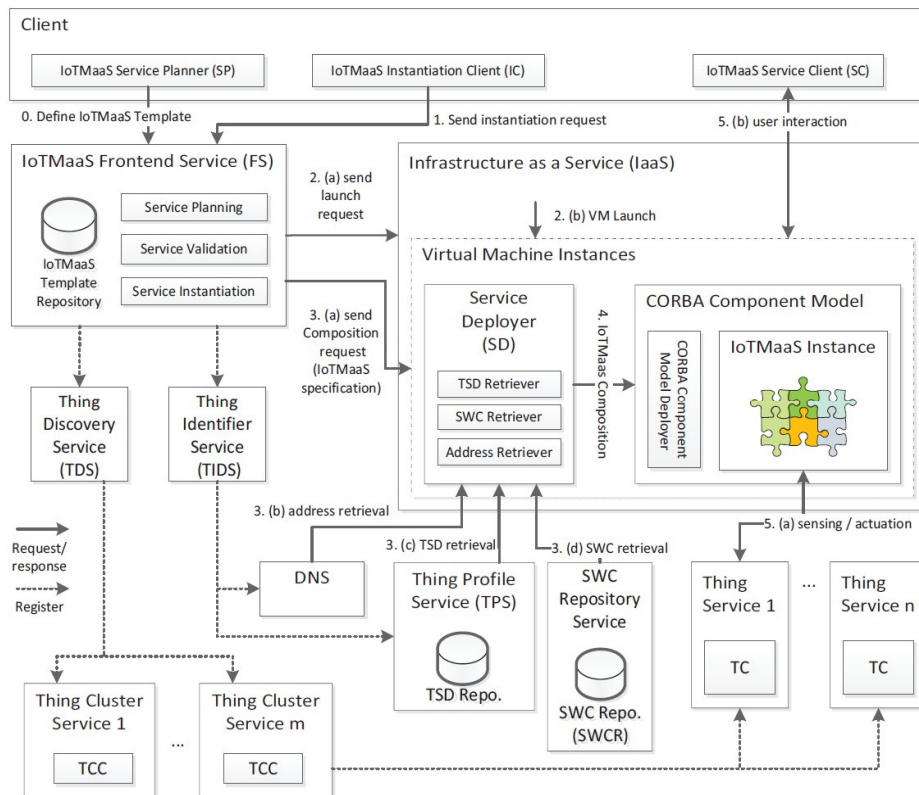
*Vehicular Cloud*

A newly proposed vehicular cloud platform provides vehicular cloud data services incorporating an intelligent parking cloud service and a vehicular data mining cloud service for vehicle warranty analysis [76].

broker, which retrieves data from the IoT repository as a contextual portfolio, which is annotated with semantic description. It depicts the interrelationship between clients, thing server, thing cluster, IoTaaS Frontend Service, IaaS, and VMI whereas device identifier services is keen to hold the request/response and registry enrolment activities. CORBA component model and service deployment are the heart of VMI which caters the sensing, SWC and TDS retrieval (see Figure 4).

*IoT as a Service*

*IoT Platform as a Service (IoTPaaS)* framework [91] provides essential platform services for IoT solutions by providing efficient delivery to the extend the virtual vertical services by leveraging core computing resources and advanced middleware [25] services on the cloud. Collected sensor data is transmitted to remote IoT cloud



**Figure 4.** An architecture to serve IoTaaS.

*Cloud Infrastructure*

The Global ICT Standardization Forum for India (GISFI) [78] while designing of IoT framework pressurized on well defined Reference Architecture (RA) for enhancing interoperability between various devices and application in multi-vendor scenario incorporating distributed cloud infrastructure.

*Context Aware Services*

A data acquisition and integration platform [87] based on IoT is proposed where context-oriented approaches have been used to collect sensor data from various sensor devices. Authors have developed to a mechanism to produce context data with help of the devised context

platforms through a gateway which is a layer of various network protocols. Retail billing and related financial processes can easily be metered with IoT PaaS by consisting a nexus of application context management which is governed by allowing data flow, monitored by event processing, data services, and tenant management. An IoT based ETSI M2M [116] architecture-compliant service platform has been developed which charters the users with the tasks of developing various M2M applications on OpenMTC (from FOKUS) to investigate the usefulness of the service platform for IoT/M2M. Unique addressing schemes and unified communication mechanism are two basic issues for any IoT structure.

*Location Aware Service*

Domain mediators and IoT resource management services are responsible for transferring of devices messages, monitoring of object status, and registering into the system. The *Mobility First Future Internet Architecture (MFFIA)* is an ideal platform for realizing pervasive computing (location awareness) in IoT. Particularly when it is necessary to build proper blocks of applications in terms of identity based routing, overloaded identities, content caching, and in network compute plane [100].

*Cognitive Service*

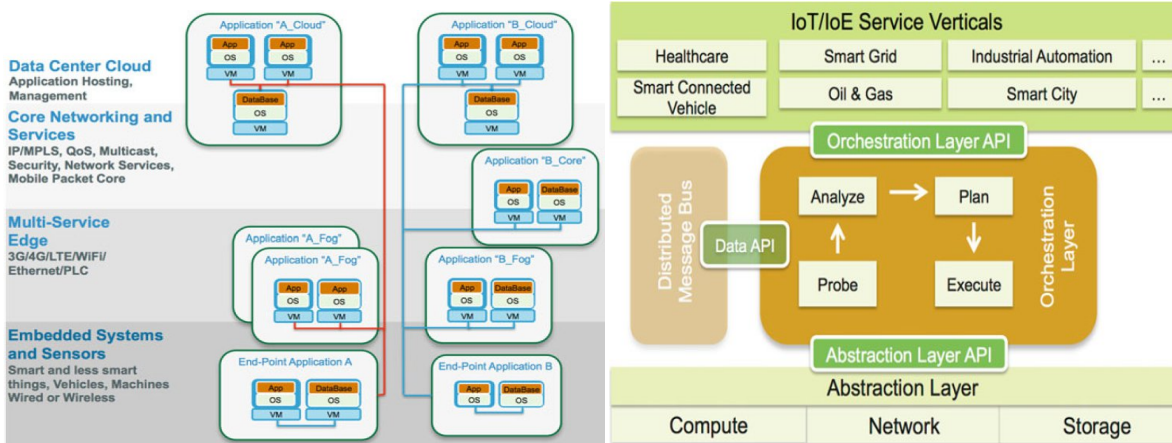
IoT based Cognitive management framework paves the ability of self-management functionality and knowledge acquisition through machine learning motivated by designating objectives, constraints, and rules [101].

*Control Service*

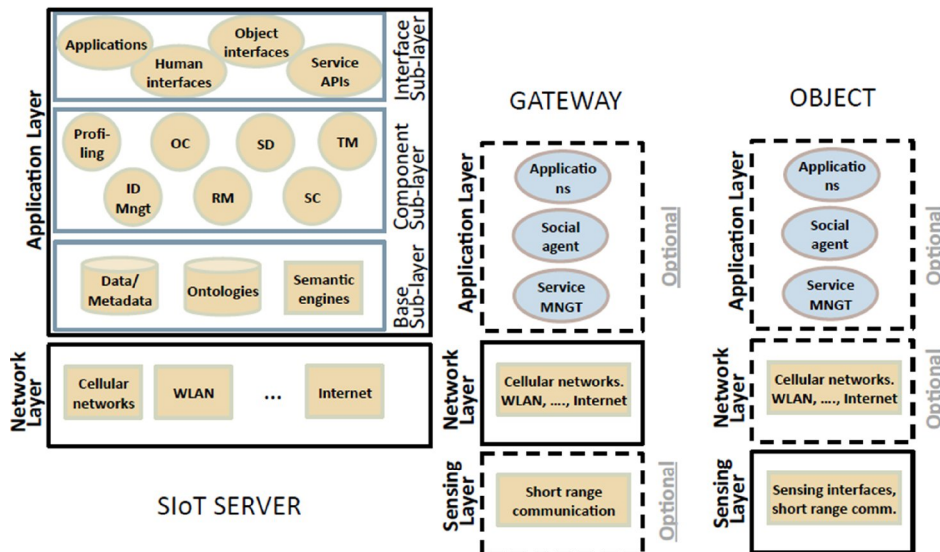
Along with condition, advent of IoT along with cheap sensor enabled devices, huge amount of heterogeneous sensor data are being generated each and every moment of time. This had led scientists to develop *Service-Controlled Networking (SCN)* [113] with cloud computing as its core, so as to pave the practical use of the collected sensor data and manage the IoT communities to search, find, and utilize their sensor data on the system dashboard.

*Sensor Discovery Service*

Recently a “*SmartLink*” [102] has been proposed that can be used to discover and configure sensors by discovering in a particular location. Further, it establishes a direct connection between the sensor hardware and cloud-based



**Figure 5.** Distributed IoT/IoE applications on the fog infrastructure (left), and Components of fog architecture (right).



**Figure 6.** Social IoT architecture, following the three layer model made of the sensing, network, and application layer.

Web2.0 enabled ubiquitous “*Living Lab*” platform necessitates rich and complex ecosystem sensor-based information sources and mobile services to the users [104].

IoT middleware using plug-in based approach. Researchers have employed “*TOSCA*” cloud service to systematically specify the components and configurations of IoT applications which can be automated in

heterogeneous IoT system environments [103]. In this context, the *Web Ecosystem of Physical Devices (EcoDiF)* platform [108] integrates heterogeneous physical devices in order to provide support to real-time data control, visualization, processing, and storage. EcoDiF uses web protocols such as: HTTP, REST, EEML [173], and EML [174] while implementing the underneath structure.

#### *Fog Computing*

Figure 5 (see Left) presents multi tenant IoT-Fog architecture [105] with suitable applications A and B. Distributed application for A has one cloud and two “Fog” [181] components. Similarly, the application for B has one cloud component, one core component and a “Fog” component. Both the parts are connected by a virtual network complying computing, storage (Virtual File System, Virtual Block/Object Store) and networking (Network Virtualization Infrastructure). Figure 5 (see Right) is the diagrammatic orientation of a 3 layered “Fog” architecture. Abstract layer is specific to the computing, networking and storage activities leveraging abstraction API which communicates with orchestration layer consisting of distributed message bus structure talks to it via probing, analyzing, planning and executing. The top most is the service layer, designed for user purposes culminating various applications, such as: smart healthcare, grid, and vehicle etc.

#### *Big Data*

IoT architectures generate different types of data in large volume at very high speed. This “Big Data” problem is suitably encountered by a recent development [66]. It proposes a data storage framework to store integrating both structured and unstructured IoT dependent data. The novel architecture combines “Hadoop” along with multiple other databases to create a distributed file repository to store and efficiently manage various types of data collected by sensors and RFID readers. This architecture technically incorporates the Big Data concept in its backbone. The 6 layered architecture places heterogeneous devices which reside at the bottom whereas database systems, such as: Hadoop, NoSQL, and Relational database cover the next higher layer. Data and file repositories are placed on top of it, leveraging multi tenant and version management, object mapping along with database connectivity. Resource configuration nodule layer configures various resource accessories and meta models. Service management layer provides service generation activities besides RESTful API and URIs [175]. The top most layer is the application layer which caters the direct user experience with the contents collected by devices and represented in knowledge oriented manner to the users.

#### *Data Filtering*

Now the problem is how to manage the data generated from large number of sensors in an IoT based system? The answer is provided by a group of researchers by means of addressing the contextual parameters along with the particular data for which the analytics if necessary [185]. Authors propose an architecture that aggregates

data filtering, transforming, and integration approach together. They present a warehouse-based data model for specifying the data needed at particular points of granularity and frequency that drive data storage and representation which is aligned with the defined *Semantic Sensor Network (SSN) Ontology* [184].

## 2.8. Social Computing

This section presents different aspects of social computing being sought by IoT.

#### *SIOT*

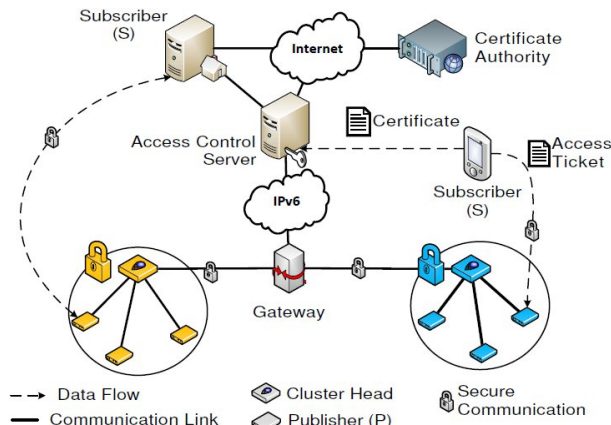
Social Internet of Things-SIoT [109], [128] is proposed to seek various functionalities, such as: registration for a new social object to the platform, managing the system creation of new relationships, and creation of devices groups. This is an innovative approach to integrated IoT with societal elements. Similar comprehension is seen through an open service framework for the Internet of Things which facilitates the IoT-related mass market by establishing a global IoT ecosystem with use of IoT devices and software [111]. [112] has designed an architecture of social network of intelligent objects-Social Internet of Things (SIoT), where objects establish social relationships among each other by enabling the capability of discovery, selection, and particular services.

#### *Societal Data Service*

An open community-oriented platform has been investigated to support *Sensor Data-as-a-Service (SDaaS)* featuring interoperability and reusability of heterogeneous sensor data and data services [119]. The concept behind virtual sensors and virtual devices are also identified to stream data continuously or discretely by scalable and context aware reconfigurable sensor data and services. A three layer architectural model for IoT is presented in [40] (see Figure 6). It consists of: (a) the sensing layer, which is devoted to the data acquisition and node collaboration in short range and local networks; (b) the network layer, which is aimed at transferring data across different networks; and (c) the application layer, where the IoT applications are deployed together with the middleware functionalities. The Component Sub-layer includes the important tools to implement the core functionality of the SIoT system. The ID management is aimed at assigning an ID used to universally identify all the possible categories of objects. The profiling is targeted at configuring manual and semi-automatic information about the objects. The Owner Control (OC) module enables the definition of the activities that can be performed by the object. The relationship management (RM) is a key module since the objects do not have the intelligence of humans in selecting the friendships. Main task of this component is to allow objects to begin, update, and terminate their relationships with other objects. The Service Discovery (SD) is aimed at finding objects that can provide the required service in the same way humans seek for friendships and for any information in the social networking services. The service

composition (SC) module enables the interaction between objects. The main potential in deploying SIoT is its capability to foster such an information retrieval. Leveraging on the object relationships, the service discovery procedure finds the desired service, which is then activated by means of this component. The Trustworthiness Management (TM) component is aimed at understanding how the information provided by other members shall be processed. Reliability is built on the basis of the behaviour of the object and is strictly related to the relationship management module. Trustworthiness can be estimated by using notions well-known in the literature which are crucial in social networks. The third sub-layer is the Interface Sub-layer that is located where the third party interfaces to objects, humans, and services are located.

## 2.9. Security



**Figure 7.** DTLS employed End-to-End security architecture.

Security issue has always been an area where network related researchers are continuously striving to get through. IoT is not out of its scope. In this section a few relevant works are presented to cope up with architectural issues in IoT based security.

### Object Security

Vucinic *et. al.* propose an architecture that leverages the security concepts both from content-centric and traditional connection-oriented approaches [145]. It relies on secure channels established by means of (D)TLS for key exchange, without inclusion of the “state” among communicating entities. *Object-based Security Architecture (OSCAR)* supports facilities such as: caching and multicast, and does not affect the radio duty-cycling operation of constrained objects while providing a mechanism to protect from replay attacks by coupling DTLS scheme with the CoAP. Authors evaluate OSCAR in two cases: (a) 802.15.4 Low Power enabled Lossy Networks (LLN), and (b) Machine-to-Machine (M2M)

communication for two different hardware platforms and MAC layers on a real test bed using the Cooja emulator [176]. The architecture has been evaluated under a smart city paradigm.

### End-to-End Security

An End-to-End two way authentication security architecture for the IoT, using the Datagram Transport Layer Security (DTLS) protocol has been evaluated [146]. The proposed security architecture (see Figure 7) is based on the most widely used public key cryptography technique (RSA), and works on top of standard low power communication stacks. Internet is connected by IPv6 in the near future, and parts of it run the 6LoWPAN. The transport layer in 6LoWPAN is UDP which can be considered unreliable; the routing layer is RPL [177], or Hydro [180]. Hydro is used for routing, because of its similarity to RPL and its availability as part of the TinyOS 2.x [178] distribution. IEEE 802.15.4 is used for the physical and MAC layer. Based on this protocol stack DTLS is chosen as the key security protocol. This places it in the application layer on top of the UDP transport layer. The prescribed architecture elaborates the underlying data and communication flow between subscriber, gateway, access control server, and internet enabled certificate authority.

### Cyber-Physical-Social Security

A cyber-physical-social based security architecture (IPM) is proposed to deal with Information, Physical, and Management security perspectives [147]. The IPM architecture is empowered by the *Unit IoT and Ubiquitous IoT (U2IoT)* architecture. U2IoT acts as the core of IPM provisioning three key supports, such as: establishing information security model to describe the mapping relations among U2IoT, security layer, and security requirement in which social layer and additional intelligence and compatibility properties are infused into IPM; referring physical security to the external context and inherent infrastructure are inspired by artificial immune algorithms; and suggesting recommended security strategies for social management control.

### Hierarchical Security

Authors propose hierarchical security architecture to protect against inherent openness, heterogeneity, and terminal vulnerability. The proposed architecture aims to improve the efficiency, reliability, and controllability of the entire security system. Authors investigate several types of attacks and threats that may diffuse the architecture. To oppose the vulnerability, a coarse-grained security cell is designed that along with a refined secure subject that protects the IoT enabled system in form of information, data, control, and behavior. The 3-layered architecture devises a vertical division that narrows down the complexity of the cross-layer security interaction, and the transverse division based on data flow while clearing the processing logic of the security mechanism [148].

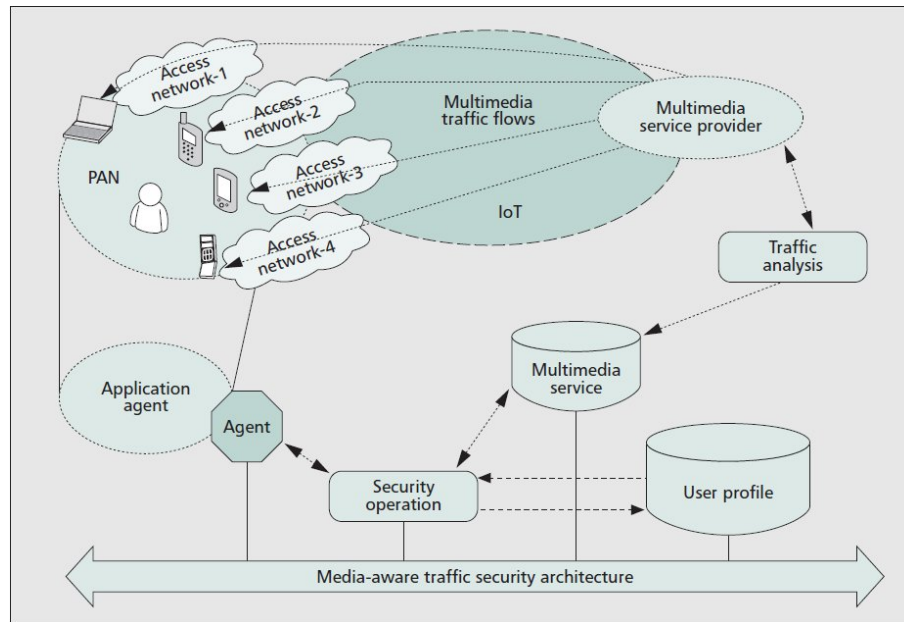


Figure 8. MTSA architecture.

#### Multimedia Traffic Security

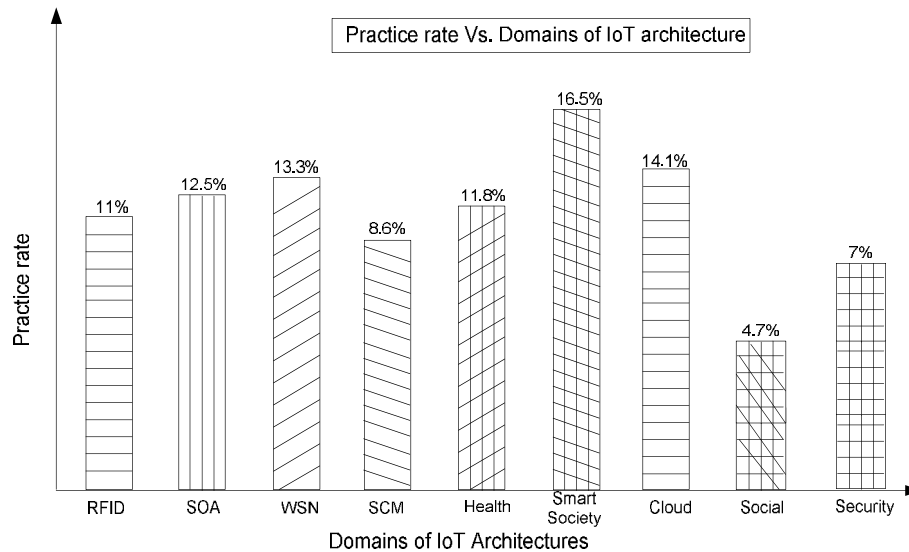
An efficient *Media-aware Traffic Security Architecture* (MTSA) is proposed that facilitates various multimedia applications in the Internet of Things [149]. MTSA sacrifices unconditional secrecy to facilitate a normalized multimedia security solution for all genres of sensors in IoT. In particular, MTSA employs a visual secrecy measure which degrades proportionally to the number of shares in a possession of an eavesdropper. MTSA is enabled with perceived multimedia distortion [150], [151] techniques. The MTSA reduces the complexity of multimedia computations and decreases the size of the shares (see Figure 8). MTSA is inherited from a context-aware multimedia service based security framework [152].

#### Light Wight Security

A recent article presents comprehensive and lightweight security architecture to secure the IoT throughout the lifecycle of a device – “HIMMO”. HIMMO relies on the lightweight scheme as its building block. It is not only efficient resource-wise, but also enables advanced IoT protocols and deployments. HIMMO based security architecture can be easily integrated in existing communication protocols such as IEEE 802.15.4, or OMA LWM2M while providing a number of advantages such as: performance and operation. HIMMO is featured by a few advancements such as: full collusion resistance, device and back-end authentication and verification, pairwise key agreement, support for multiple TTPs and key escrow, or protection against DoS attacks [153].

#### 2.10. Observation

In earlier sub sections, domain specific architectural works have been discussed. While reviewing different areas of implementations, it is found that smart city related practices are dominant over other segments. Figure 9 illustrates the graphical representation of the rate of practice versus domains of IoT architectures. On the basis of 127 research papers included in this survey, the graph has been plotted; where RFID and health related architectural studies are getting equally popular around at 11%. SoA based architectural research is gradually coming forwards faster than RFID and health sectors, making its mark at 12.5%. WSN being a common area of practice has secured 13.3% among all. As I told in earlier section, smart city and related applications are gaining popularity in recent days. The result shows that 16.5% of overall research has been performed collectively towards the development for in smart society only. Indeed the smart society approach touches the highest point on the plot. Cloud computing based research and practices seem to be just beyond of WSN i.e., 14%. SCM and industrial approaches are subsequently marking its position in IoT specific world. SCM secures 8.6% on the graph. Security and privacy issues are very important by its own virtue; hence researchers are coming up with novel architectural concepts to facilitate the IoT. 7% investigations are made on its behalf. Social computing based research is still at nascent stage. Very few and specific explorations have been made on this ground. It has attained only 4.7%. The graphical representation of current trends in IoT based architectural research shows that more facilitations to be incurred in several domains, such as: e-learning, defense [170], rural management, and robotics [169] etc. Are yet



**Figure 9.** Practice chart of domains of IoT.

to be touched (not shown on the graph). Table 1 (see Section 3) combines all discussed architectures in earlier section as compact form. The representation of this table conglomerates different types of architectural frameworks as per their sub-domain. This will help the researchers to go into the depth of what is described in this paper as the sub-domains or domains as a whole, that need to be searched and paved in future.

### 3. Open research issues and Future Direction

Although the architectures described in earlier section make IoT concept practically feasible, a large research effort is still required in this direction. In this section, I firstly review the technical problems associated with IoT architectures. Later, I present specialized Io-\* (Internet of \*) versions of different required applications, where '\*' is any suitable application domain.

#### 3.1. Technical Challenges

It is broadly accepted that the IoT technologies and applications are still in their infancy [134]. There are still many research challenges for industrial use such as technology, standardization, security and privacy [135]. Future efforts are needed to address these challenges and examine the characteristics of different industries to ensure a good fit of IoT devices in the human centric environments. A sufficient understanding of industrial characteristics and requirements on factors such as cost, security, privacy, and risk are indeed required before the IoT will be widely accepted and deployed in all the domains [23]. Let discuss a few problems in this regard:

- (i) Design of Service oriented Architecture (SoA) for IoT is a big challenge where service-based objects may face problems from performance and cost related issues. SoA needs to handle a large number of devices connected to the system which phrases scalability issues. At this moment, challenges like: data transfer, processing, and management become a matter of burden over-headed by service provisioning [120].
- (ii) IoT is a very complicated heterogeneous network platform. This, in turn enhances the complexity among various types devices through various communication technologies showing the rude behavior of network to be fraudulent, delayed, and non-standardized. [121] has clearly pointed out the management of connected objects by facilitating through collaborative work between different things e.g., hardware components and/or software services, and the administering them after providing addressing, identification, and optimization at the architectural and protocol levels is a serious research challenge.
- (iii) If we look from the viewpoint of network services, it seems clear that there is always a lack of a Service Description Language (SDL). Otherwise, it would make the service development, deployment, and resource integration difficult by extending the product dissemination time causing loss in market. Hence, a commonly accepted SDL should be constructed so as the powerful service discovery methods and object naming services be implemented [120]. Novel SDL may be developed to cope up wit product dissemination after validating the requisite SDL specific architecture.
- (iv) As of now, IoT is degenerated on a traditional network oriented ICT environment. It is always

Table 1. Conglomeration of domain specific architectures

Domains	Architecture References						
RFID [34]	EPC [14][15] [133]	uID [16][130]	NFC and Other Technologies [17][18][24][30][31][55]		Beyond RFID [21][52][57]		
Service Oriented Architecture [37]	RFID Involvement [36][44][45]	Middleware Enablement [26][27][38][39][40][41][42][46][74][95]					
Wireless Sensor Network [42][137][138]	Systems [33] [43]	Environment Monitoring [47][48][58][72] [73] [110][139]	Infrastructure Monitoring [93][94]	Agriculture [96][171]	Aquaculture [106]	Distributed Sensor Network [144]	
Supply Chain Management and Industry	SoA, RFID, and NFC Integration [49][50][51][53] [54][82][107][172]		SCM as Service [28][63][89][98]				
Health Care	Home Health Care [2][3][4][5][6][7][56]	e-Health [60][61]	m-Health [71]	Ubiquitous Health [62][68]	Hospital Management [80][99]	WSN Integration [77]	
Smart Society	Road Condition Monitoring [67][90]	Traffic Management [59][117]	Municipal Involvement [59]	Link data for Society [64][140]	Smart City [65][79] [86][97] [183]	Urban Management [69][70][84]	
	Accidental Measures [85]	Smart Cycling [88]	Home Entertainment [83][92][118]	Smart Logistics [114]	Smart Tourism [115]	Smart Environ ment[81]	m-Learning [182]
Cloud Service and Management [129][141]	Information Exchange Cloud [75]	Vehicular Cloud [76]		Cloud Infrastructure [78]	Context Aware Services [87]		
	Location Aware Service [100]	IoT as a Service [25] [91][116]	Cognitive Service[101][104]		Control Service [113]		
	Sensor Discovery Service [102] [103][108][173][174]	Fog Computing [105][181]	Big Data [66][175]		Data Filtering [184][185]		
Social Computing	SIOT [109][111] [112][128]			Societal Data Service [40][119]			
Security	Object Security [145][176]	End-to-End Security [146][177][178][180]		Cyber-Physical-Social Security [147]	Hierarchical Security [148]		
	Multimedia Traffic Security [149][150][151][152]			Light Wight Security [153]			

affected by whatever connected to it. Here, a need of unified information infrastructure is to be sought. Huge number of connected devices shall produce real-time data flow which must be governed by high band width frequency path. Hence, a uniform architectural base to be created to cater the infrastructure needs sophisticatedly.

- (v) The originated data may be too much large in size that current database management system may not handle in real-time manner. Proper solutions need to be idealized. IoT based data would be generated in a rapid speed. The collected data at receivers end shall be stored in efficient way which current RAID technology is incapable of. Here, an IoT based data service centric architecture need to be revised to handle this problem.
- (vi) Different devices attached to the IoT will put down data of variety in type, size and formation. These variations should be occupied with the futuristic technology which may involve multi-varied architectural notion for its ideal indentation. Researcher should come forward with novel Big IoT Data specific design where data can efficiently handled.
- (vii) Data is a raw fact that generally does not conform to non-relevant handouts. Here in case of IoT, data play the massive role in decision making. The value of data is only achievable after filtering process is performed on the pool of data. This meaningful information can only be obtained by orientation of mining, analysis, and understand it. Big data problem is sufficient for handling similar regression. Relevant architectural framework is in evident that can hale

data mining, analytics, and hence decision making services. Big Data approach could be aggregated herewith.

- (viii) In addition, industries must seek the challenges of hardware software coexistence around IoT. Variety of devices combined with variety of communication protocols through TCP/IP or advanced software stacks would surely manipulate web services which shall be deployed by various middleware solutions [122]. Particular architecture leveraging the facilitation of heterogeneous protocols shall be devised.
- (ix) The IoT is envisaged to include an incredibly high number of nodes. All the attached devices and data shall be retrievable; here in such context, the unique identity is a must for efficient point-to-point network configuration. IPv4 protocol identifies each node through a 4-byte address. As it is well known that the availability of IPv4 numbered addresses are decreasing rapidly by reaching zero in next few years, new addressing policies shall be countered where IPv6 is a strong contender. This is an area where utmost care is needed to pursue device naming and identification capability, where appropriateness of architectural proficiency is a must.
- (x) Standardization is another clot which may precisely be operated for growth of IoT. Standardization in IoT signifies to lower down the initial barriers for the service providers and active users, improvising the interoperability issues between different applications or systems and to perceive better competition among the developed products or services in the application level. Security standards, communication standards and identification standards need to be evolved with the spread of IoT technologies while designing emerging technologies at a horizontal equivalence. In addition, fellow researchers shall document industry-specific guidelines and specify required architectural standards for efficient implementation of IoT.
- (xi) From the viewpoint of service, lack of a commonly accepted service description language makes the service development and integration of resources of physical objects into value-added services difficult. The developed services could be incompatible with different communication and implementation environments [135]. In addition, powerful service discovery methods and object naming services need to be developed to spread the IoT technology [136]. Scientists should pave novel architectures to cater with these difficulties.
- (xii) The widespread applicability of IoT and associated technologies shall largely depend on the network cum information security and data privacy protection. Being highly complex and heterogeneous in nature, IoT always faces severe security and privacy threats. Deployment, mobility, and complexity are the main challenges that restrict IoT to be damn safe [123]. As per [123][124][125], privacy protection in IoT environment is more

vulnerable than in traditional ICT network due to the large number of presences of attack vectors on IoT entities. Say for an example, IoT based health care monitoring system will collect patient's data (e.g., heart rate, pulse, body temperature, respiration etc.) and later on send the information directly to the doctor's office or hospital via network. As the time of data transfer over the network, if patient's data is stolen or misplaced serious risk may arise which can cause even death to the user. In such situation, it is noticed that most of the architectures do not include privacy, and security aspects into the respective concept which is drawback that needs to be clarified. Though, existing network security technologies enable IoT to get protected from such threats, more work still needs to be considered. A reliable, effective and powerful security protection mechanism for IoT is on the top most priority at the moment. Authors [126] have depicted following topics where research should be carried on: (a) Definition of security and privacy from the social, legal, and culture point of view, (b) trust and reputation management, (c) end-to-end encryption, (d) privacy of communication and user data, and (e) security on services and applications. It is further understood that although existing network security technologies provide a basis for privacy and security in IoT, more work still need to be performed. A reliable security protection mechanism for IoT needs to be researched from the following aspects: (a) The definition of security and privacy from the viewpoint of social, legal and culture; (b) trust and reputation mechanism; (c) communication security such as end-to-end encryption; (d) privacy of communication and user data; (e) security on services and applications [131].

### 3.2. Direction Towards Io<\*>

This section prescribes typical application specific approaches, which is absent in the aforementioned review work or have not been touched at all by the research communities. The Io<\*> refers to Internet of Any architecture (where, '\*' is normally assumed to be 'all' in computing). Architectures are continuously gaining importance and soon it will hold the underneath foundation of IoT. From a viewpoint of an architect/developer, the first and foremost job while designing a novel philosophy, far ahead of implementing in practice, is to establish a fundamental model which shows the layered components and how they are connected to each other. Research should be made possible to elaborate new thing based framework to complement the following particulars such as: mining, sports, tourism, governance, social, robotics, automation, and defense. As IoT is still in its nascent stage, we should be motivated to Io<\*> where any architecture could be well suited. Smart healthcare, domotics, transportation,

environment and agriculture are currently being sought in terms of IoT. Academics are constantly in the process to successfully cope up with the necessary platforms to solve these problems in near future. Io<\*> concept shall revolutionize the way we see through the IoT technologies by combing the untouched areas with the cumulated ones. This shall hold the horizontal, vertical, and diagonal crisscross among all the core components of the IoT to the generalized applications. Io<\*> is completely a hypothetical concept that must be tracked on. Analog, digital, and hybrid objects shall be the ‘things’ part. Not only solid but also liquid, semi-liquid, and crystallized type of materials may be the part of it. Integrated chips (IC), system on lab, lab on chip, FPGA, ASIC, and flexible electronics elements shall miniaturize the distance between digital and pure digital mechanism. Standard OSI network model is to be revisited for advanced layer based Io<\*>. All the network protocols shall appropriately be utilized on its layers. 6LoWPAN [22], CoAP [154], MQTT [155], websockets [156], XMPP [157], SOAP[158], RESTful [159], and IPv6 [160] are to be integrated in a novel way where scripted web based pages would talk to the <\*> portion by leveraging NoSQL [161], SPARQL [162], Graph database [163], parallel database [164], Hadoop [165], Hbase [166], RDF [167], OWL [168] oriented set ups. On top of it, data analytics, risk analysis, graphical visualization, resource management, service coordinator, task manager, APP based Plug-in enabler, API moderator, storage monitor, and predictive analyzer shall be mounted to improvise Io<\*>-as-a-Service (Io<\*>aaS). Unlimited applications to be roofed up the layer to mitigate the user experience to a new height. Smart transportation, logistics, assisted driving, mobile ticketing, environment monitoring, augmented maps, health track, data collection, identification and sensing, comfortable home, smart plant, intelligent museum, social networking, theft monitoring, loss apprehension, historical queries, smart taxi, smart city, governance, and enhanced game environment etc. shall be cherished by human being. Mining sites are to be covered up by Io<\*>; besides, sports, travel and tourism, and defence mechanisms are to be connected by. AES, 3-DES, RSA, and SHA-3 algorithms need to be revised to get fitted into the resource constrained <\*>. Multimedia may be lid onto Io<\*> by apprehending streaming algorithms where as discrete messages be appended after payloads of transmitted packets. “Sensor Model Language” (SensorML) shall be revisited to provide a robust and semantically-tied means of defining processes and processing components, associated with the pre-measurement and post-measurement transformation of observations [127]. The main objective of SensorML will be to enable the interoperability by using ontologies and semantic mediation. This could be done at the syntactic level and semantic level consecutively; resulting sensors and processes be better understood, utilized, and shared by machines, in complex workflows, and between intelligent sensor web nodes respectively. As of now most of the digital and hybrid devices of traditional network

come along contemporary “Operating Systems” (OS). Very few OS are released in market for IoT invasion. IoT operating systems such as Contiki-OS [179], RIOT-OS are the most prevalent versions available in the market, though they lack in hardware interoperability and semantic means. In this perspective, more work shall be carried to develop new variants of universal IoT-OS. Actuator layer may be another valuable part of Io<\*> which has never been seen in any literature till date. In relation to the sensor, actuators are going to increase in exponential rate. The need of a central monitoring and controlling environment is required, Io<\*> shall occupy the gap.

#### 4. Conclusion

The Internet has proved its existence in our lives, from interactions at a virtual level to social relationships. The IoT has added a new potential into internet by enabling communications between objects and human, making a smarter and intelligent planet. This has led the vision of “*anytime, anywhere, anyway, anything*” communications practically in true sense.

To this end, I observe that the IoT should be considered as the core part of the existing internet relying on its future direction, which is obvious to be exceptionally different from the current phase of internet what we see and use in our lives. Hence, the architectural concept comes in the picture. Architecture is a framework of technology enabled things to interconnect and interact with similar or dissimilar objects by imposing human to be a layer on it. In fact, it is clear that the current IoT paradigm, which is supportive towards M2M communications, is now getting limited by a number of factors.

New formulations are inevitable for sustenance of IoT which is a strong notation for the researcher to come up with. From the above survey, I found that publish/subscribe based IoT is flourishing now a days and being successively used in many applications. In this perspective, I should present the fact that people are solemnizing their thoughts in terms of vertical silos of architectures. If this trend continues for next few years, it is mandated that IoT may not achieve its goal related to flexibility, interoperability, concurrency, scalability, and addressability issues. Crowded sourcing may be incorporated into the architectural conciseness. Defense, military, intelligence services, robotics etc. are still not been included with IoT. Tourism, education, multimedia, governance, social aware, and context aware IoT architectures have not been functional at all. Vertical silos must be coincided with the horizontal perspective for affective measures of the IoT.

In this article, I firstly introduce the background and definition of IoT and then discuss the fundamental of IoT architecture. Next, I introduce few domains where IoT based research works have been done in recent times. Afterwards, I analyze the research challenges while presenting a graph where attainment according to research

based motives of the surveyed domains is posted. I have also shown the Io<\*> concept which may be taken as in theoretical nomenclature and external inputs may be put into it. Different from other IoT survey papers, a main contribution of this review paper is that it focuses on area specific architectures of IoT applications and highlights the challenges and possible research opportunities for future IoT researchers who would work in architectural as well as in IoT as a whole.

## References

- [1] <http://www.gartner.com/newsroom/id/2905717> [Accessed on 21 June, 2015]
- [2] Sebastian, S. & Ray, P. P. (2015) Development of IoT Invasive Architecture for Complying with Health of Home. *In Proceedings of I3CS*, Shillong, 79–83.
- [3] Sebastian S. & Ray, P. P. (2015) When Soccer Gets Connected to Internet, *In Proceedings of I3CS*, Shillong, 84–88.
- [4] Ray, P. P. (2014) Home Health Hub Internet of Things (H3IoT): An Architectural Framework for Monitoring Health of Elderly People, *In Proceedings of IEEE ICSEMR*, Chennai.
- [5] Ray, P. P. (2014) Internet of Things based Physical Activity Monitoring (PAMIoT): An Architectural Framework to Monitor Human Physical Activity, *In Proceedings of CALCON*, Kolkata, 32–34.
- [6] Ray, P. P., Sharma, A. & Rai, R. (2013) MDTRM: Abstraction to Model Driven Tree Reference Model of Internet of Things, *In Proceedings of National Conference on Applied Electronics (NCAE)*, AIT Kolkata, 61–64.
- [7] Rai, R., Lepcha, C., Ray, P. P. & Chettri, P. (2013) GDMA: Generalized Domain Model Architecture of Internet of Things, *In Proceedings of National Conference on Applied Electronics (NCAE)*, AIT Kolkata, 65–68.
- [8] Atzori, L., Iera, A., Morabito, G., (2010) The Internet of Things: A survey, *Computer Networks* 54(15): 2787–2805.
- [9] Gubbia, J., Buyya, R., Marusica, B. S., Palaniswamia, M., (2013) Internet of Things (IoT): A vision, architectural elements, and future directions, *Future Generation Computer Systems* 29(7): 1645–1660.
- [10] Miorandi, D., Sicari, S., & Chlamtac, I., (2012) Internet of things: Vision, applications and research challenges, *Ad Hoc Networks* 10(7): 1497–1516.
- [11] Giusto, D., Iera, A., Morabito, G., Atzori L. [ed.], (2010) *The Internet of Things*, Springer.
- [12] National Intelligence Council, Disruptive Civil Technologies – Six Technologies with Potential Impacts on US Interests Out to 2025 – Conference Report CR 2008–07,(2008), [http://www.dni.gov/nic/NIC\\_home.html](http://www.dni.gov/nic/NIC_home.html).
- [13] Networked Enterprise & RFID & Micro & Nanosystems, (2008), *In Proceedings of Co-operation with the Working Group RFID of the ETP EPOSS, Internet of Things in 2020, Roadmap for the Future*.
- [14] Auto-Id Labs, <<http://www.autoidlabs.org/>>.
- [15] The EPCglobal Architecture Framework, (2009) EPCglobal Final Version 1.3, <[www.epcglobalinc.org](http://www.epcglobalinc.org)>.
- [16] Sakamura, K., (2006) Challenges in the age of ubiquitous computing: a case study of T-engine – an open development platform for embedded systems, *In Proceedings of ICSE*, Shanghai, China.
- [17] Presser, M., Gluhak, A., The Internet of Things: Connecting the Real World with the Digital World, (2009), *EURESCOM mess@ge – The Magazine for Telecom Insiders 2*. <<http://www.eurescom.eu/message>>.
- [18] Botterman, M., (2009), For the European Commission Information Society and Media Directorate General, Networked Enterprise & RFID Unit – D4, Internet of Things: An Early Reality of the Future Internet, *Report of the Internet of Things Workshop*, Prague, Czech Republic.
- [19] Sterling, B., (2005), Shaping Things – Mediawork Pamphlets, *The MIT Press*.
- [20] ITU Internet Reports, (2005), The Internet of Things.
- [21] Dunkels, A., Vasseur, J. P., (2008), IP for Smart Objects, Internet Protocol for Smart Objects (IPSO) Alliance, *White Paper*, <<http://www.ipso-alliance.org>>.
- [22] Hui, J., Culler, D., Chakrabarti, S., (2009), 6LoWPAN: Incorporating IEEE 802.15.4 Into the IP Architecture – Internet Protocol for Smart Objects (IPSO) Alliance, *White Paper*, <<http://www.ipso-alliance.org>>.
- [23] Gershenfeld, N., Krikorian, R., Cohen, D., The internet of things, *Scientific American* 291(4): 76–81.
- [24] Toma, I., Simperl, E., Hench, G., (2009), A joint roadmap for semantic technologies and the internet of things, *In Proceedings of the Third STI Road mapping Workshop*, Crete, Greece.
- [25] Katasonov, A., Kaykova, O., Khriyenko, O., Nikitin, S., Terziyan, V., (2008), Smart semantic middleware for the internet of things, *In Proceedings of Fifth International Conference on Informatics in Control, Automation and Robotics*, Funchal, Madeira, Portugal.
- [26] Wahlster, W., (2008), Web 3.0: Semantic Technologies for the Internet of Services and of Things, *Lecture at the 2008 Dresden Future Forum*.
- [27] Vázquez, I., (2009), Social Devices: Semantic Technology for the Internet of Things, *Week@ESI*, Zamudio, Spain.
- [28] Guinard, D., Vlad, T., (2009), Towards the web of things: web mashups for embedded devices, *In Proceedings of the International World Wide Web Conference*, Madrid.
- [29] Srivastava, L., (2006), Pervasive, ambient, ubiquitous: the magic of radio, *In Proceedings of European Commission Conference “From RFID to the Internet of Things”*, Bruxelles, Belgium.
- [30] Finkenzeller, K., (2003) *RFID Handbook*, Wiley.
- [31] Jules, A., (2006), RFID security and privacy: a research survey, *IEEE Journal on Selected Areas in Communications* 24(2): 381–394.
- [32] Akyildiz, I.F., Su, W., Sankarasubramaniam, Y., Cayirci, E., (2002), Wireless sensor networks: a survey, *Computer Networks* 38 (4): 393– 422.
- [33] IEEE 802.15, <<http://ieee802.org/15/>>.
- [34] Marrocco, G., Occhiuzzi, C., Amato, F., (2009), Sensor-oriented passive RFID, *In Proceedings of TIWDC*, Pula, Italy.
- [35] Intel research, <<http://seattle.intel-research.net/wisp/>>.
- [36] Buettner, M., Greenstein, B., Sample, A., Smith, J. R., Wetherall, D., (2008), Revisiting smart dust with RFID sensor networks, *In Proceedings of ACM HotNets*, Calgary, Canada.
- [37] Deugd, D. S., Carroll, R., Kelly, K., Millett, B., Ricker, J., SODA: service oriented device architecture, *IEEE Pervasive Computing* 5 (3): 94–96.
- [38] Pasley, J., How BPEL and SOA are changing web services development, *IEEE Internet Computing* 9 (3): 60–67.
- [39] Spiess, P., Karnouskos, S., Guinard, D., Savio, D., Baecker, O., Souza, L., Trifa, V., (2009), SOA-based

- integration of the internet of things in enterprise services, *In Proceedings of IEEE ICWS*, Los Angeles, Ca, USA.
- [40] Buckl, C., Sommer, S., Scholz, A., Knoll, A., Kemper, A., Heuer, J., Schmitt, A., (2009), Services to the field: an approach for resource constrained sensor/actor networks, *In Proceedings of WAINA*, Bradford, United Kingdom.
- [41] OASIS, Web Services Business Process Execution Language Version 2.0, Working Draft, <<http://docs.oasis-open.org/wsbpel/2.0/wsbpel-specification-draft.pdf>>.
- [42] Hydra Middleware Project, FP6 European Project, <<http://www.hydramiddleware.eu>>.
- [43] Duquenooy, S., Grimaud, G., Vandewalle, J. J., (2009), The web of things: interconnecting devices with high usability and performance, *In Proceedings of ICCESS*, HangZhou, Zhejiang, China.
- [44] Foss track, <<http://www.fosstrak.org>>.
- [45] Floerkemeier, C., Roduner, C., Lampe, M., RFID application development with the Accada middleware platform, *IEEE System Journal* 1 (2): 82–94.
- [46] Welbourne, E., Battle, L., Cole, G., Gould, K., Rector, K., Raymer, S., Balazinska, M., Borriello, G., Building the internet of things using RFID: the RFID ecosystem experience, *IEEE Internet Computing* 13 (3) (2009) 48–55.
- [47] e-Sense, <<http://www.ist-e-sense.org>>.
- [48] Ubi e-Sense, <<http://www.ist-ubiseconsens.org>>.
- [49] Yuan, R., Shumin, L., Baogang, Y., (2007), Value Chain Oriented RFID System Framework and Enterprise Application, *Science Press*, Beijing.
- [50] METRO Group Future Store Initiative, <<http://www.futurestore.org>>.
- [51] Karpischek, S., Michahelles, F., Resatsch, F., Fleisch, E., (2009), Mobile sales assistant – an NFC-based product information system for retailers, *In Proceedings of the First International Workshop on Near Field Communications*, Hagenberg, Austria.
- [52] Broll, G., Rukzio, E., Paolucci, M., Wagner, M., Schmidt, A., Hussmann, H., (2009), PERCI: pervasive service interaction with the internet of things, *IEEE Internet Computing* 13 (6): 74–81.
- [53] Ilic, A., Staake, T., Fleisch, E., (2009), Using sensor information to reduce the carbon footprint of perishable goods, *IEEE Pervasive Computing* 8 (1): 22–29.
- [54] Dada, A., Thiesse, F., (2008), Sensor applications in the supply chain: the example of quality-based issuing of perishables, *In Proceedings of Internet of Things*, Zurich, Switzerland.
- [55] Kos, A., Pristov, D., Sedlar, U., Sterle, J., Volk, M., Vidonja, T., Bajec, M., Bokal, D., Bešter, J., (2012), Open and Scalable IoT Platform and Its Applications for Real Time Access Line Monitoring and Alarm Correlation, *Internet of Things, Smart Spaces, and Next Generation Networking Lecture Notes in Computer Science* 7469: 27–38.
- [56] Yang, G., Li, X., Mäntysalo, M., Zhou, X., Pang, Z., Xu, L. D., Walter, S. K., Chen, Q., Zheng, L., (2014), A Health-IoT Platform Based on the Integration of Intelligent Packaging, Unobtrusive Bio-Sensor and Intelligent Medicine Box, *IEEE Transactions on Industrial Informatics* 10(4): 2180 – 2191.
- [57] Zhangm, X., Wen, Z., Yuexin, W., Zou, J., (2011), The Implementation and Application of the Internet of Things Platform based on the REST Architecture, *In Proceedings of International Conference on Business Management and Electronic Information*, 43–45.
- [58] Lazarescu, M. T., (2013), Design of a WSN Platform for Long-Term Environmental Monitoring for IoT Applications, *IEEE Journal of Emerging and Selected Topics In Circuits and Systems* 3: (45–54).
- [59] Foschini, L., Taleb, T., Corradi, A., Bottazzi, D., (2011), M2M-based metropolitan platform for IMS-enabled road traffic management in IoT, *IEEE Communications Magazine* 49(11): 50 – 57.
- [60] Ukil, A., Bandyopadhyay, S., Joseph, J., Banahatti, V., Lodha, S., (2012), Negotiation-based Privacy Preservation Scheme in Internet of Things Platform, *In Proceedings of International Conference on Security of Internet of Things*, 75–84.
- [61] Blackstock, M., Kaviani, N., Lea, R., Friday, A., (2010), MAGIC Broker 2: An open and extensible platform for the Internet of Things, *In Proceedings of Internet of Things* 1–8.
- [62] Boyi, X., Xu, L. D., Cai, H., Xie, C., Hu, J., Bu, F., (2014), Ubiquitous Data Accessing Method in IoT-Based Information System for Emergency Medical Services, *IEEE Transactions on Industrial Informatics* 2(10): 1578 – 1586.
- [63] Xiaocong, Q., Jidong, Z., (2010), Study on the structure of “Internet of Things(IOT)” business operation support platform, *In Proceedings of 12th IEEE International Conference on Communication Technology (ICCT)*, 1068 – 1071.
- [64] De, S., Elsaleh, T., Barnaghi, P., Meissner, S., (2012), An Internet of Things Platform for Real-World and Digital Objects, *Scalable Computing: Practice and Experience* 13(1): 45–57.
- [65] Sanchezza, L., Muñozza, L., Galachea J. A., Sotresa, P., Juan, R., Gutierrezza, V., Ramdhanyb, R., Gluhakc, A., Krcod, S., Theodoridise, E., Pfistererf, D., (2014), SmartSantander: IoT experimentation over a smart city testbed, *Computer Networks* 61(14): 217–238.
- [66] Jiang, L., Xu, L. D., Cai, H., Jiang, Z., (2014), An IoT-Oriented Data Storage Framework in Cloud Computing Platform, *IEEE Transactions on Industrial Informatics* 10(2): 1443 – 1451.
- [67] Ghose, A., Biswas, P., Bhaumik, C., Sharma, M., (2012), Road condition monitoring and alert application: Using in-vehicle Smartphone as Internet-connected sensor, *In Proceedings of Pervasive Computing and Communications Workshops (PERCOM Workshops)*, 489 – 491.
- [68] Doukas, C. Maglogiannis, I., (2012), Bringing IoT and Cloud Computing towards Pervasive Healthcare, *In Proceedings of Sixth International Conference on Innovative Mobile and Internet Services in Ubiquitous Computing (IMIS)*, 922 – 926.
- [69] Papadopoulos, G. Z., Beaudaux, J., Gallais, A., No’el, T., Schreiner, G., (2013), Adding value to WSN simulation using the IoT-LAB experimental platform, *In Proceedings of IEEE 9th International Conference on Wireless and Mobile Computing, Networking and Communications (WiMob)*, 485–490.
- [70] Jina, J., Gubbib, J., Marusicb, S., Palaniswamib, M., (2014), An Information Framework of Creating a Smart City through Internet of Things, *IEEE Internet of Things Journal* 1(2):112–121.
- [71] Istepanian, R.S.H., Hu, S., Philip, N.Y., Sungoor, A., (2011), The potential of Internet of m-health Things “m-IoT” for non-invasive glucose level sensing, *In Proceedings of IEEE Engineering in Medicine and Biology Society, EMBC*, 5264 – 5266.
- [72] Bo, Y., Wang, H., (2011), The Application of Cloud Computing and the Internet of Things in Agriculture and

- Forestry, *In Proceedings of International Joint Conference on Service Sciences (IJCSS)*, 168 – 172.
- [73] Kouche, A. E., (2012), Towards a wireless sensor network platform for the Internet of Things: Sprouts WSN platform, *In Proceedings of IEEE International Conference on Communications (ICC)*, 632 – 636.
- [74] Pereira, P. P., Eliasson, J., Kyusakov, R., Delsing, J., (2013), Enabling Cloud Connectivity for Mobile Internet of Things Applications, *In Proceedings IEEE 7th International Symposium on Service Oriented System Engineering (SOSE)*, 518 – 526.
- [75] Leu, J. S., Chen, C. F., Hsu, K. C., (2013), Improving Heterogeneous SOA-Based IoT Message Stability by Shortest Processing Time Scheduling, *IEEE Transactions on Services Computing* 7(4): 575 – 585.
- [76] He, W., Yan, G., Xu, L. D., (2014), Developing Vehicular Data Cloud Services in the IoT Environment, *IEEE Transactions on Industrial Informatics* 10(2): 1587 – 1595.
- [77] Sung, W. T., Chiang, Y. C., (2012), Improved Particle Swarm Optimization Algorithm for Android Medical Care IOT using Modified Parameters, *Journal Medical System* 36(6) 3755 – 3763.
- [78] Sivabalan, A., Rajan, M. A., Balamuralidhar, P., (2013), Towards a LightWeight Internet of Things Platform Architecture, *Journal of ICT Standardization*, (1) 241–252.
- [79] Mazhelis, O., Tyrvaïnen, P., (2014), A framework for evaluating Internet-of-Things platforms: Application provider viewpoint, *In Proceedings of IEEE World Forum on Internet of Things (WF-IoT)*, 147 – 152.
- [80] Yu, L., Lu, Y., Zhu, X. J., (2012), Smart Hospital based on Internet of Things, *Journal of Networks*, 7(10) 1654–1661.
- [81] López-de-Ipiña, D., Vazquez J. I., Abaitua, J., (2007), A Web 2.0 Platform to Enable Context-Aware Mobile Mash-Ups, *Ambient Intelligence Lecture Notes in Computer Science* 4794: 266 – 286.
- [82] Sun, Z., Li, W., Song, W., Jiang, P., (2011), Research on Manufacturing Supply Chain Information Platform Architecture Based on Internet of Things, *Advanced Materials Research* 314–316: 2344 – 2347.
- [83] Lin, H. T., (2013), Implementing Smart Homes with Open Source Solutions, *International Journal of Smart Home* 7(4): 289 – 296.
- [84] Dayu, S., Huaiyu, X., Ruidan, S., Zhiqiang, Y., (2010), A GEO-Related IOT Applications Platform Based on Google Map, *In Proceedings of IEEE 7th International Conference on e-Business Engineering (ICEBE)*, 380 – 384.
- [85] Zhang, J., Anwen, Q., (2010), The application of internet of Things (IOT) in emergency management system in China, *In Proceedings of IEEE International Conference on Technologies for Homeland Security (HST)*, 139 – 142.
- [86] Elmangoush, A., Coskun, H., Wahle, S., Magedanz, T., (2013), Design aspects for a reference M2M communication platform for Smart Cities, *In Proceedings of International Conference on Innovations in Information Technology*, 204 – 209.
- [87] Chen, Y. S., Chen, Y. R., (2012), Help Working with Abstracts Context-Oriented Data Acquisition and Integration Platform for Internet of Things, *In Proceedings of Conference on Technologies and Applications of Artificial Intelligence*, 103 – 108.
- [88] Mosser, S., Fleurey, F., Morin, B., Chauvel, F., (2012), SENSAPP as a Reference Platform to Support Cloud Experiments: From the Internet of Things to the Internet of Services, *14th International Symposium on Symbolic and Numeric Algorithms for Scientific Computing (SYNASC)*, 400 – 406.
- [89] Janggwan, I., Seonghoon K., Daeyoung K., (2013). IoT Mashup as a Service: Cloud-Based Mashup Service for the Internet of Things, *In Proceedings of IEEE International Conference on Services Computing (SCC)*, 462 – 469.
- [90] Blackstock, M., Lea, R., (2014), IoT interoperability: A hub-based approach, *In Proceedings of International Conference on the Internet of Things (IOT)*, 79 – 84.
- [91] Fei L., Voegler, M., Claessens, M., Dustdar, S., (2013), Efficient and Scalable IoT Service Delivery on Cloud, *In Proceedings of IEEE Sixth International Conference on Cloud Computing (CLOUD)*, 740 – 747.
- [92] Kos, A., Sedlar, U., Sterle, J., Volk, M., (2013), Network monitoring applications based on IoT system, *In Proceedings of 18th European Conference on and Optical Cabling and Infrastructure (OC&I) Network and Optical Communications (NOC)*, 69 – 74.
- [93] Enji S., Zhanga, X., Lib, Z., (2012), The internet of things (IOT) and cloud computing (CC) based tailings dam monitoring and pre-alarm system in mines, *Safety Science* 50(4): 811–815.
- [94] Gaziz, V., Sasloglou, K., Frangiadakis, N., Kikiras, P., (2013), Architectural Blueprints of a Unified Sensing Platform for the Internet of Things, *In Proceedings of 22nd International Conference on Computer Communications and Networks (ICCCN)*, 1 – 5.
- [95] Clayman, S., Galis, A., INOX: a managed service platform for inter-connected smart objects, *In Proceedings of the workshop on Internet of Things and Service Platforms*.
- [96] Zhao, J. C., Zhang, J. F., Feng, Y., Guo, J. X., (2010) The study and application of the IOT technology in agriculture, *In Proceedings of 3rd IEEE International Conference on (Volume:2) Computer Science and Information, Technology (ICCSIT)*, 462 – 465.
- [97] Ganche, I., Ji, Z., O'Droma, M., A Generic IoT Architecture for Smart Cities, *In Proceedings of 25th IET Irish Signals & Systems Conference*, 196 – 199.
- [98] Tian, Y., Liu, Y., Yan, Z., Wu, S., (2012), RNS-A Public Resource Name Service Platform for the Internet of Things, *In Proceedings of IEEE International Conference on Green Computing and Communications (GreenCom)*, 234 – 239.
- [99] Fan, Y. J., Yin, Y. H., Xu, L. D., Zeng, Y., (2014), IoT-Based Smart Rehabilitation System, *IEEE Transactions on Industrial Informatics* 10(2): 1568 – 1577.
- [100] Li, J., Shvartzshnaider, Y., Francisco, J. A., Martin, R. P., Raychaudhuri, D., (2012), Enabling Internet-of-Things Services in the Mobility First Future Internet Architecture, *In Proceedings of IEEE International Symposium on a World of Wireless, Mobile and Multimedia Networks (WoWMoM)*.
- [101] Foteinos, V., Kelaidonis, D., Poullos, G., Stavroulaki, V., Vlacheas, P., Demestichas, P., Giaffreda, R., Biswas, A. R., Menoret, S., Nguengang, G., Etelaper, M., Cosmin, N. S., Roelands, M., Visintainer, Moessner, K., (2013), A Cognitive Management Framework for Empowering the Internet of Things, *The Future Internet Lecture Notes in Computer Science* 7858: 187–199.
- [102] Perera, C., Jayaraman, P. P., Zaslavsky, A., Georgakopoulos, D., (2014), Sensor discovery and configuration framework for the Internet of Things paradigm, *In Proceedings of IEEE World Forum on Internet of Things (WF-IoT)*, 94 – 99.
- [103] Fei L., Vogler, M., Claessens, M., Dustdar, S., (2013), Towards Automated IoT Application Deployment by a Cloud-Based Approach, *In Proceedings of IEEE 6th*

- International Service-Oriented Computing and Applications (SOCA)*, 61–68.
- [104] Tang, T., Wu, Z., Karhu, K., Hämäläinen, M., Ji, Y., (2010), An internationally distributed ubiquitous living lab innovation platform for digital ecosystem research, *In Proceedings of International Conference on Management of Emergent Digital EcoSystems*, 159–165.
- [105] Bonomi, F., Milito, R., Natarajan, P., Zhu, J., (2014), Fog Computing: A Platform for Internet of Things and Analytics, *Big Data and Internet of Things: A Roadmap for Smart Environments Studies in Computational Intelligence* 546: 169–186.
- [106] Ma, D., Ding, Q., Li, Z., Li, D., Wei, Y., (2012), Prototype of an Aquacultural Information System Based on Internet of Things E-Nose, *Intelligent Automation & Soft Computing* 18(5): 569–579.
- [107] Shang, X., Zhang, R., Chen, Y., (2012), Internet of Things (IoT) Service Architecture and its Application in E-Commerce, *Journal of Electronic Commerce in Organizations (JECO)* 10(3): 44–55.
- [108] Pires, P.F., Cavalcante, E., Barros, T., Delicato, F.C., (2014), A Platform for Integrating Physical Devices in the Internet of Things, *In Proceedings of 12th IEEE International Conference on Embedded and Ubiquitous Computing (EUC)*, 234–241.
- [109] Girau, R., Nitti, M., Atzori, L., (2013), Implementation of an Experimental Platform for the Social Internet of Things, *In Proceedings of Seventh International Conference on Innovative Mobile and Internet Services in Ubiquitous Computing (IMIS)*, 500–505.
- [110] Li, J., Zhang, Y., Chen, Y. F., Nagaraja, K., (2013), A Mobile Phone Based WSN Infrastructure for IoT over Future Internet Architecture, *In Proceedings of IEEE International Conference on and IEEE Cyber, Physical and Social Green Computing and Communications (GreenCom)*, 426–433.
- [111] Kim, J., Lee, J. W., (2014), OpenIoT: An open service framework for the Internet of Things, *In Proceedings of IEEE World Forum on Internet of Things (WF-IoT)*, 89–93.
- [112] Atzori, L., Iera, A., Morabito, G., (2011), SIoT: Giving a Social Structure to the Internet of Things, *IEEE Communications Letters* 15(11): 1193–1195.
- [113] Sowe, S.K., Kimata, T., Mianxiong Dong, Zetsu, K., (2014), Managing Heterogeneous Sensor Data on a Big Data Platform: IoT Services for Data-intensive Science, *In Proceedings of IEEE 38th International Computer Software and Applications Conference Workshops (COMPSACW)*, 295–300.
- [114] Guoa, Z., Zhanga, Z., Lib, W., (2012), Establishment of Intelligent Identification Management Platform in Railway Logistics System by Means of the Internet of Things, *In Proceedings of International Workshop on Information and Electronics Engineering (IWIEE)*, 726–730.
- [115] Guo, Y., Liu, H., Chai, Y., (2014), The Embedding Convergence of Smart Cities And Tourism Internet Of Things In China: An Advance Perspective, *Advances in Hospitality and Tourism Research (AHTR)* 2(1): 54–69.
- [116] Lin, F.J., Ren, Y., Cerritos, E., (2013), A Feasibility Study on Developing IoT/M2M Applications over ETSI M2M Architecture, *In Proceedings of International Conference on Parallel and Distributed Systems (ICPADS)*, 558–563.
- [117] Wang, M., Fan, C., Wen, Z., Li, S., (2011), Implementation of Internet of Things Oriented Data Sharing Platform Based on RESTful Web Service, *In Proceedings of 7th International Conference on Wireless Communications, Networking and Mobile Computing (WiCOM)*, 1–4.
- [118] Jiang, W., Meng, L., (2012), Design of Real Time Multimedia Platform and Protocol to the Internet of Things, *In Proceedings of IEEE 11th International Conference on Trust, Security and Privacy in Computing and Communications (TrustCom)*, 1805–1810.
- [119] Zhang, J., Iannucci, B., Hennessy, M., Gopal, K., Xiao, S., Kumar, S., Pfeffer, D., Aljedia, B., Ren, Y., Griss, M., Rosenberg, S., Cao, J., Rowe, A., (2013), Sensor Data as a Service – A Federated Platform for Mobile Data-Centric Service Development and Sharing, *In Proceedings of IEEE International Services Computing (SCC)*, 446–453.
- [120] Vermesan, O., Friess, P., Guillemin, P., (2009), Internet of things strategic research roadmap, The Cluster of European Research Projects, available from [http://www.internet-of-things-research.eu/pdf/IoT\\_Cluster\\_Strategic\\_Research\\_Agenda\\_2009.pdf](http://www.internet-of-things-research.eu/pdf/IoT_Cluster_Strategic_Research_Agenda_2009.pdf).
- [121] Bandyopadhyay, D., Sen, J., Internet of things: applications and challenges in technology and standardization, *Wireless Personal Communications* 58(1): 49–69.
- [122] Wang, S., Zhang, Z., Ye, Z., Wang, X., Lin, X., Chen, S., (2013), Application of environmental Internet of Things on water quality management of urban scenic river, *International Journal of Sustainable Development & World Ecology* 20(3): 216–222.
- [123] Roman, R., Najera, P., Lopez, J., (2011), Securing the Internet of Things, *Computer* 44(9): 51–58.
- [124] Li, L., (2013), Technology designed to combat fakes in the global supply chain, *Business Horizons* 56(2): 167–177.
- [125] Ting, S. L., Ip, W. H., (2013), Combating the counterfeits with web portal technology, *Enterprise Information Systems* 9(7): 661–680.
- [126] Xu, L. D., He, W., Li, S., (2014), Internet of Things in Industries: A Survey, *IEEE Transactions on Industrial Informatics* 10(4): 2233–2243.
- [127] Open geospatial, <http://www.opengeospatial.org/standards/sensorml> [Accessed on 8 July, 2015]
- [128] Atzori, L., Iera, A., Morabito, G., Nitti, M., (2012), The Social Internet of Things (SIoT) When Social Networks meet the Internet of Things: Concept, Architecture and Network Characterization, *Computer Networks* 56(16): 3594–3608.
- [129] Islam, M. M., Hung, P. P., Hossain, A. A., Aazam, M., Morales, M. A. G., Alsaffar, A. A., Lee, S. J., Huh, E. N., (2013), A Framework of Smart Internet of Things based Cloud Computing, *Research Notes in Information Science (RNIS)* 14: 646–651.
- [130] Issarny V., Georgantas, N., Hachem, S., Zarras, A., Vassiliadis, P., Autili, M., Gerosa, M. A., Hamida, A. B., (2011), Service-Oriented Middleware for the Future Internet: State of the Art and Research Directions, *Journal of Internet Services and Applications* 2(1): 23–45.
- [131] Xu, L. D., He, W., Li, S., (2014), Internet of Things in Industries: A Survey, *IEEE Transactions on Industrial Informatics* 10(4): 2233–2243.
- [132] Kranenburg, R. V., (2008), The Internet of Things: A Critique of Ambient Technology and the All-Seeing Network of RFID, *Institute of Network Cultures*.
- [133] Ashton, K., (2009), Internet of Things, *RFID Journal*.
- [134] Xu, L., (2011), Enterprise Systems: state-of-the-art and future trends, *IEEE Transactions on Industrial Informatics* 7(4): 630–640.
- [135] Atzori, L., Iera, A., Morabito, G., (2010), The Internet of things: a survey, *Computer Networks* 54(15): 2787–2805.

- [136] Sundmaeker, H., Guillemin, P., Friess, P., Vision and challenges for realizing the Internet of Things, *European Commission*.
- [137] Xia, F., (2009), Wireless sensor technologies and applications, *Sensors* 9(11): 8824–8830.
- [138] Yaacoub, E., Kadri, A., Dayya, A. D., (2012), Cooperative wireless sensor networks for green internet of things, *In Proceedings of the 8th ACM Symposium on QoS and Security for Wireless and Mobile Networks*, 79–80.
- [139] Arsénio, A., Serra, H., Francisco, R., Nabais, F., Andrade, J., Serrano, E., (2014), Internet of Intelligent Things: bringing artificial intelligence into things and communication networks, *Studies in Computational Intelligence* 495: 1–37.
- [140] Kortuem, G., Kawsar, F., Fitton, D., Sundramoorthy, V., (2010), Smart objects as building blocks for the internet of things, *IEEE Internet Computing* 14(1): 44–51.
- [141] Rao, B. P., Saluia, P., Sharma, N., Mittal, A., Sharma, S. V., (2012), Cloud computing for Internet of Things & sensing based applications, *In Proceedings of 2012 Sixth International Conference on Sensing Technology (ICST)*, 374–380.
- [142] ITU work on Internet of things, (2015), *ICTP workshop*. [Accessed on March 26, 2015]
- [143] IoT definition, <http://www.itu.int/ITU-T/newslog/New+ITU+Standards+Define+The+Internet+Of+Things+And+Provide+The+Blueprints+For+Its+Development.aspx> [Accessed 4 July 2012]
- [144] Eleftherakis, G., Pappas, T. D., Rousis, L. K., Paunovski, O., (2015), Architecting the IoT Paradigm: A Middleware for Autonomous Distributed Sensor Networks, *International Journal of Distributed Sensor Networks* 2015: 1-17.
- [145] Vućinić, M., Tourancheau, B., Rousseau, F., Duda, A., Damon, L., Guizzetti, R., (2014), OSCAR: Object Security Architecture for the Internet of Things, arXiv:1404.7799v1
- [146] Kothmay, T., Schmitt, C., Hu, W., Brünig, M., Carle, G., (2012), A DTLS Based End-To-End Security Architecture for the Internet of Things with Two-Way Authentication, *In Proceedings of IEEE 37th Conference on Local Computer Networks Workshops (LCN Workshops)*, 956 – 963.
- [147] Ning, H., Liu, H., (2012), Cyber-Physical-Social Based Security Architecture for Future Internet of Things, *Advances in Internet of Things* 2: 1–7.
- [148] Zhang, W., Qu, B., (2013), Security Architecture of the Internet of Things Oriented to Perceptual Layer, *International Journal on Computer, Consumer and Control (IJ3C)* 2(2): 37.
- [149] Zhou, L., Chao, H. C., (2011), Multimedia Traffic Security Architecture for the Internet of Things, *IEEE Network*: 35–40.
- [150] Zhao, H. V., Lin, W. S., Liu, K. J. R., (2009), A Case Study in Multimedia Fingerprinting: Behavior Modeling and Forensics for Multimedia Social Networks, *IEEE Signal Processing Magazine* 26(1): 118–39.
- [151] Kundur D., Luh, W., Okorafor, U.N., Zourntos, T., (2008), Security and Privacy for Distributed Multimedia Sensor Networks, *Proceedings of the IEEE* 96(1): 112–130.
- [152] Zhou, L., Naixue, X., Shu, L., Vasilakos, A., Yeo, S. S., (2010), Context-Aware Multimedia Service in Heterogeneous Networks, *IEEE Intelligent Systems* PP(99): 40–47.
- [153] Morchon, O. G., Rietman, R., Sharma, S., Tolhuizen, L., Arce, J. T., (2016), A comprehensive and lightweight security architecture to secure the IoT throughout the lifecycle of a device based on HIMMO, *Algorithms for Sensor Systems, Lecture Notes in Computer Science* 9536: 112–128.
- [154] CoAP, [www.coap.technology](http://www.coap.technology)
- [155] MQTT, [www.mqtt.org](http://www.mqtt.org)
- [156] Websockets, <https://w3c.github.io/websockets/>
- [157] XMPP, [www.xmpp.org](http://www.xmpp.org)
- [158] SOAP, [www.w3.org/TR/soap](http://www.w3.org/TR/soap)
- [159] RESTful, [www.restapitutorial.com](http://www.restapitutorial.com)
- [160] IPv6, [www.ipv6forum.com](http://www.ipv6forum.com)
- [161] NoSQL, [www.nosql-database.org/](http://www.nosql-database.org/)
- [162] SPARQL, [www.w3.org/TR/rdf-sparql-query](http://www.w3.org/TR/rdf-sparql-query)
- [163] Graph database, [www.neo4j.com/developer/graph-database/](http://www.neo4j.com/developer/graph-database/)
- [164] Parallel database, [www.codex.cs.yale.edu/avi/db-book/db5/slide-dir/ch21.ppt](http://www.codex.cs.yale.edu/avi/db-book/db5/slide-dir/ch21.ppt)
- [165] Hadoop, <https://hadoop.apache.org/>
- [166] Hbase, <https://hbase.apache.org>
- [167] RDF, <https://www.w3.org/RDF>
- [168] OWL, [www.w3.org/TR/owl-semantics/](http://www.w3.org/TR/owl-semantics/).
- [169] Ray, P. P., (2016), Internet of Robotic Things, Submitted.
- [170] Ray, P. P., (2015), Towards an Internet of Things based Architectural Framework for Defence, Submitted.
- [171] Ray, P. P., (2015), Internet of Things for Smart Agriculture: Technologies, Practices and Future Road Map, Submitted.
- [172] Metro, [www.metrogroup.de](http://www.metrogroup.de)
- [173] EEML, [www.eeml.org](http://www.eeml.org)
- [174] EMMML, [https://en.wikipedia.org/wiki/Enterprise\\_Mashup\\_Markup\\_Language](https://en.wikipedia.org/wiki/Enterprise_Mashup_Markup_Language)
- [175] URI, <https://www.w3.org/Addressing>
- [176] Cooja, [www.contiki-os.org](http://www.contiki-os.org)
- [177] RPL, <https://tools.ietf.org/html/rfc6550>
- [178] Tiny OS, [www.tinyos.net](http://www.tinyos.net)
- [179] Contiki OS, [www.contiki-os.org](http://www.contiki-os.org)
- [180] Hydro, [www.cs.berkeley.edu/~stevethd/pubs/smartgrid10hydro.pdf](http://www.cs.berkeley.edu/~stevethd/pubs/smartgrid10hydro.pdf)
- [181] Bonomi, F., Milito, R., Zhu, J., Addepalli, S., (2012), Fog Computing and Its Role in the Internet of Things, *In Proceedings of MCC, Helsinki, Finland*.
- [182] Yang, B., Nie, X., Shi, H., Gan, W., (2011), M-learning mode research based on Internet of Things, *In Proceedings of International Conference on Artificial Intelligence, Management Science and Electronic Commerce (AIMSEC)*, 5623 – 5627.
- [183] Bonino, D., Alizo, M.T.D., Alapetite, A., Gilbert, T., Axling, M., Udsen, H., Soto, J.A.C., Spirito, M., (2015), ALMANAC: Internet of Things for Smart Cities Future, *International Conference on Internet of Things and Cloud (FiCloud)*, 309 – 316.
- [184] SSN, [www.w3.org/2005/Incubator/ssn/ssnx/ssn](http://www.w3.org/2005/Incubator/ssn/ssnx/ssn)
- [185] Narendra, N., Ponnalagu, K., Ghose, A., Tamilselvam, S., (2015), Goal-Driven Context-Aware Data Filtering in IoT – Based Systems, *IEEE 18th International Conference on Intelligent Transportation Systems (ITSC)*, 2172 – 217.